



Delta Improvement Package

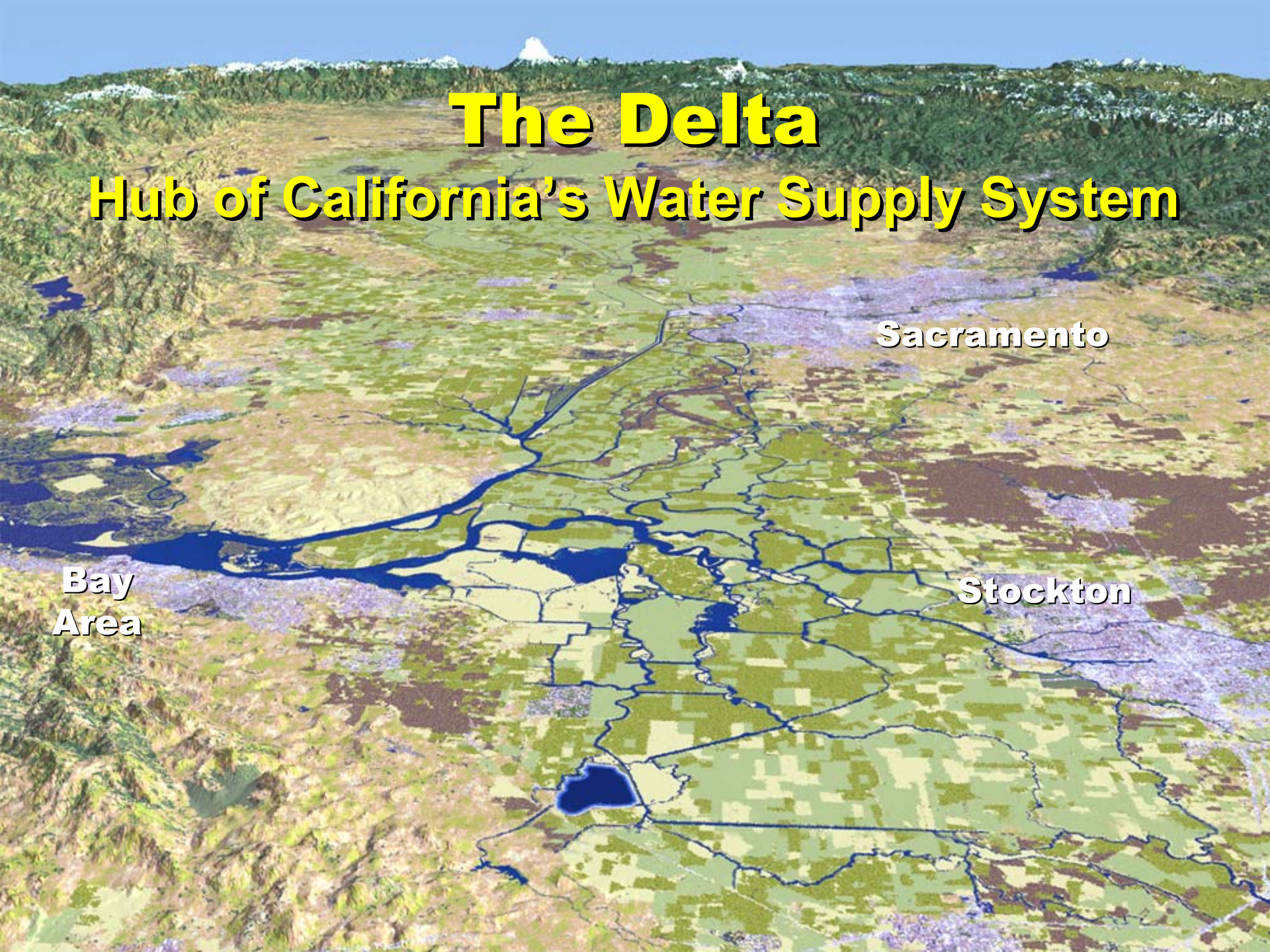
A 2004 CALFED Priority

- Overview
- How actions fit into MWD strategies
- Benefits
- Next steps - Call to action

January 2004

The Delta

Hub of California's Water Supply System



Sacramento

**Bay
Area**

Stockton

Historical Context

February 27, 1991
The Sacramento Bee
San Francisco To Cut Allotments

Los Angeles Times

FEBRUARY 28, 1991

**AVOCADO GROWERS SLASH GROVES BY
ONE THIRD TO SAVE THIRSTY TREES**

Los Angeles Times

FEBRUARY 28, 1991

**KERN COUNTY FARMERS SHORT OF WATER, TIME
DROUGHT: MANY ARE LEFT WITHOUT THEIR MAJOR SUPPLIER AFTER**

SAN FRANCISCO
The Examiner.

Smelt overstay welcome in Delta's water system
Endangered fish's presence puts pumps at a standstill
as Silicon Valley others grow restive

fresnoBee.com

**NEAR SMELTDOWN: A LITTLE
FISH CAUSES A BIG WATER
CRISIS IN THE DELTA.**

June 26, 1999

■ Before CALFED

- Stakeholders deadlocked
- Unreliable Bay-Delta supply
- Declining fish species & water quality

■ Today

- Consensus-based approach
- Balanced progress
- Delta water is more reliable
- Rebounding fish populations
- Grounded in sound science & public involvement

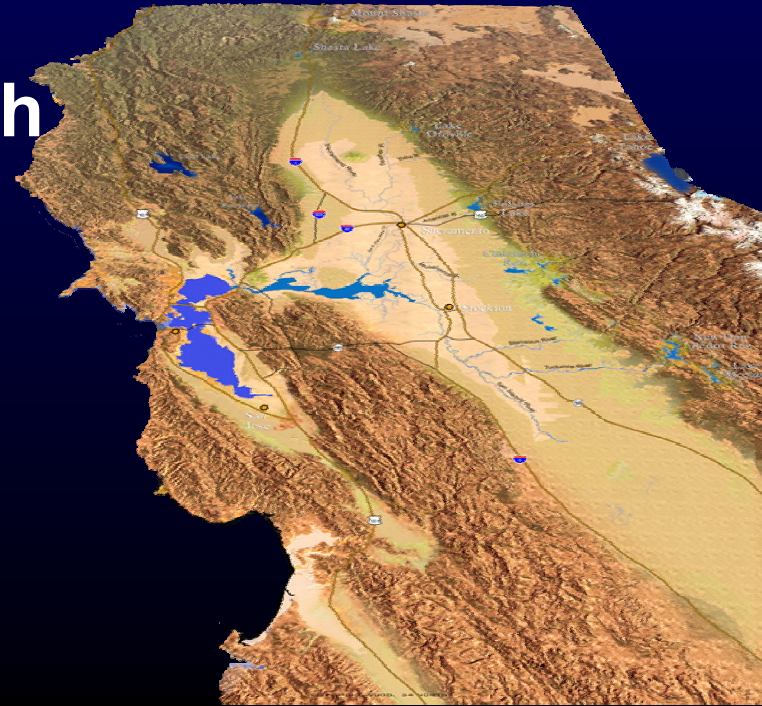
CALFED Accomplishments

Years 1-3

- **Increased emphasis on local & regional programs**
- **Invested \$2 billion over hundreds of projects**
- **Established California Bay Delta Authority**
- **Established science program to guide actions**
- **Increased coordination among CALFED agencies**

2004 – A Critical Year for CALFED

- First major CALFED implementation package of statewide significance
- Moves CALFED from planning to implementation
- Promotes balanced approach
 - Water supply reliability
 - Ecosystem restoration
 - Water quality
 - In-Delta protections



Proposed 2004 CALFED Implementation Package

Water Supply Reliability Improvements

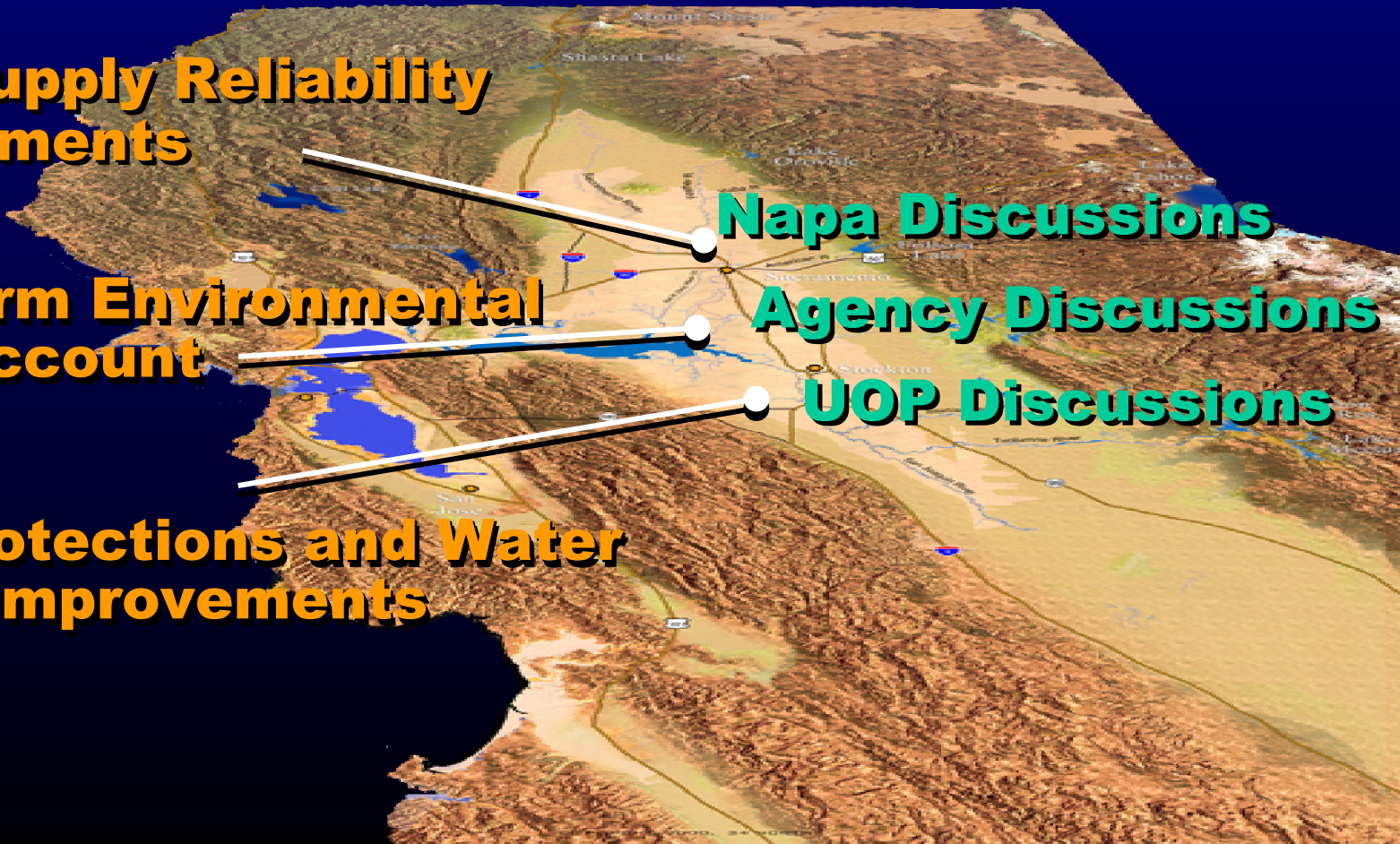
Long-Term Environmental Water Account

Delta Protections and Water Quality Improvements

Napa Discussions

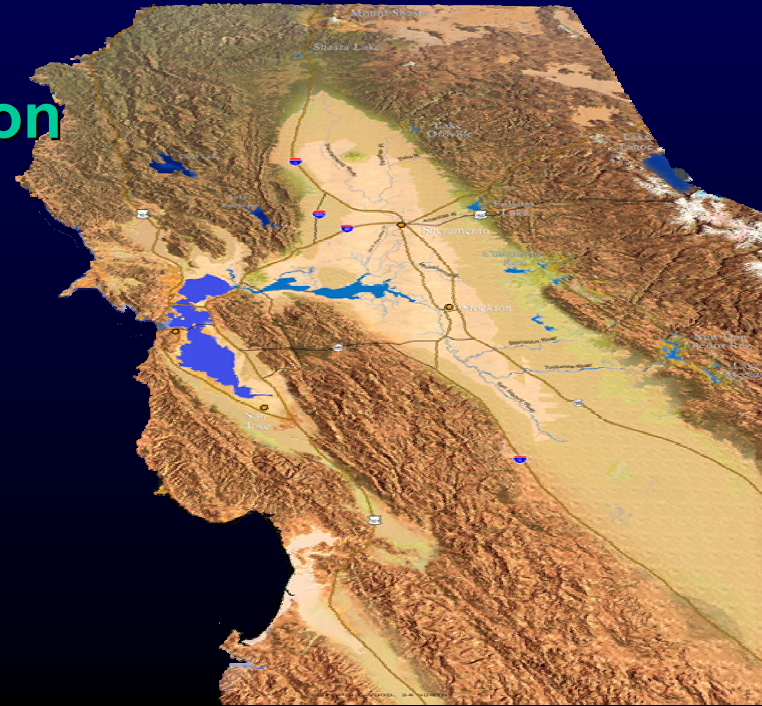
Agency Discussions

UOP Discussions

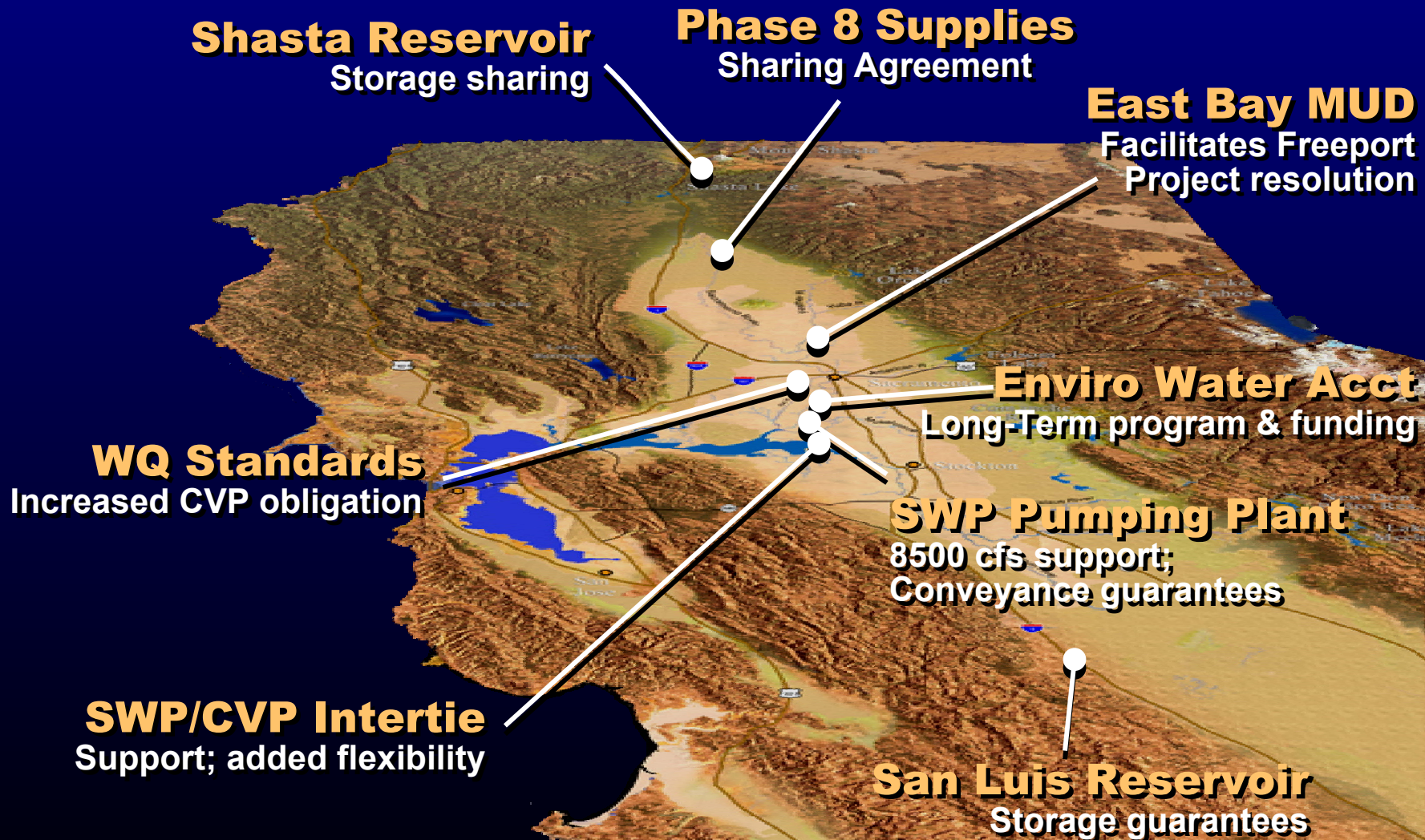


Water Supply Improvements

- Actions in the CALFED ROD to improve water supply
 - Increase SWP pumping to 8,500 cfs
 - Construct CVP/SWP Intertie
 - Implement CVP/SWP Integration Plan (Napa Proposal)



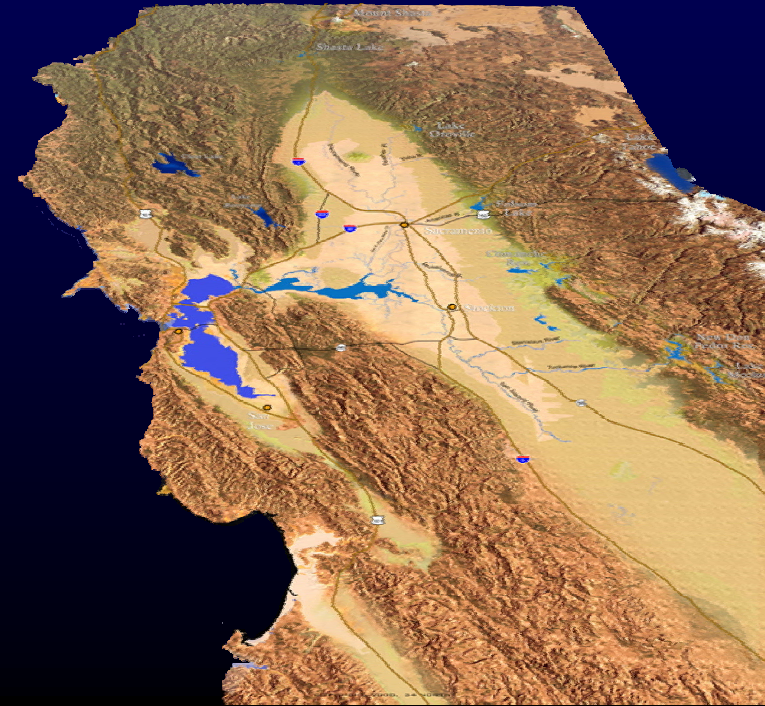
Water Supply Improvements



Ecosystem Restoration

Environmental Water Account

- Successful 4-year pilot program expires in 2004
- Committed to long-term program
- Key elements
 - 210,000-250,000 acre-feet
 - Sustainable funding
- Significant step forward in resolving conflict



Water Quality Improvements and Delta Protections

■ Actions seek to improve water quality for in-Delta water users

- Reduce agricultural drainage
- Install operable barriers
- Address Stockton's dissolved oxygen issue
- Improve flows & water quality in San Joaquin river
- Improve Franks Tract





Delta Improvement Package

A 2004 CALFED Priority

- Overview
- How actions fit into MWD strategies
- Benefits
- Next steps - Call to action

January 2004

Managing Uncertainties



Water Quality



Endangered Species



Population

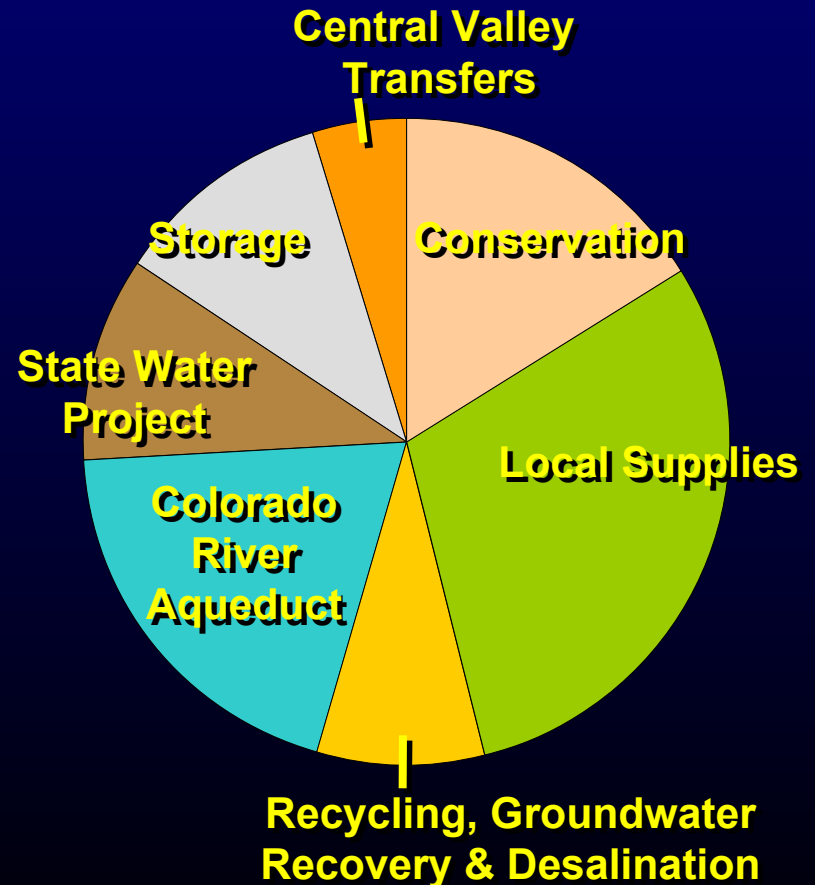


Climate Change

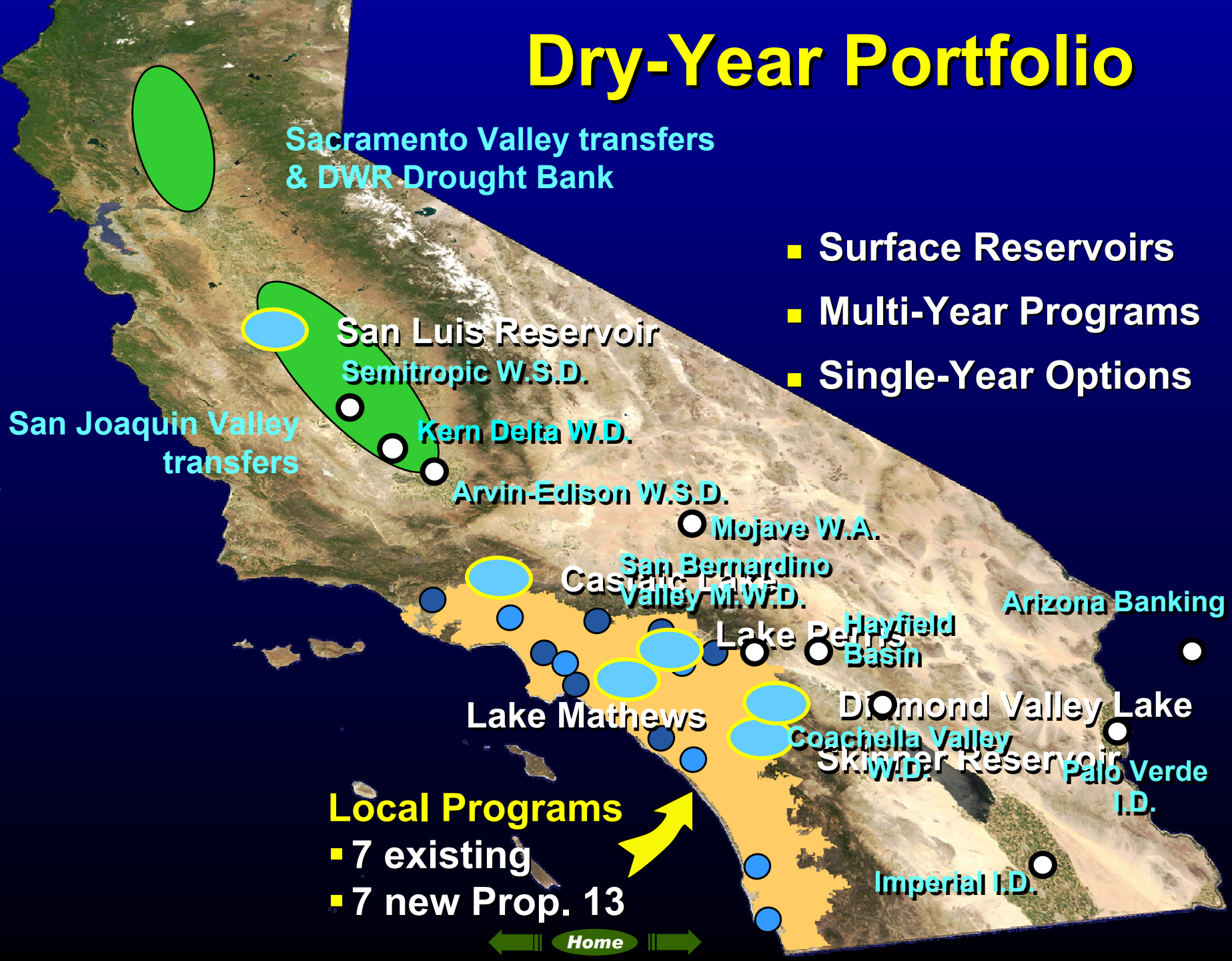
Integrated Resources Plan

- 20-year water resource plan for Southern Cal
- Ensures
 - Diversity, adaptability
- Recognizes constraints
 - Environmental, political, institutional
- Emphasizes
 - Reliability, affordability, water quality

2020 IRP Goals

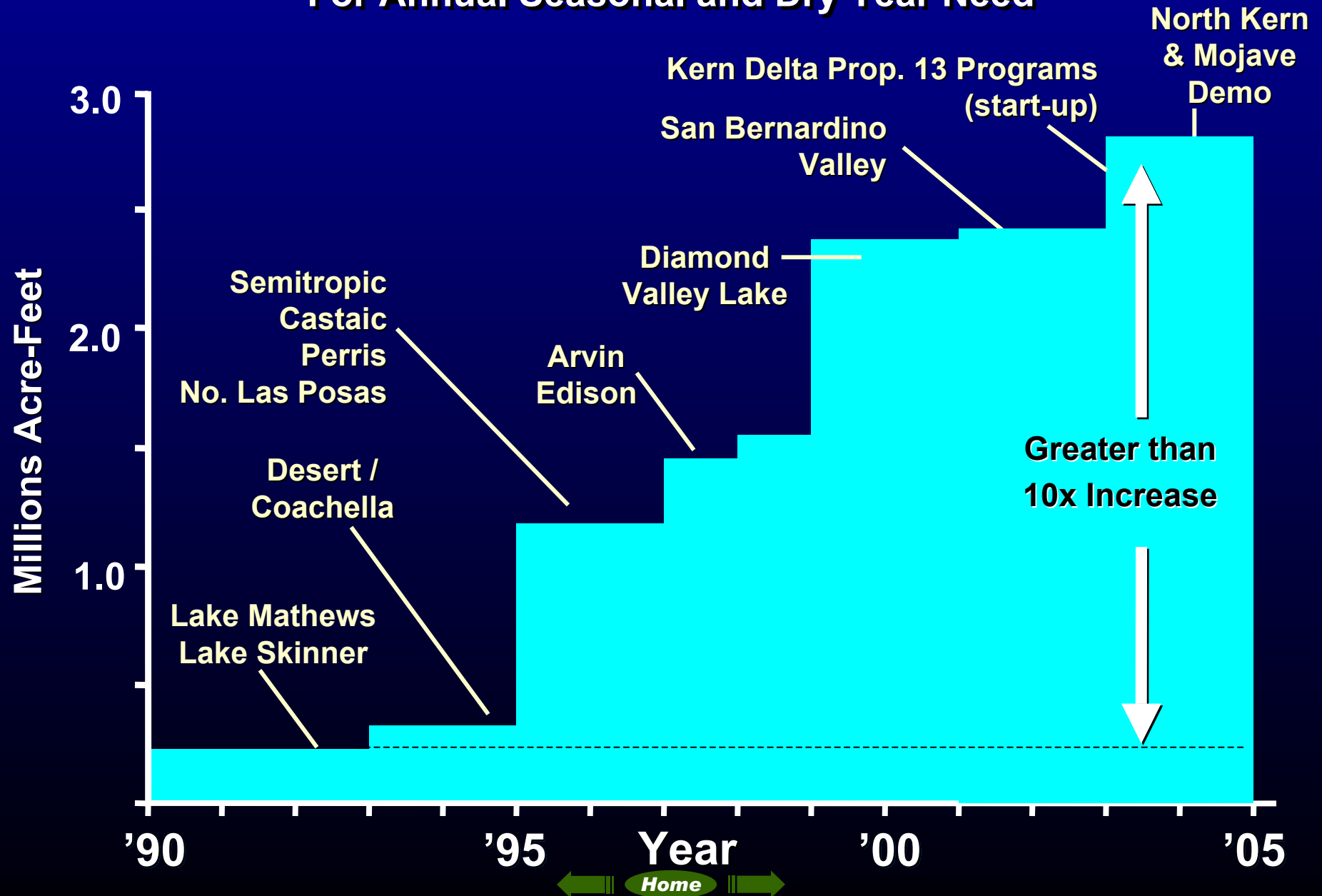


Dry-Year Portfolio



Metropolitan's Storage Capacity

For Annual Seasonal and Dry Year Need





Delta Improvement Package

A 2004 CALFED Priority

- Overview
- How actions fit into MWD strategies
- Benefits
- Next steps - Call to action

January 2004

Wet-Period Banking

Reduces environmental risk &
manages uncertainty



Wet-Period
Water

SWP
Pumping Plant &
Delta Conveyance





Potential
Transfers

SWP
Pumping Plant &
Delta Conveyance

**Improved Conveyance for
Voluntary Water Transfers**



Lake Shasta

**Increased efficiency of Banks
Pumping Plant capacity
=
Augments beneficial
Sacramento River flows**

**Improved Conveyance for
Voluntary Water Transfers**

Protecting Delta Interests and Enhancing Water Quality



University of the Pacific



San Joaquin River Water Quality Standards

Sacramento

- Existing WQ stations
- Proposed new WQ stations

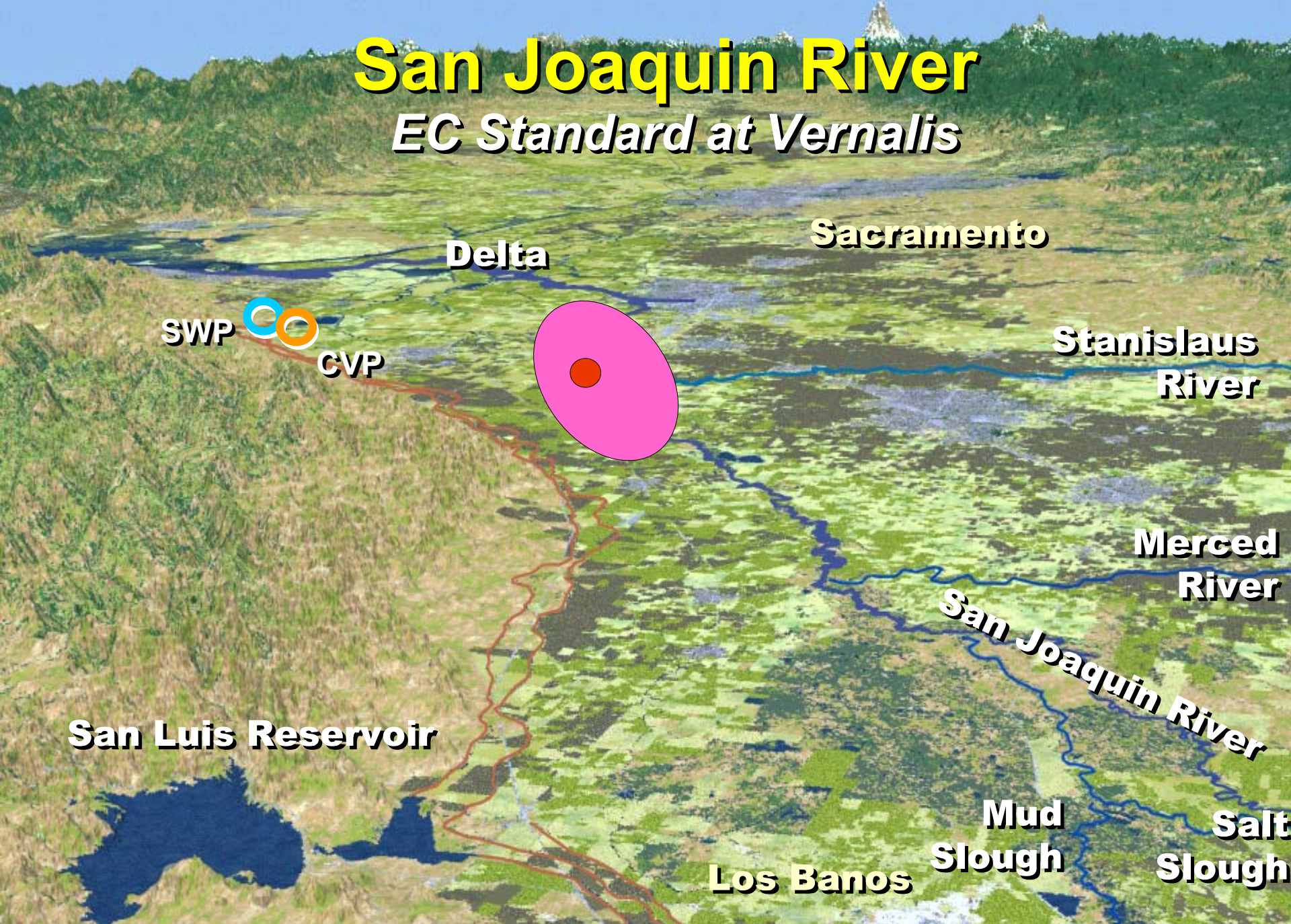
SWP

CVP

Home

San Joaquin River

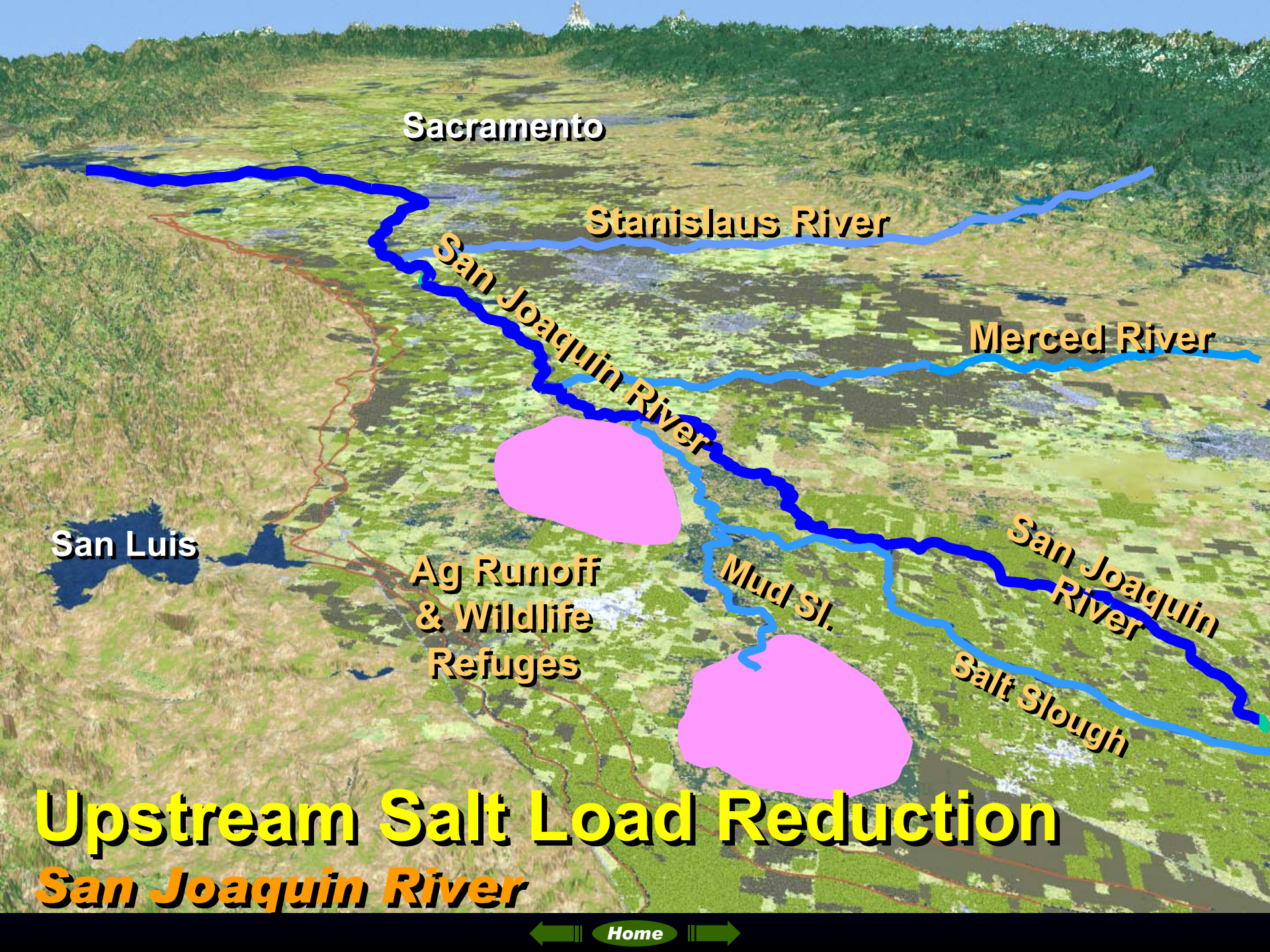
EC Standard at Vernalis



Recirculation Concept

CVP to San Joaquin River





Sacramento

Stanislaus River

Merced River

San Joaquin River

San Luis

**Ag Runoff
& Wildlife
Refuges**

Mud Sl.

**San Joaquin
River**

Salt Slough

Upstream Salt Load Reduction

San Joaquin River

An aerial photograph of the New Melones Reservoir, showing a large concrete dam across a deep valley. The reservoir is filled with blue water, and the surrounding hills are covered in green and brown vegetation. A small yellow structure is visible on the left hillside.

New Melones Reservoir

Voluntary Water Purchases
to reduce demands on New Melones

South Delta Water Quality Standards

Sacramento

- Existing WQ stations
- Proposed new WQ stations

SWP

CVP

Home

South Delta Improvements

Operational
Guarantees

Banks 8,500 cfs

SWP



South Delta Improvements



Grant Line



Middle River



Head of Old River



Old River @ Tracy

SWP 
CVP 

South Delta Improvements

Channel Dredging



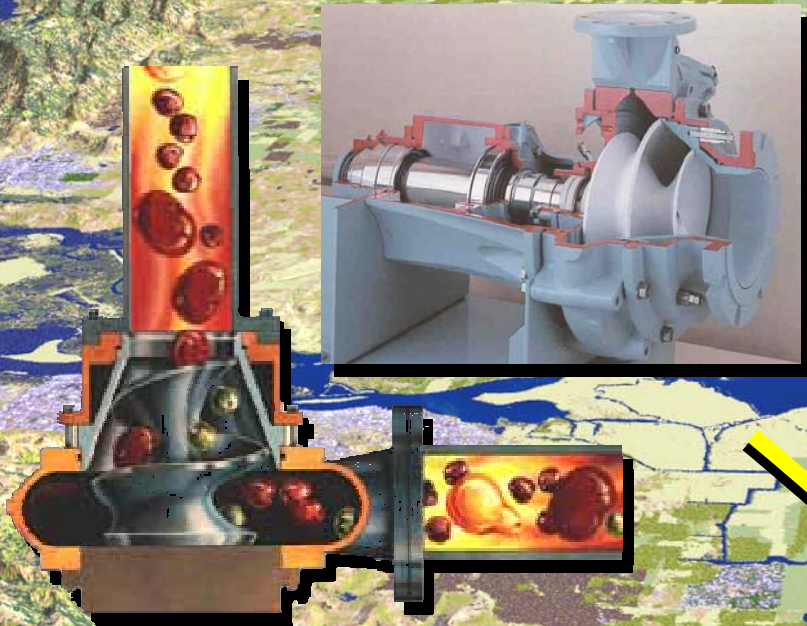
**Ag Diversion
Extensions**



**Diversion
Dredge Site**

Channel Dredging

Low Head, Fish Friendly Pumps



Old River near Tracy

Middle River

Central Delta Improvements

Sacramento

- Existing WQ stations
- Proposed new WQ stations

SWP

CVP

Central Delta Improvements

Franks Tract

**Veale & Byron Tract
drain relocations**

New stations

Sac

Low Dissolved Oxygen
Impedes Fish Migration
Measurements <5.0 mg/l

**New Water Quality
Monitoring Stations**

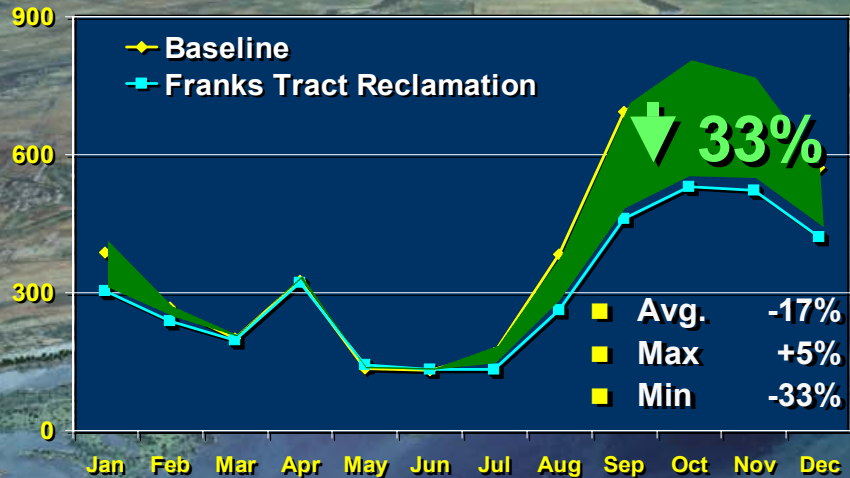
**CCWD Intake
Protections**

Discovery Bay

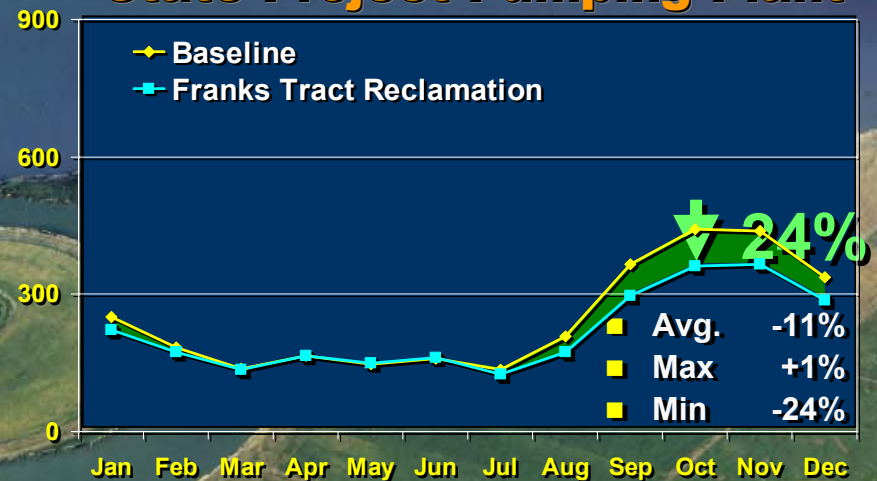
Franks Tract

**Salinity
Intrusion**

Contra Costa Intake Old River at Rock Slough



State Project Pumping Plant



Water Quality Benefits at Urban Intakes
Bromide Reduction (µg/L)

Ecosystem Restoration Program

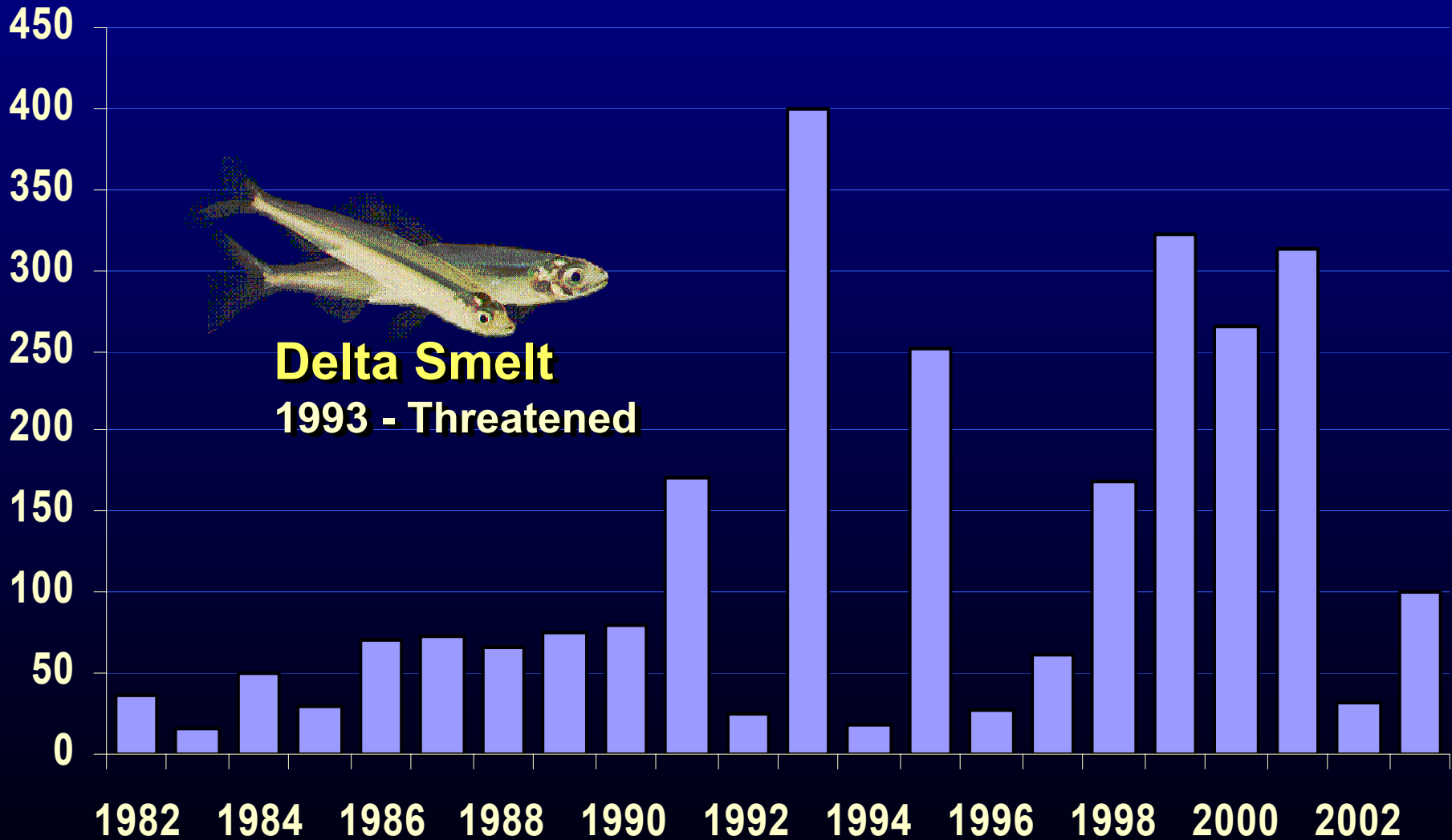
A Groundbreaking Approach To Ecosystem Enhancement



Over 400 ecosystem projects implemented
through \$400 million in funding.

Environmental Gains

Fishery Recovery – It's Working!



Butte Creek Environmental Progress

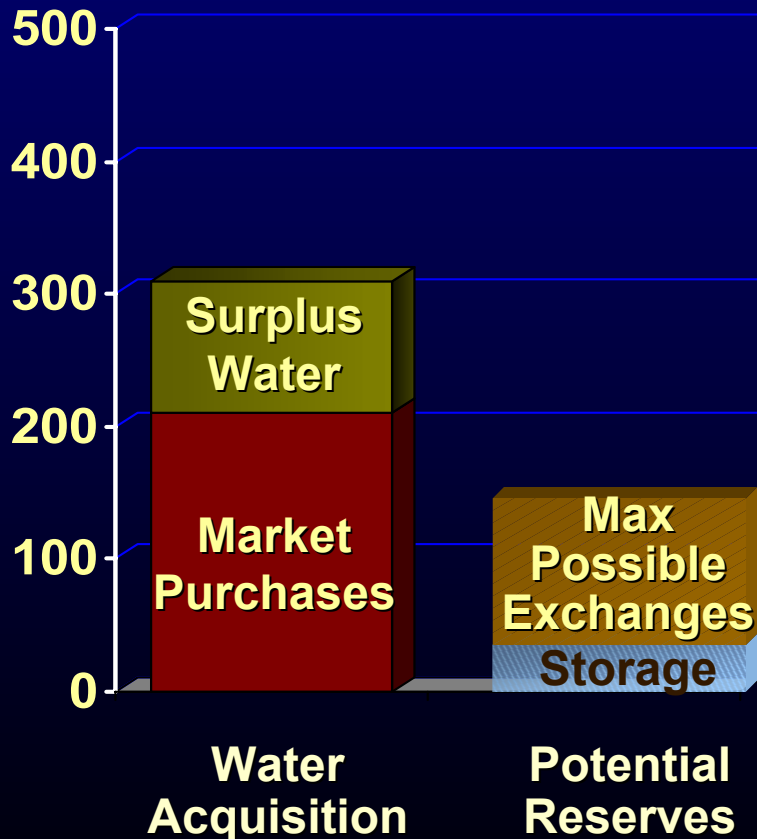
Spring Run Chinook Salmon Spawning



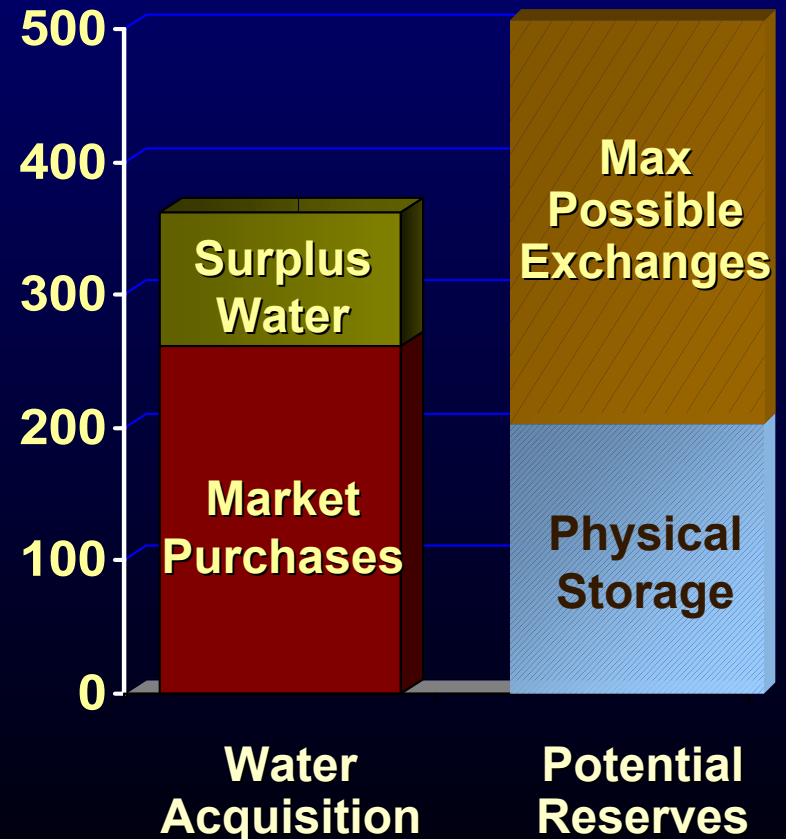
Environmental Water Account

Assets Protecting environmental interests

Actual Assets
(2000-03)



Proposed Assets
(Long-Term)



Southern California Benefits

- **More replenishment water
(93,000 – 168,000 AF/yr)**
- **Enhanced access to voluntary water transfers**
- **Meets 2020 IRP goals for SWP supplies**
- **20-30% improvement in source water quality**
- **Diversified portfolio**



Delta Improvement Package

A 2004 CALFED Priority

- Overview
- How actions fit into MWD strategies
- Benefits
- Next steps - Call to action

January 2004

Call To Action

- ***California's Water Future*** – stakeholder initiative
- **Active on several fronts**
 - Media
 - Legislative (state and federal)
 - Opinion leaders & decision makers
- **Coalition**
 - ACWA, CA Business Properties Assn, MWD, Kern County Water Agency, State Water Contractors, San Luis & Delta-Mendota Water Authority, Westlands Water District

Next Steps

- Environmental review – Early 2004
- Public review – CALFED process
- Legislation likely involved

Coalition Contacts

Steve Hall

Association of California Water Agencies
(916) 441-4545
steveh@acwanet.com

Rex Hime

California Business Properties Assn.
(916) 443-4676
rexhime@cbpa.com

Fiona Hutton

Red Gate Communications
(818) 508-1986
fhutton@redgatecommunications.com