

BAY DELTA CONSERVATION PLAN

OVERVIEW OF BDCP

MAY 22, 2013

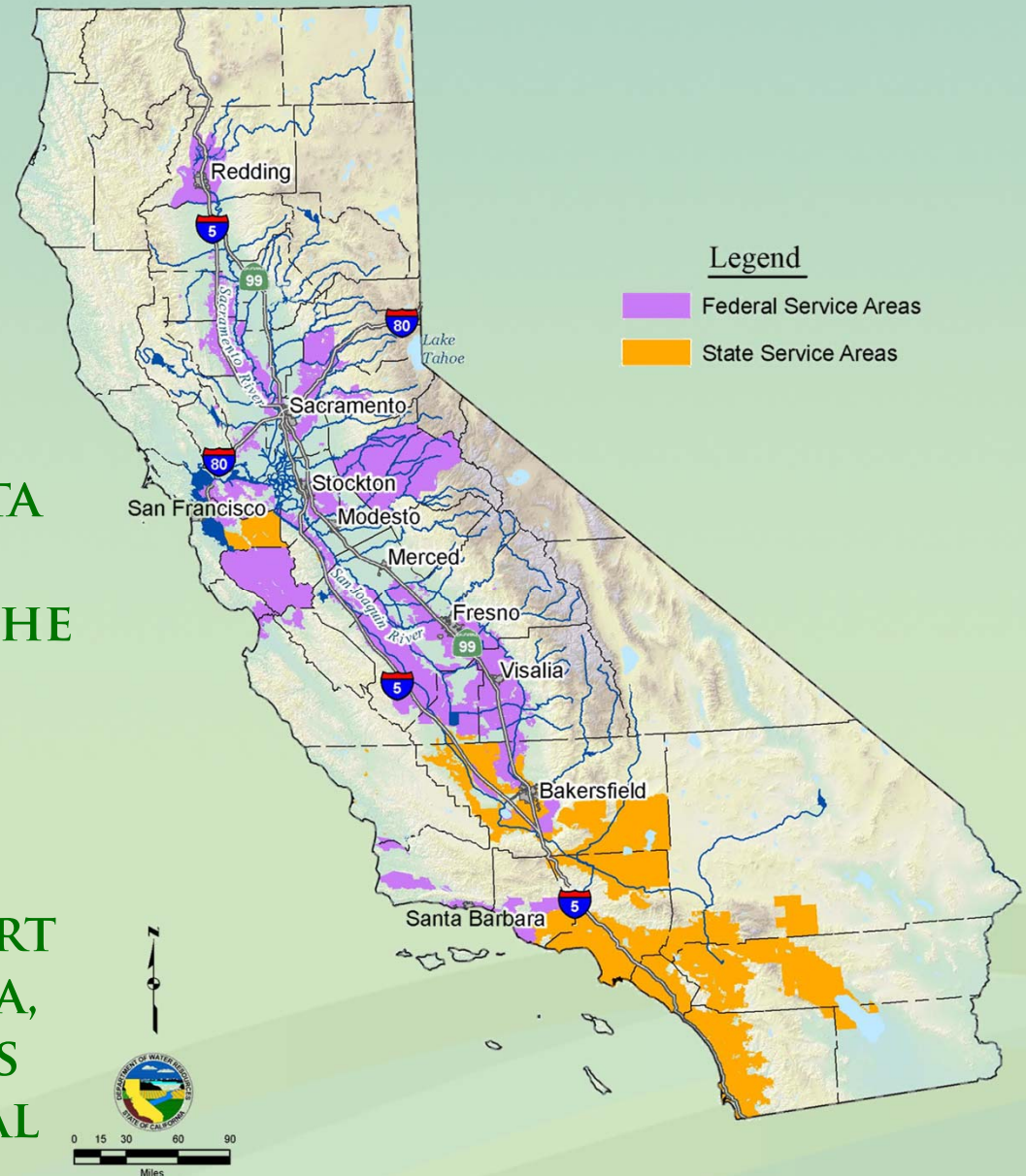
PAUL HELLIKER
DEPUTY DIRECTOR
CA DEPARTMENT OF WATER RESOURCES

WATER SUPPLIES

AREAS OF CALIFORNIA
SERVED BY WATER
SUPPLIES FROM THE
DELTA.

OVER 24 MILLION PEOPLE
DEPEND ON THE BAY-DELTA
SYSTEM FOR DRINKING
WATER (TWO-THIRDS OF THE
STATE'S POPULATION).

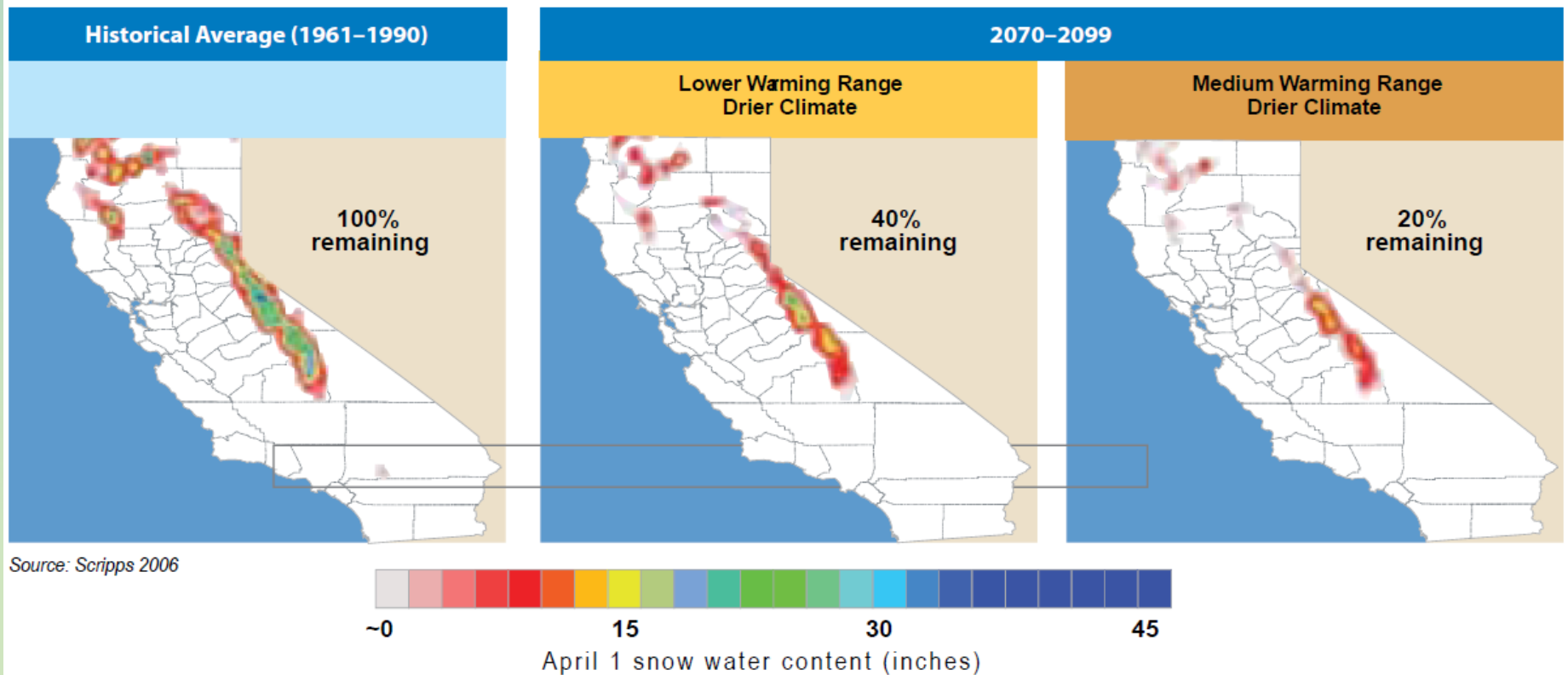
2.5 MILLION ACRES
IRRIGATED AT LEAST IN PART
BY WATER FROM THE DELTA,
SUPPORTING CALIFORNIA'S
\$27 BILLION AGRICULTURAL
INDUSTRY.



CALIFORNIA SNOWPACK PREDICTIONS

Decreasing California Snowpack

These figures show projections of how two climate scenarios may reduce Sierra snowpacks to 40% and 20% of recent historical averages



DWR, 2010

SEA WATER INTRUSION WITH LEVEE BREAKS

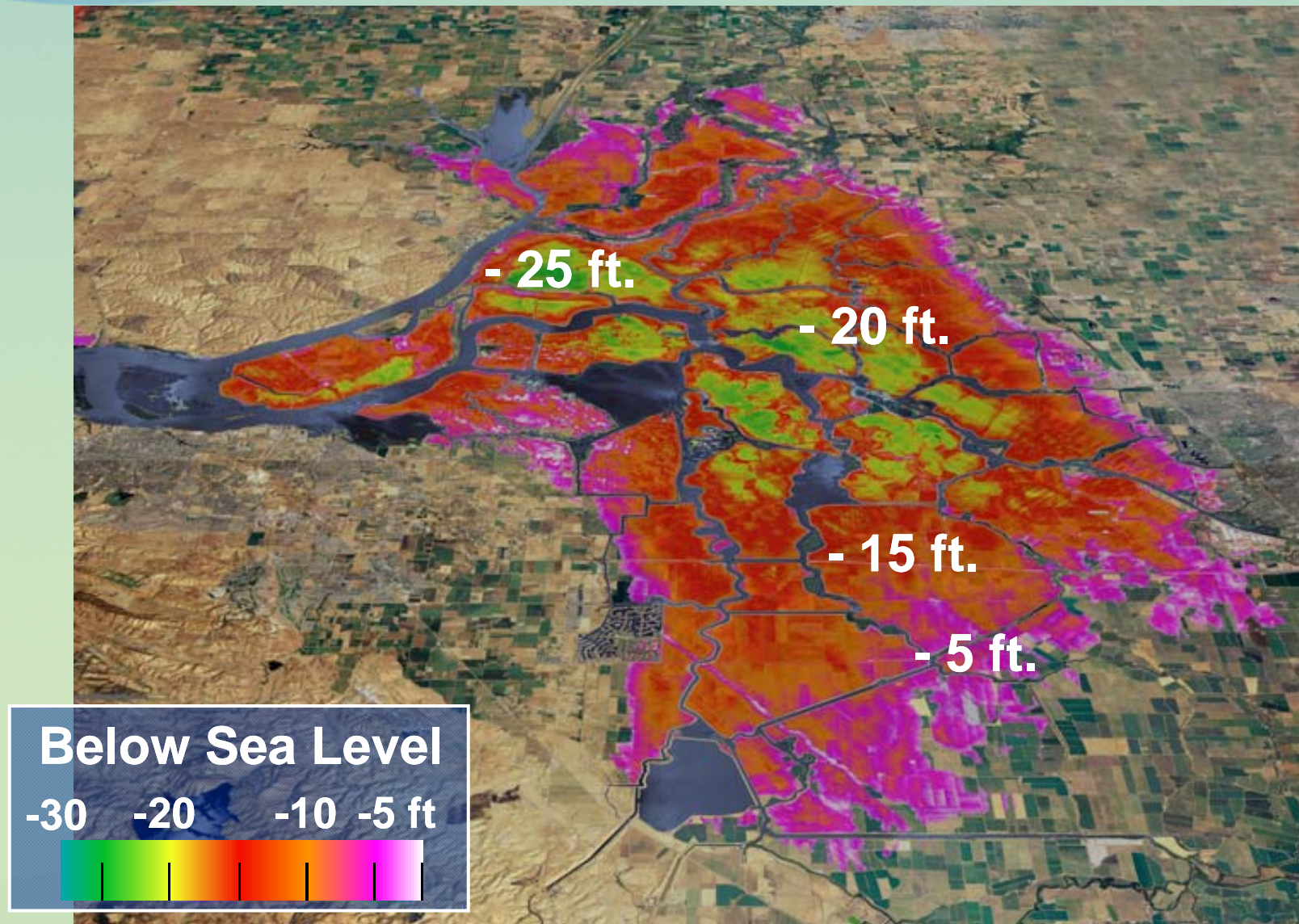
SIGNIFICANT MULTIPLE LEVEE FAILURES COULD
RESULTS IN LOSS OF WATER SUPPLY FOR 3 YEARS
OR LONGER.



*Jones Tract
Levee Breach - 2004*



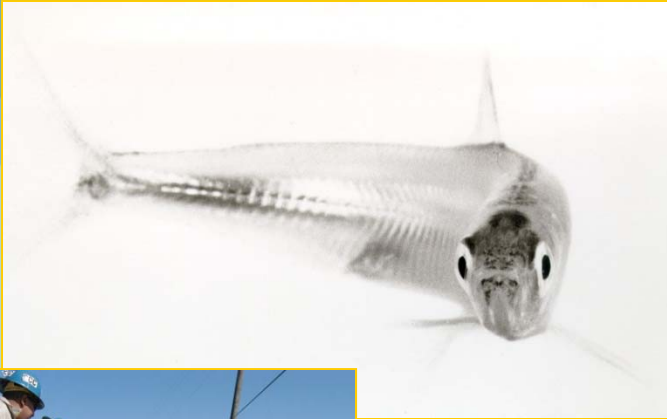
DELTA ISLANDS BELOW SEA LEVEL



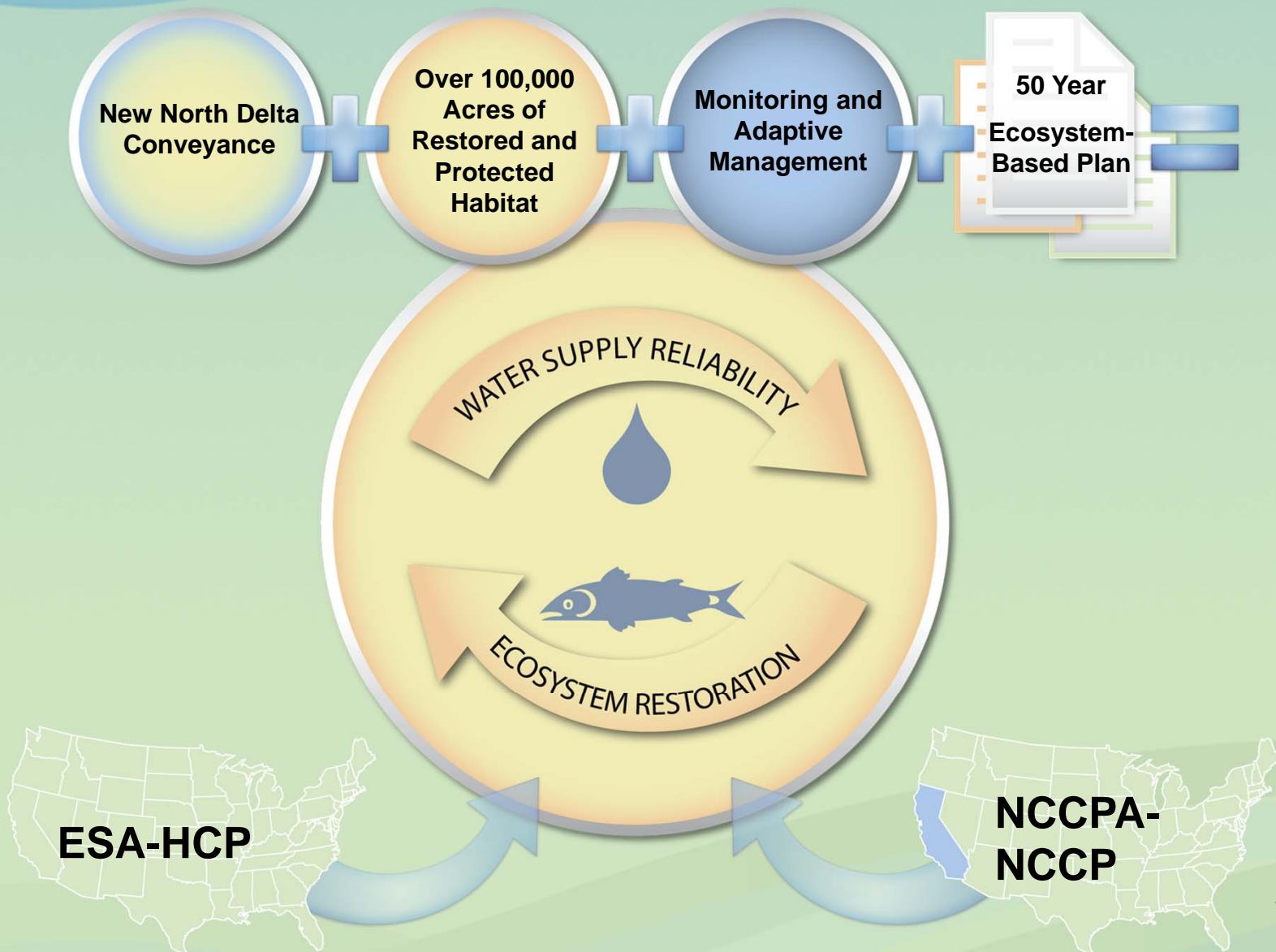
DELTA CHALLENGES

- Subsidence
- Earthquakes
- Climate Change
- Declining Species
- Regulatory Uncertainty

“64% chance of catastrophic failure due to earthquake or storm in the next 50 years.”



BAY DELTA CONSERVATION PLAN



BDCP FUNDAMENTAL COMPONENTS

- › LARGE SCALE RESTORATION

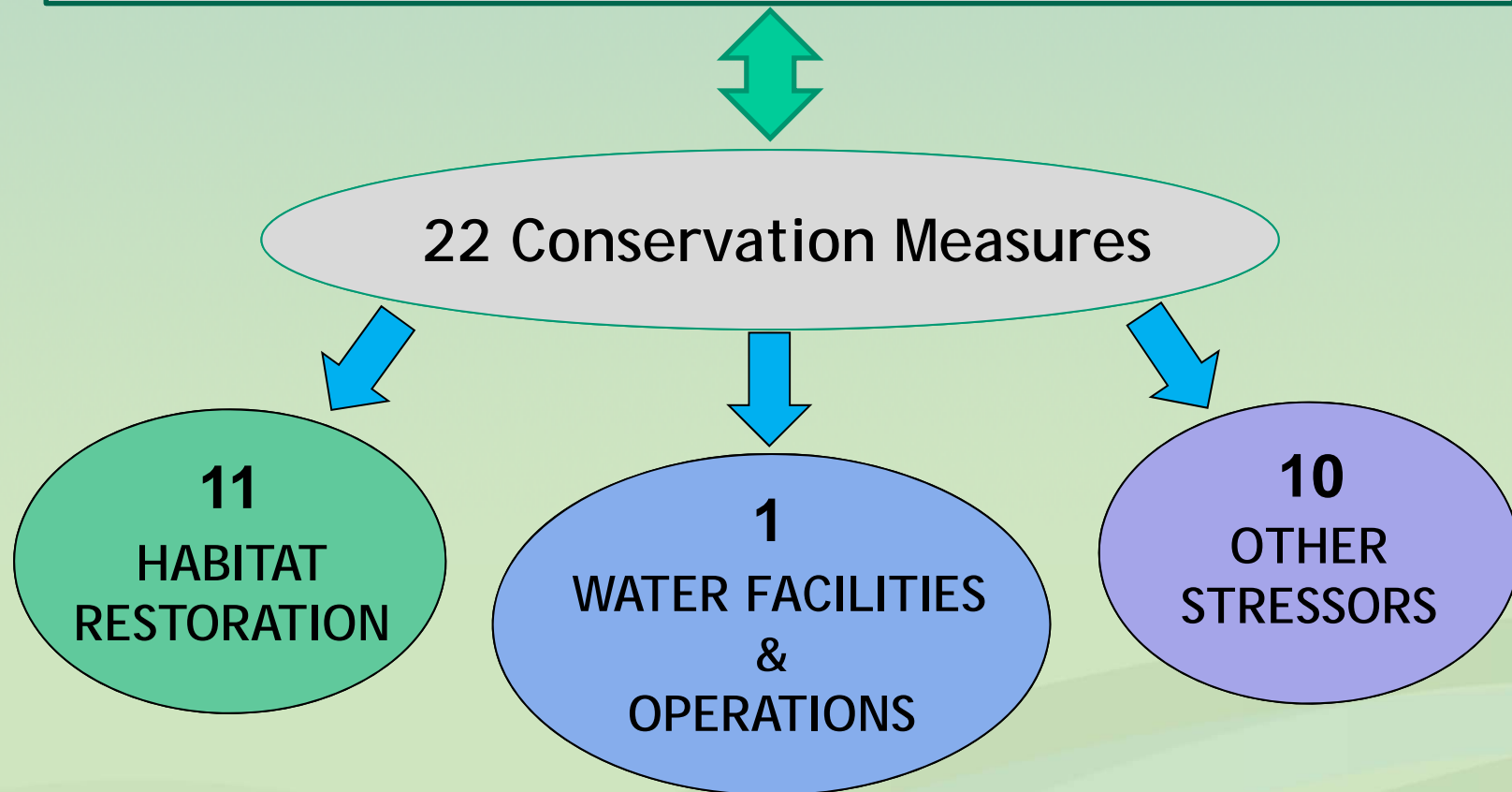


- › ALTERNATIVE CONVEYANCE



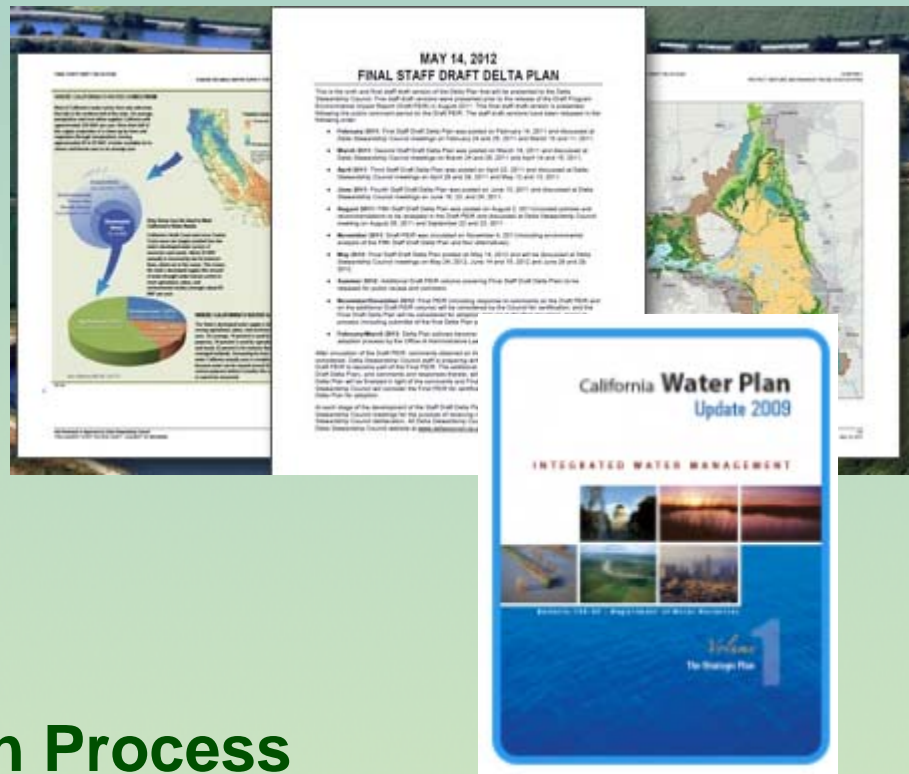
BDCP CONSERVATION STRATEGY

200 Biological Goals and Objectives for 56 species
11 of which are aquatic species



Examples of Master Plans

- California Water Plan
- Delta Plan
- Integrated Regional Water Management Plans
- Central Valley Flood Plan



BDCP is a Permit Application Process

- Delta Conveyance Solution for Water Supply Reliability for SWP/CVP
- Mitigation and Habitat Improvements
- Incidental Take Coverage under Federal and State ESAs

HISTORY OF BDCP PROCESS

- Established 2006
- Scoping meetings to seek study proposals in 2008/09
 - Tunnel options suggested
- First Administrative Draft 2012
- Second Administrative Draft now being released
- Administrative draft EIR/EIS under review by federal lead agencies and is available on the BDCP website
- 15 alternatives being evaluated
 - 3,000 cfs option IS included

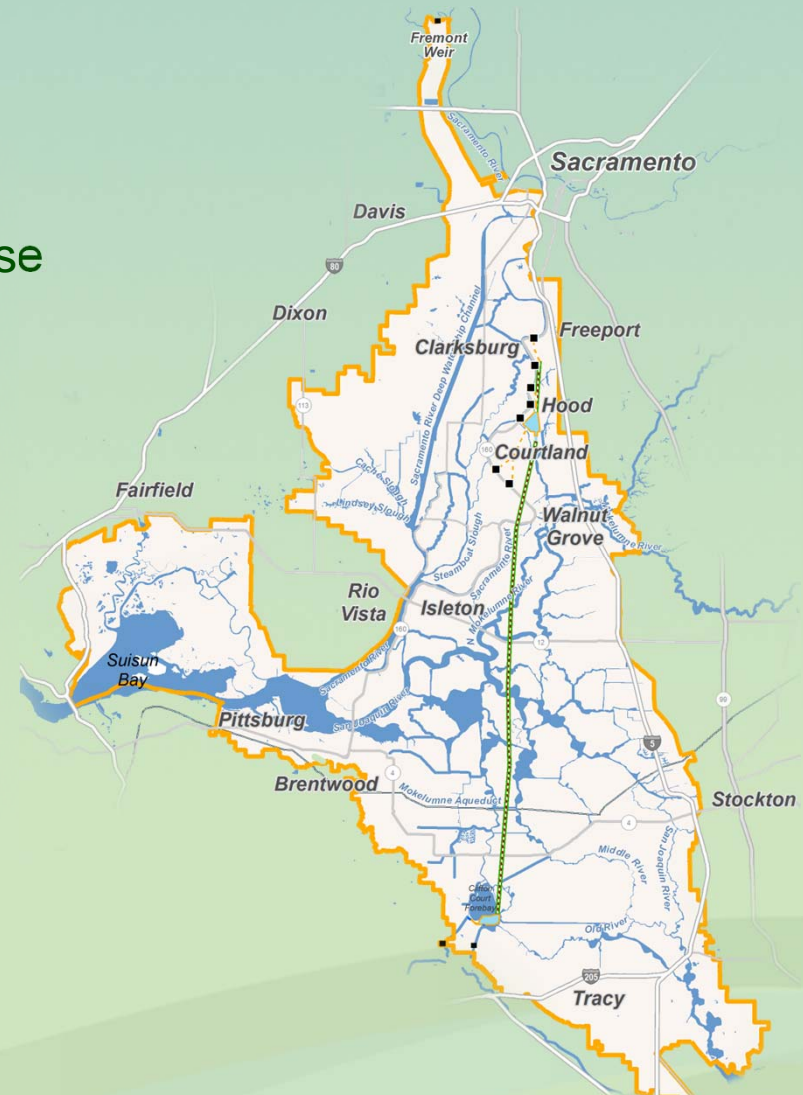
SIZING CONVEYANCE – BACKGROUND

- Existing aqueduct capacity - 15,000 cfs
- Initial BDCP Steering Committee capacity – 15,000 cfs
- 1982 Peripheral Canal - 22,000 cfs
- BDCP “Framework Proposal – 9,000 cfs; three intakes
- Final size yet to be determined



SIZING CONVEYANCE – RATIONALE

- Must meet needs for 100-200 years
- Address climate change and sea level rise
- Provide protection from seismic events
- Improve water quality
- Provide reliability – two tunnel design
- “Big gulp, Little sip”



NRDC PROPOSAL EXPANDS PERMIT REQUIREMENTS

Existing Proposal

- Conveyance/Operations
- Habitat

NRDC Alternative Proposal

- Conveyance/Operations
- Habitat
- Delta Levee improvements
- South of Delta Storage
- Local Water Supply Development

Alternatives analysis must identify specific project impacts

Expanding permit requirements could affect water supply reliability

RESPONSE TO NRDC PROPOSAL

Evaluation

- 3,000 cfs tunnel option is covered in the BDCP EIR/S
- Economic calculations of the cost/benefit of the portfolio proposal will be addressed in Chapter 9 of the BDCP and accompanying documents
- Other water use efficiency and supply alternatives (recycling, desalination) are being facilitated in IRWM and regulatory programs

Problems

- Does not meet long-term needs – reliability for all Delta diversions
- Does not meet co-equal goals
- Does not address reverse flows and south Delta restrictions
- Reduces habitat restoration by 60%
- Funding for local water supply projects is not identified

Hetch Hetchy Seismic upgrade: \$4.5 billion

This retrofit includes replacing pipes over SF Bay with a tunnel, a new dam and upgrade of water treatment facilities.



Source: Mountain Cascade Inc.

Photo: abc News

Water Investment Projects

Project	Cost	Population Served	Per capita cost
MWD Diamond Valley Lake / Inland Feeder	\$3,100,000,000	18,000,000	\$172
EBMUD	\$517,000,000	1,300,000	\$398
SDCWA Emergency Storage Project	\$1,500,000,000	2,800,000	\$536
BDCP	14,700,000,000	25,000,000	\$588
CCWD Los Vaqueros Project	\$570,000,000	550,000	\$1,036
SWP Coastal Aqueduct and CCWA Project	\$575,000,000	430,000	\$1,337
SFPUC's Hetch Hetchy Project	\$4,600,000,000	2,500,000	\$1,840

BDCP TIMETABLE

Second Administrative Draft

- Chapters 1-4 – Released March 14
- Chapters 5-7 – Released March 27
- Chapters 8-12 – Release on May 29

Public Draft of EIR/S

- Release will be October 1, 2013
- Current Administrative Draft was released May 9