



*Solving Problems where
People and Nature Intersect*



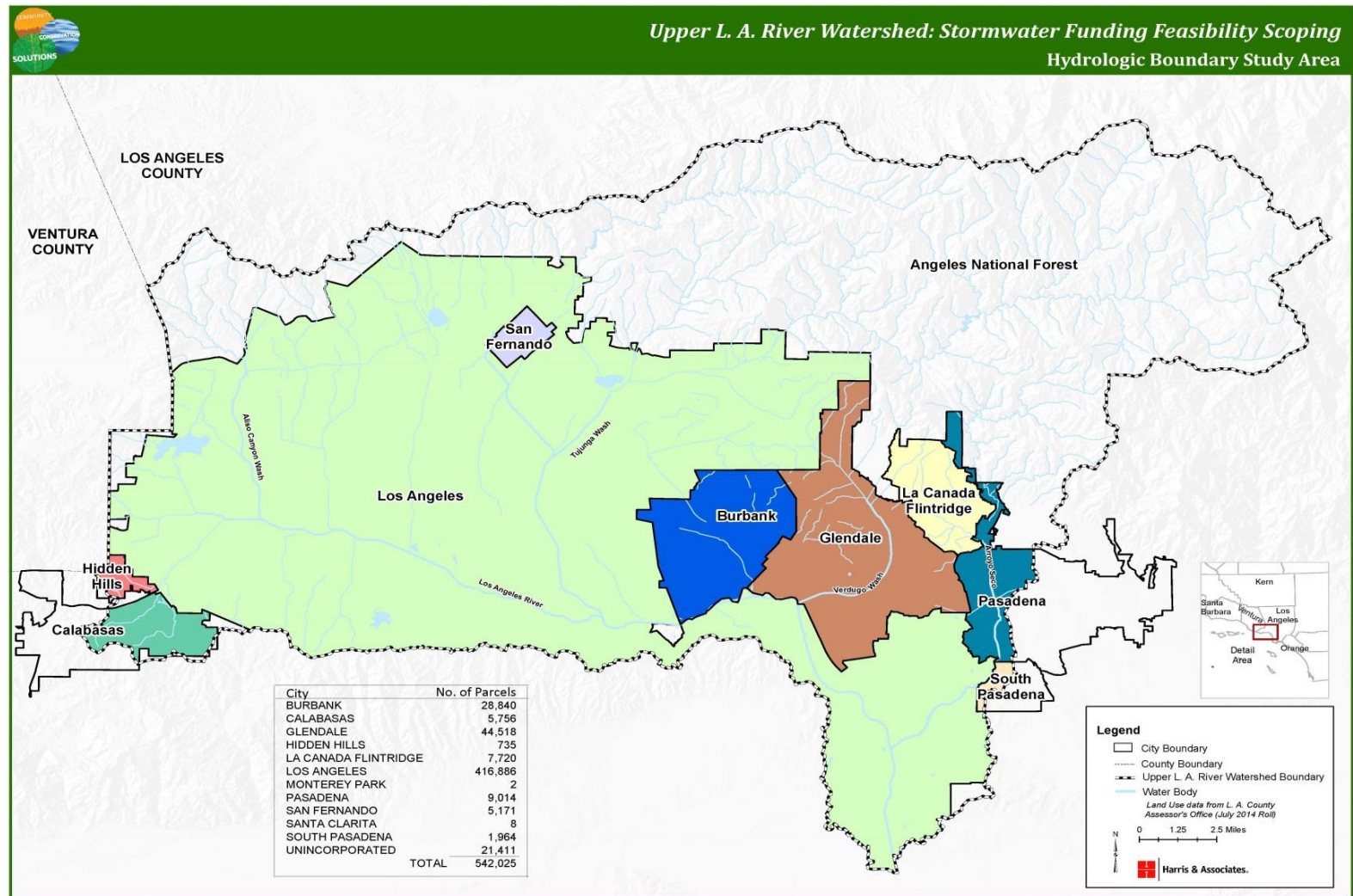
Upper L.A. River Watershed: Potential Stormwater Fee Feasibility Scoping

Summary of Findings

- **Fiscal Mechanism:** Prop. 218 property-based fee
- **Revenue Potential:** \$30M - \$120M/Year
- **Where:** ULAR Watershed
Hydrologic Boundary
- **Who Implements:** Joint Powers Authority
- **Who are the Voters?** Property Owners
- **Election Type?** Mailed Ballot

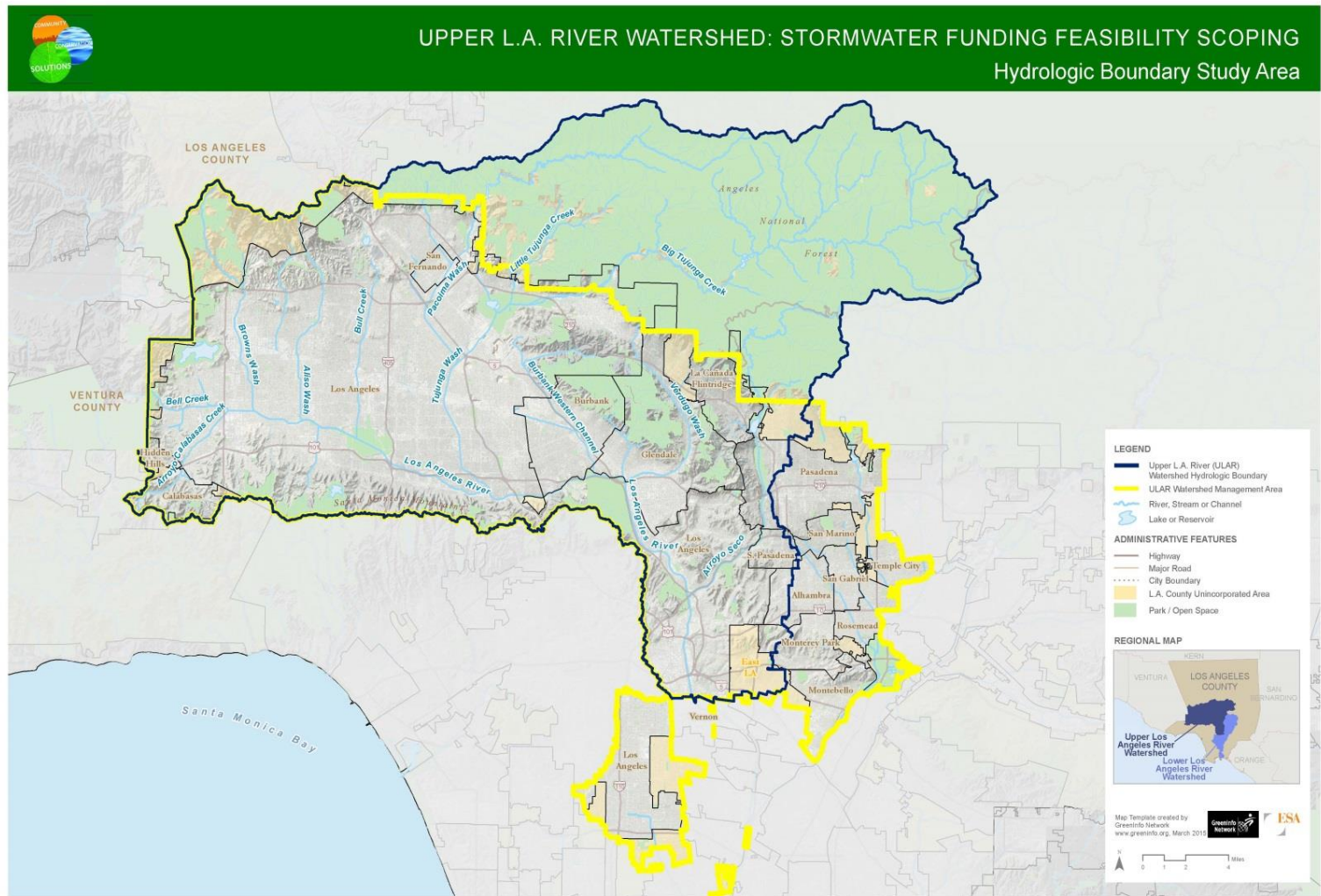


ULAR Watershed Hydrologic Boundary





ULAR Watershed Hydrologic Boundary & ULAR Watershed EWMP Boundary





Upper L.A. River Watershed: Potential Stormwater Fee Feasibility Scoping

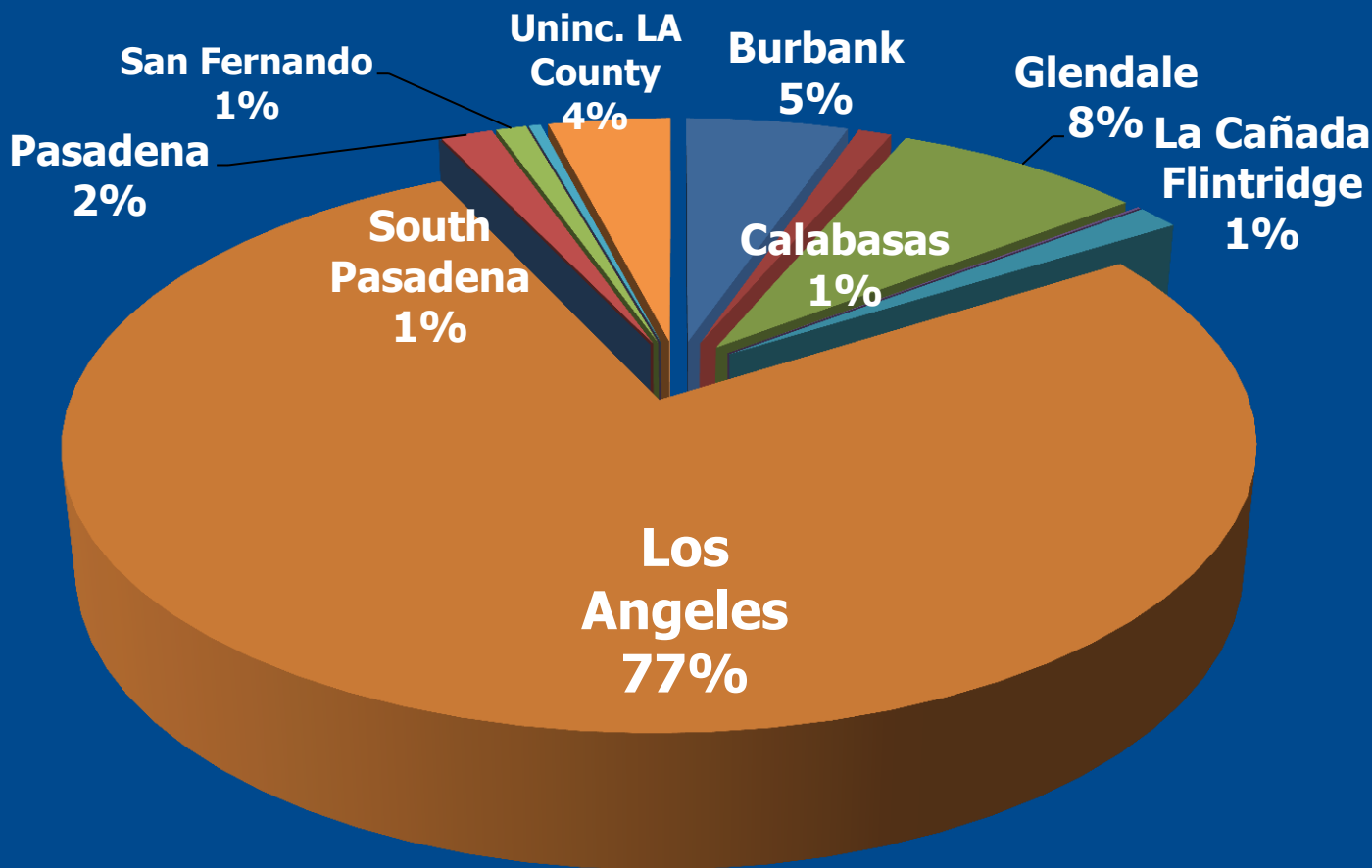
ULAR Watershed % of Cities

City	Parcels	% of City in ULAR Watershed
Burbank	28,840	100.0%
Calabasas	5,756	51.2%
Glendale	44,518	100.0%
Hidden Hills	735	53.1%
La Cañada Flintridge	7,720	100.0%
Los Angeles	416,886	48.1%
Pasadena	9,014	16.6%
San Fernando	5,171	100.0%
South Pasadena	1,964	16.3%
Unincorporated County	21,411	6.7%
Total Parcels	542,025	



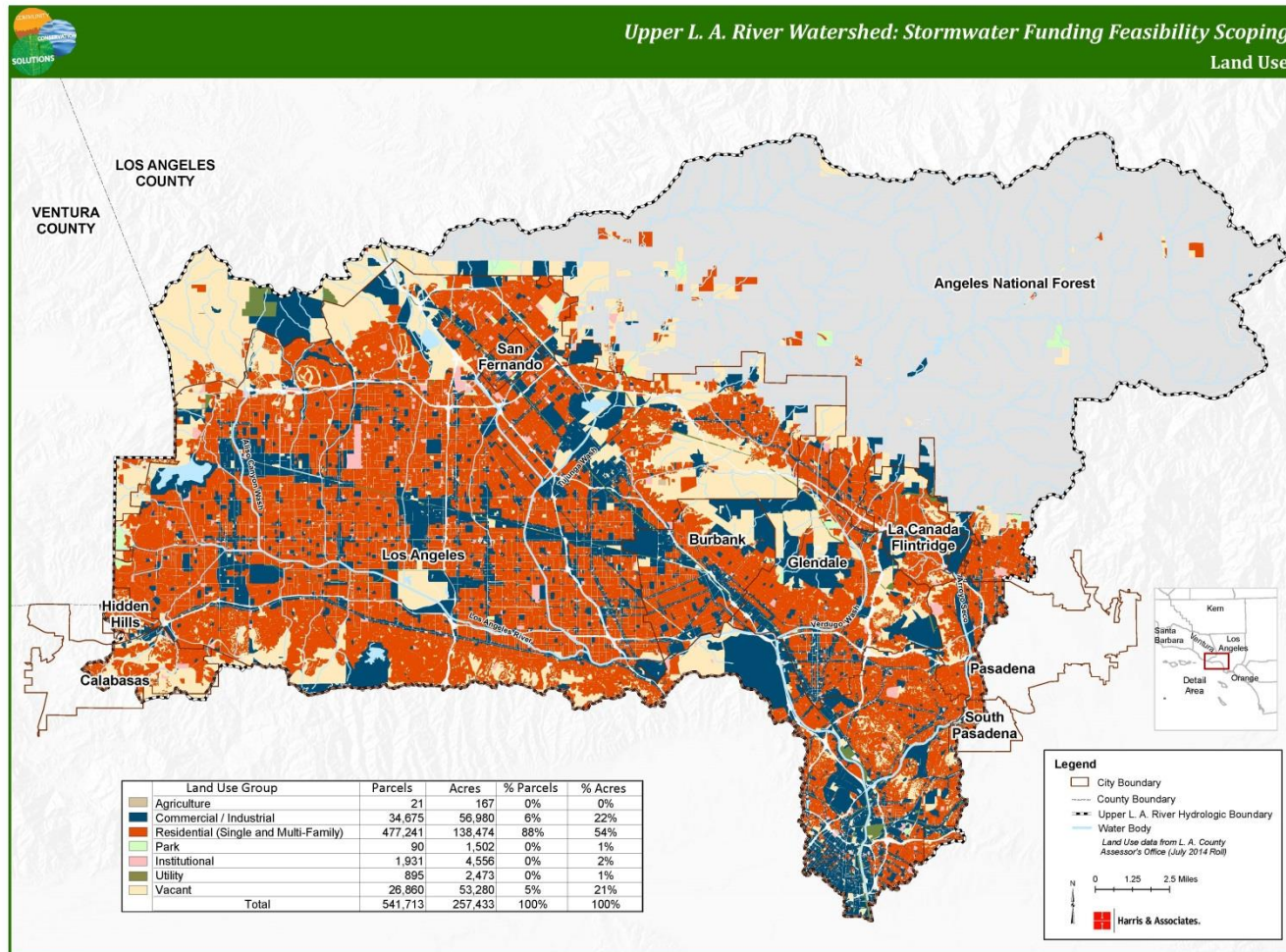
Upper L.A. River Watershed: Potential Stormwater Fee Feasibility Scoping

ULAR Watershed Makeup by City





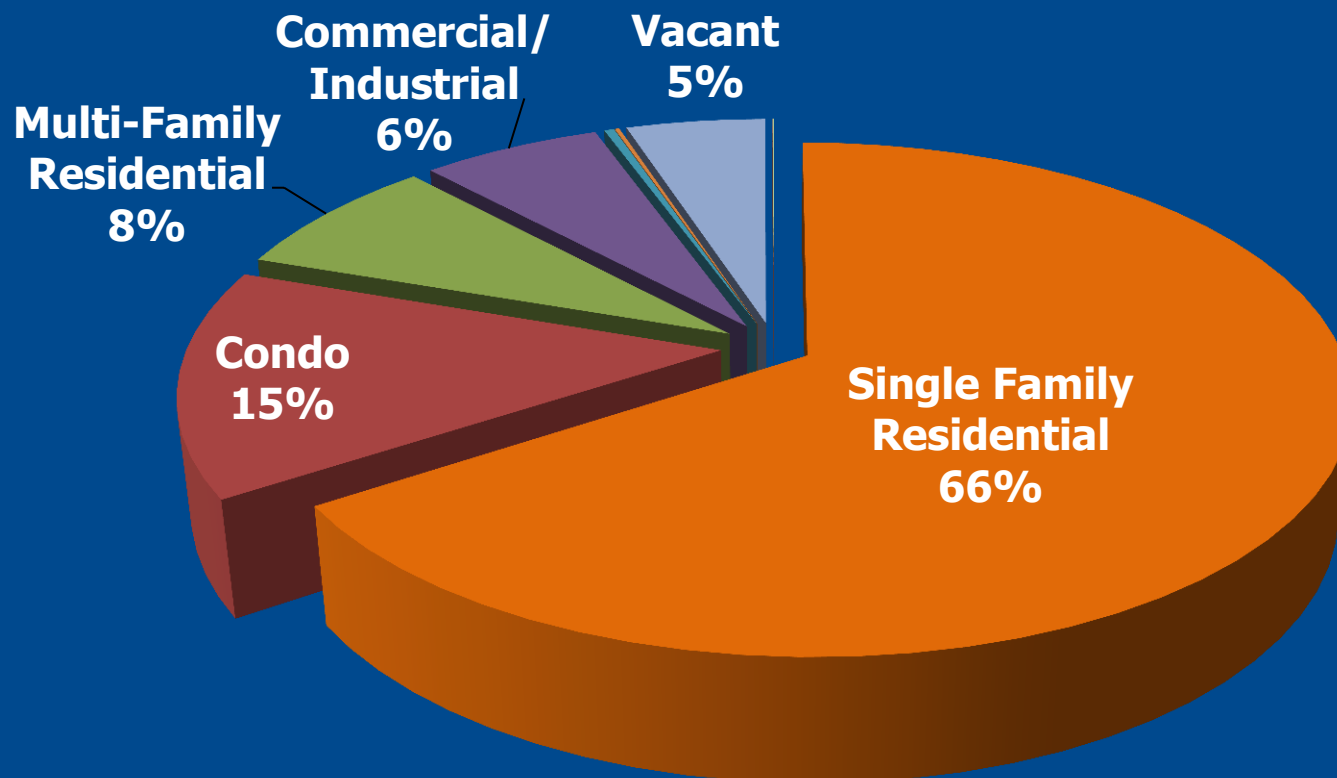
Upper L.A. River Watershed: Stormwater Fee Feasibility Scoping Parcels by Land Use





Upper L.A. River Watershed: Stormwater Fee Feasibility Scoping

Who are the Property Owner-Voters?





Upper L.A. River Watershed: Potential Stormwater Fee Feasibility Scoping

Elements for Success through Prop. 218 Mailed Ballot Elections

- **Team with expertise & experience**
- **Meticulous analysis of all components**
- **Develop strategic plan**
- **Public opinion research of voters**
- **Meet Prop. 218 proportionality requirements**
- **Develop multi-benefit expenditure plan**
- **Engage with stakeholders & form partnerships**
- **Develop clear communications materials**
- **Carry out the plan**



Upper L.A. River Watershed: Stormwater Fee Feasibility Scoping

**Permanent Source of
Stormwater Funding**

