



Successes and Challenges on the Colorado River

April 26, 2017

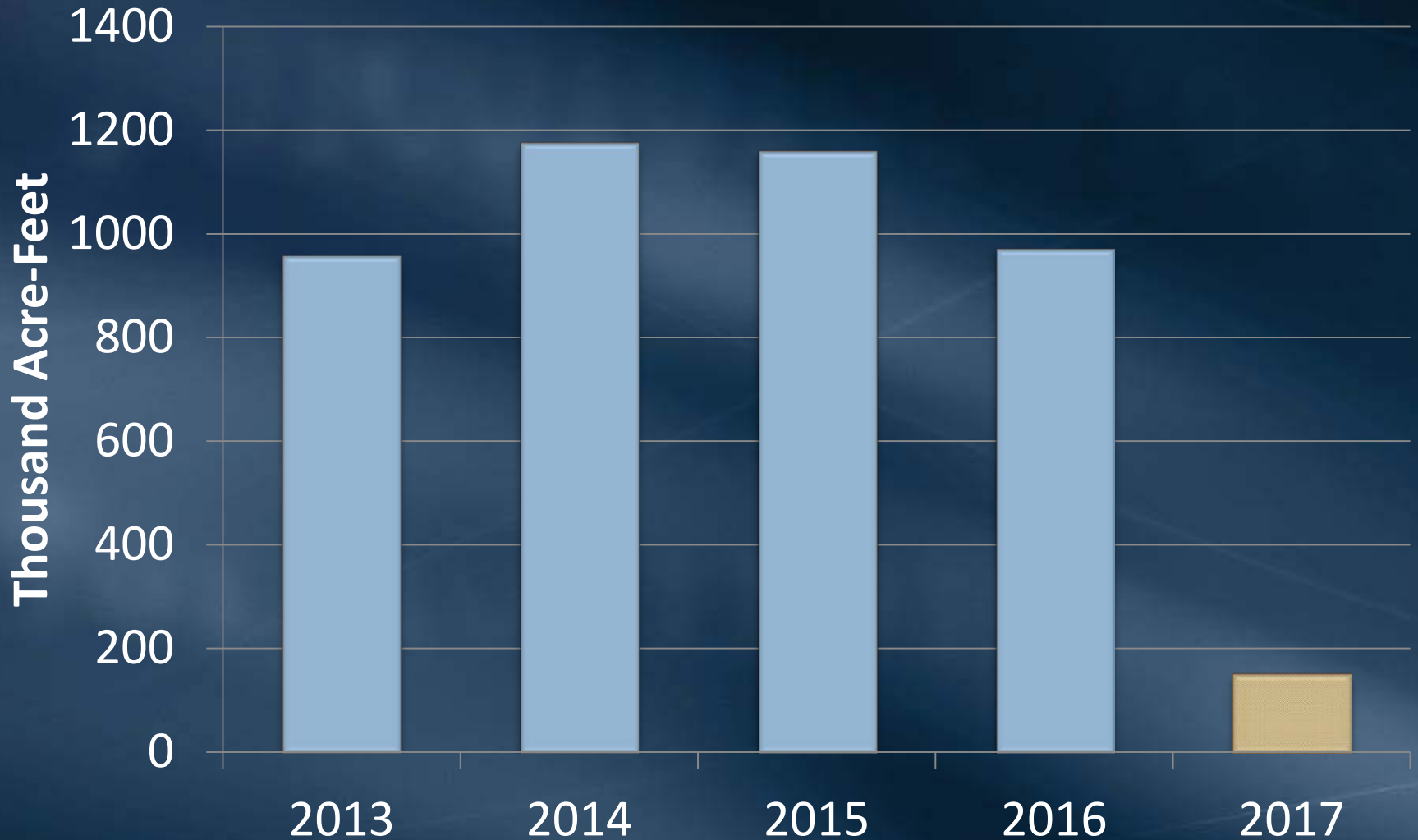
Southern California Water Dialogue

Bill Hasencamp
Metropolitan Water District

Southern California's Water Supply Sources

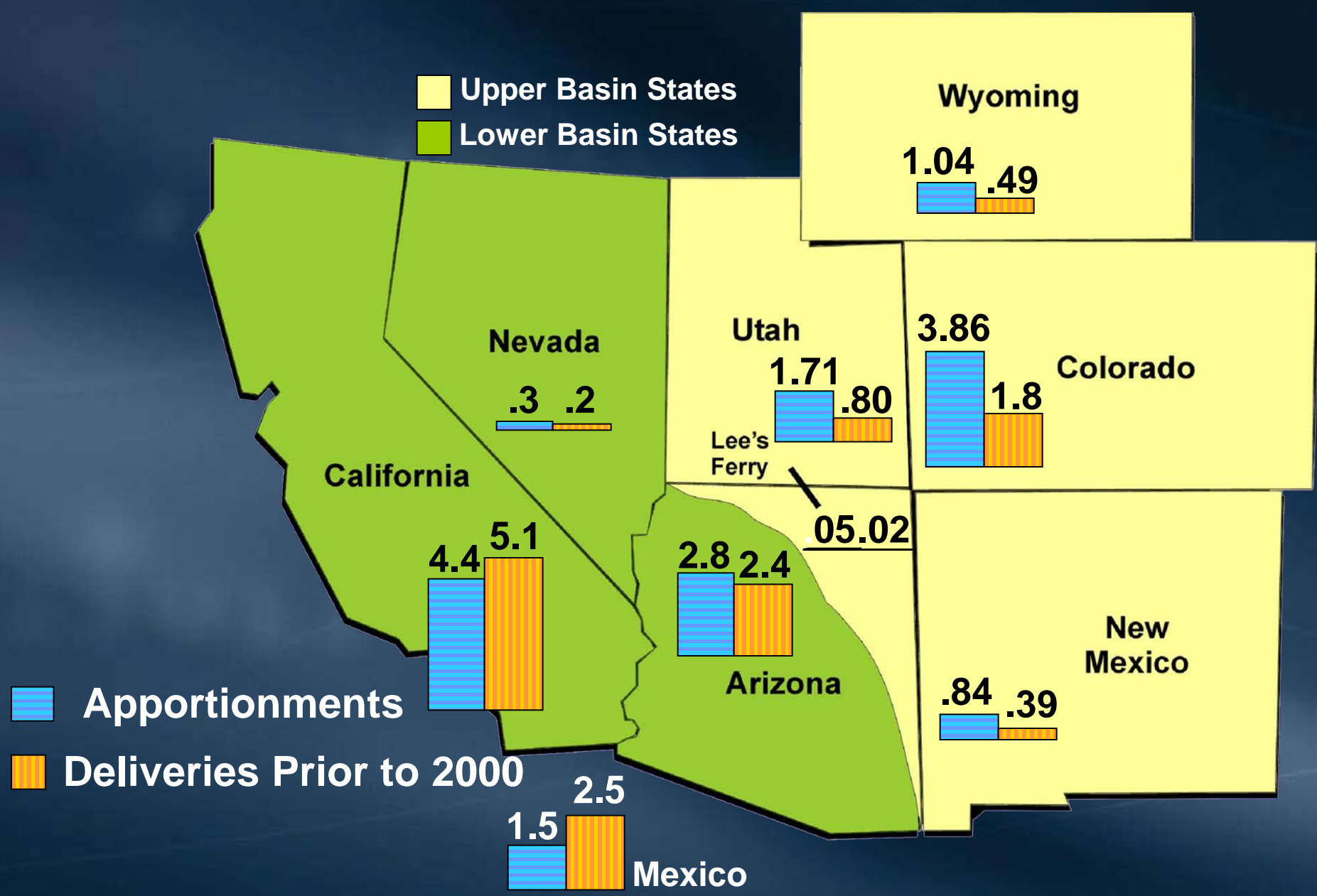


CRA Deliveries into Service Area





Colorado River Apportionments (Million acre-feet)





California Service Areas



California Priority System (1931)

1. Palo Verde	
2. Yuma Project	
3. (a) Imperial & Coachella (b) Palo Verde	3.85 MAF
4. Metropolitan	<u>550 TAF</u>
Total Basic Apportionment 4.4 MAF	

5. Metropolitan	662 TAF
6. Imperial, Coachella, Palo Verde	300 TAF

Quantification Settlement Agreement

Quantified Water Budgets

	<u>maf</u>
PVID	
Yuma Project	
	0.42 (Average)
IID	3.10
CVWD	0.33
<u>MWD *</u>	<u>0.55</u>
Total	4.40

* Amount fluctuates based on PVID/Yuma Project use, unused IID and CVWD water

California 4.4 Plan

Agricultural Conservation Measures with IID



California 4.4 Plan

Line the All-American, Coachella Canals



California 4.4 Plan

Incentivize PVID Farmers to Not Grow Crops



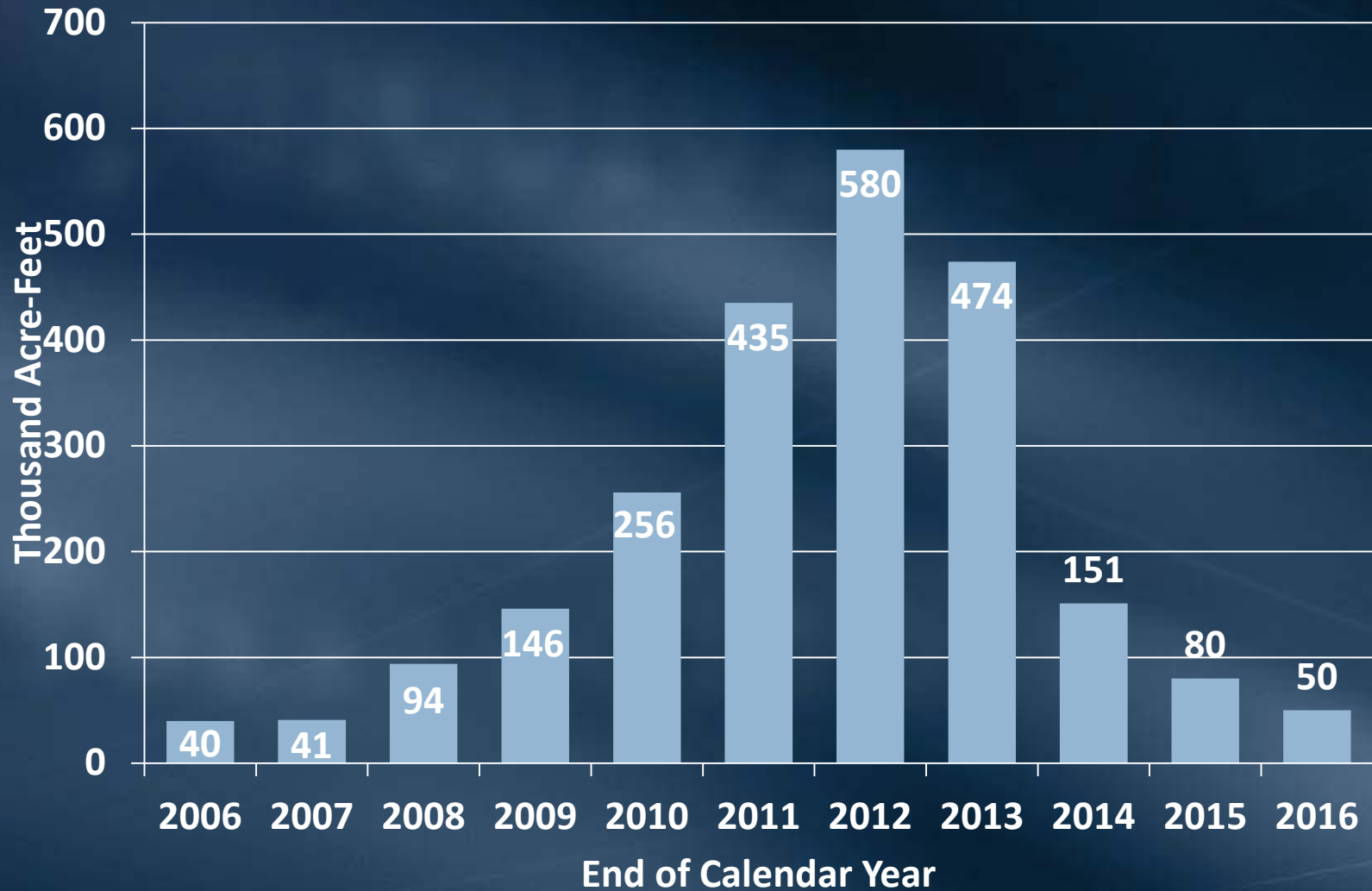
Water Sharing Agreement with Nevada



Storage Program in Lake Mead (ICS)

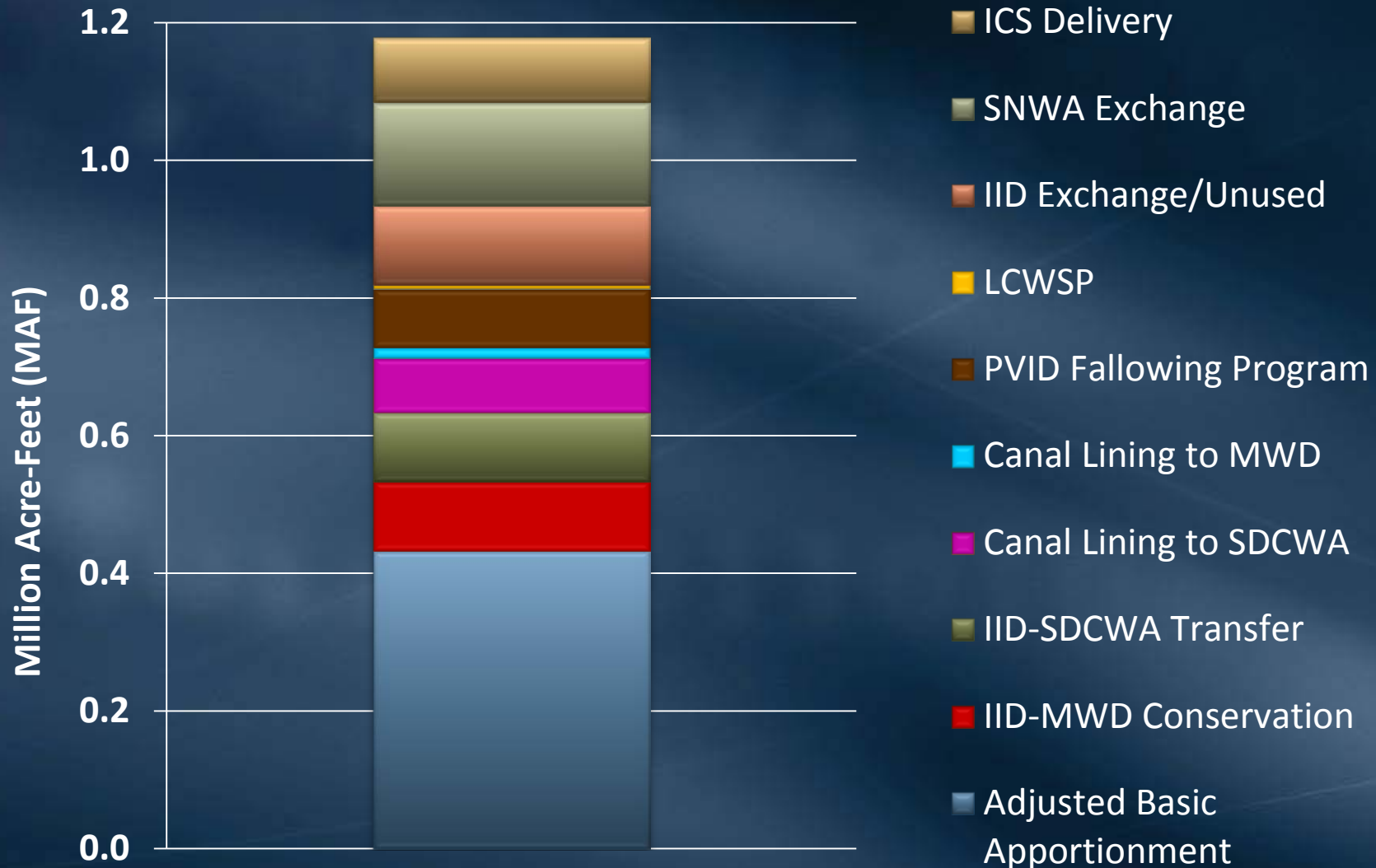


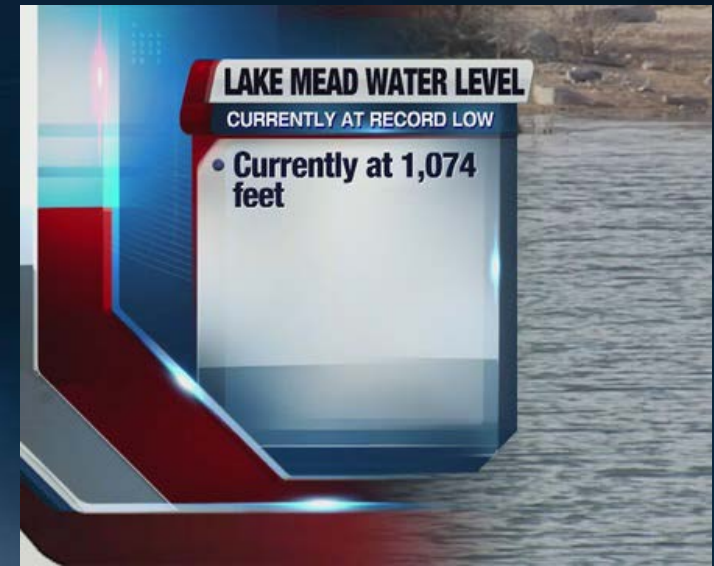
MWD Storage Balance (ICS) in Lake Mead



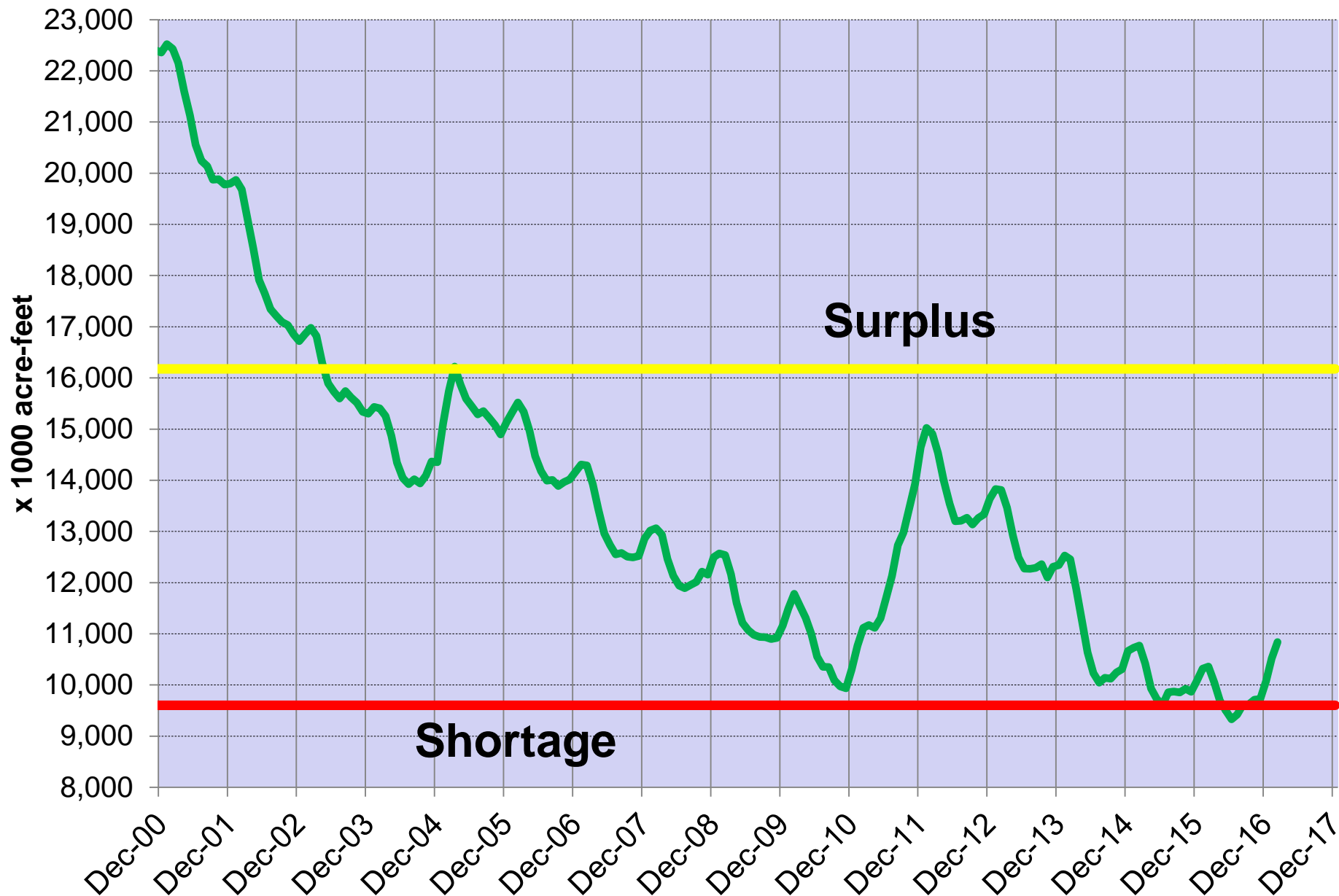
2015 Colorado River Aqueduct Supplies

1.18 MAF Net Diversion





Lake Mead Storage 2000 – 2017



Basin States Developing Drought Contingency Plans



ARIZONA WATER NEWS

**Colorado River water users make progress
toward a drought contingency plan**



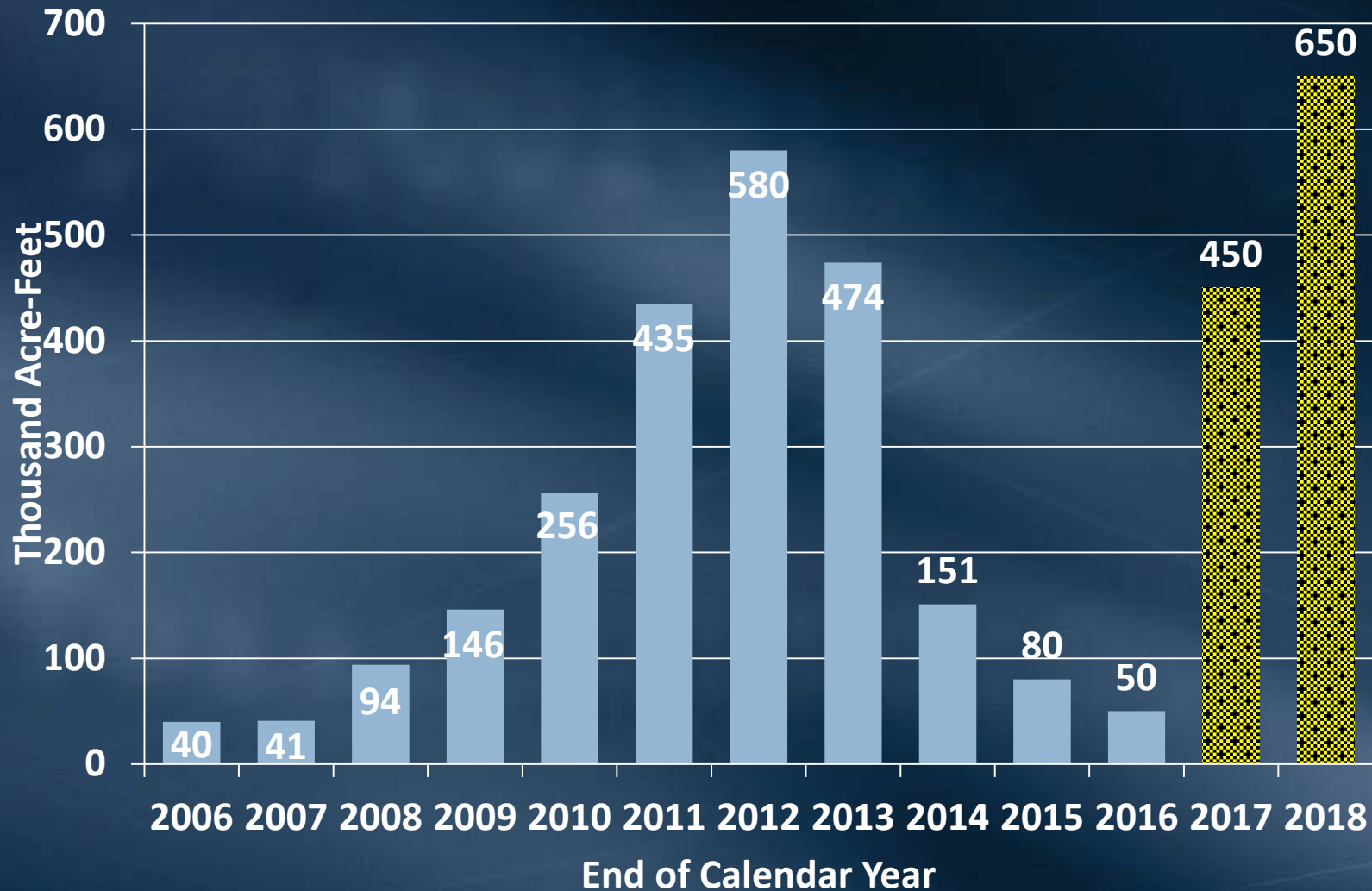
[READ MORE](#)

Proposed Drought Contingency Plan: Additional Flexibility Important to MWD

Proposal for CA to reduce diversions at lower Lake Mead levels includes:

- Allowing agencies to store and recover ICS during shortages
- Allowing CA to exchange water with other states during shortages
- Allowing binational exchanges during shortages

Projected MWD ICS Storage Balance

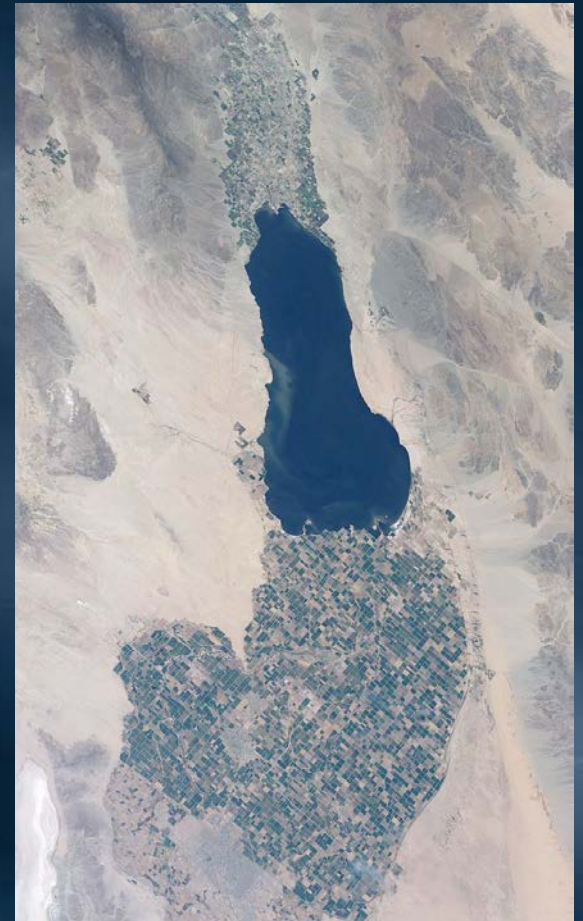


California Need: Salton Sea Solution



QSA Provided Time to Restore Salton Sea

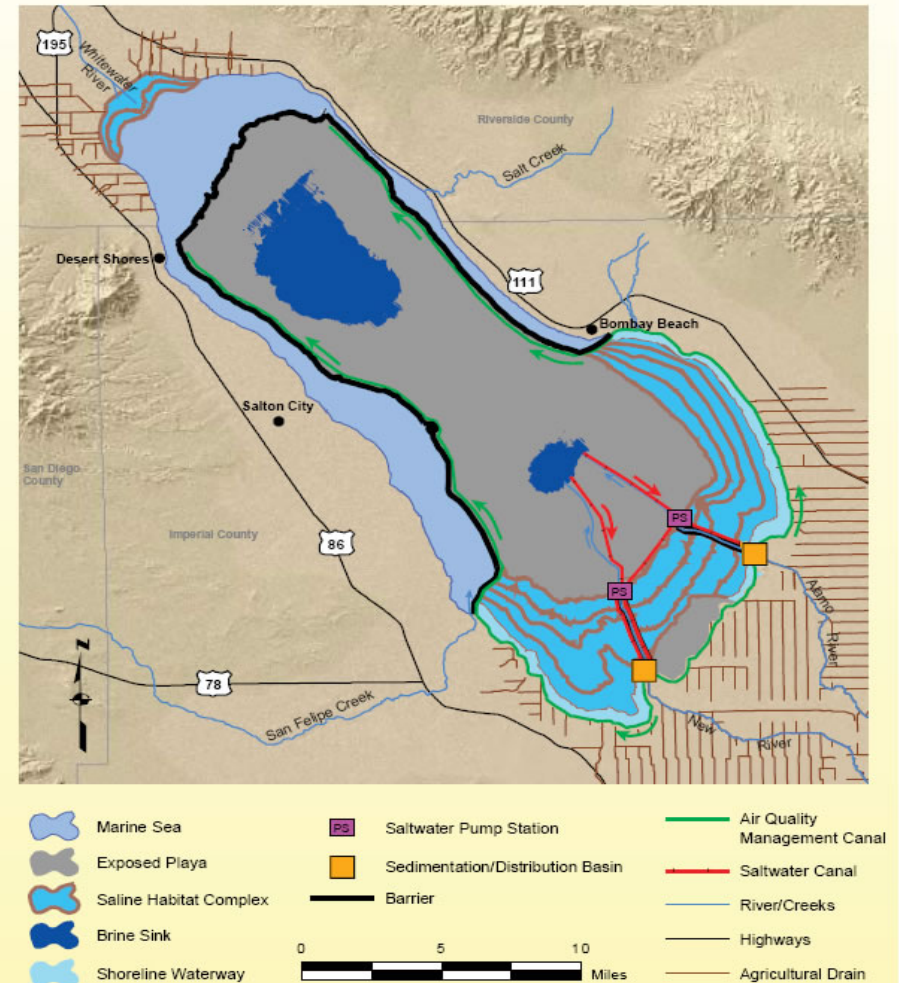
- Formed in 1905
 - Sustained by ag drainage
- 50% saltier than ocean
 - Salinity increase 1%/yr
 - Frequent fish kills
- Sea protected from IID-SDCWA Transfer impacts for 15 years
 - IID to deliver 800 TAF of “mitigation water” to Salton Sea through 2017
 - Provided time for state to develop long-term solution



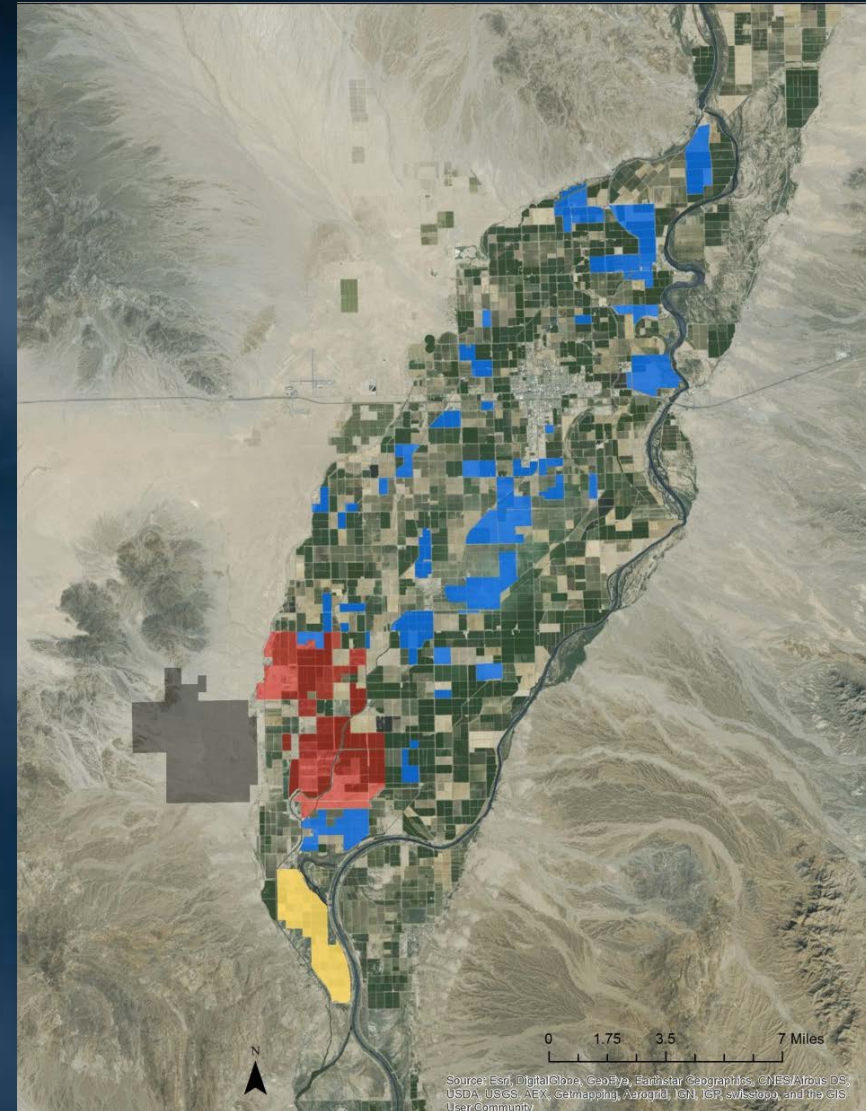
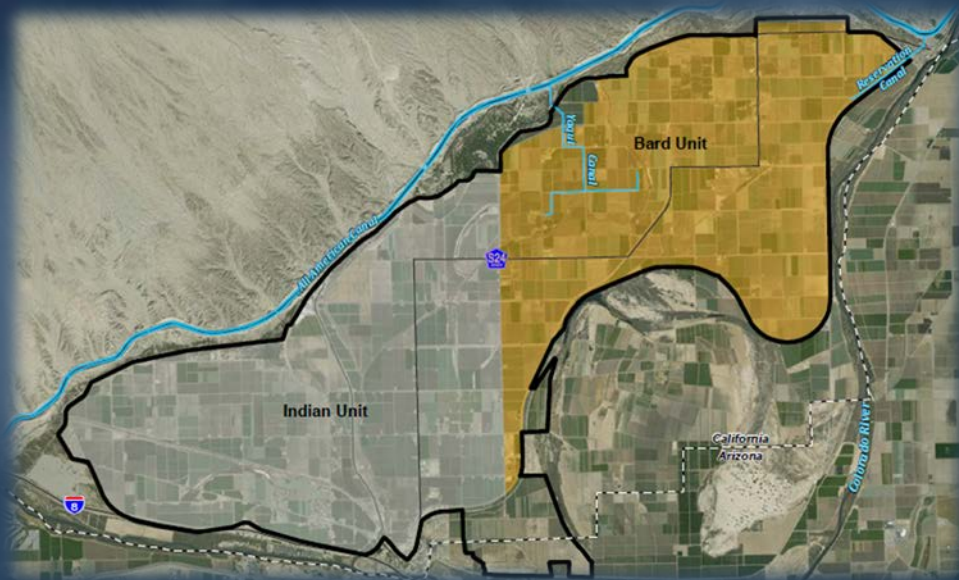
15 Year Period Nearing End

- 2008 state issued Draft EIR
 - Preferred Alternative:**
\$9 billion cost
- 2014: IID petitioned SWRCB
- 2015-16: SWRCB Workshops
- 2016: State adds \$80 million to state budget for Sea
- Sept 2016: Fed-State MOU
- January 2017: DOI Secretarial Directive

Figure 6
Preferred Alternative



New Efforts to reduce demand: Bard and PVID



*“The best way to
predict your future
is to create it.”*

- Abraham Lincoln



Bill Hasencamp

213-217- 6520

whasencamp@mwdh2o.com