

LA's Future Water Supply Reliability

Southern California Water Dialogue
"Getting it in the Ground"

Richard F. Harasick, P.E.
Senior Assistant General Manager –Water System

March 22, 2017

Putting Customers First 

Local Water Supply Program Supports City's Sustainable Water Mandates



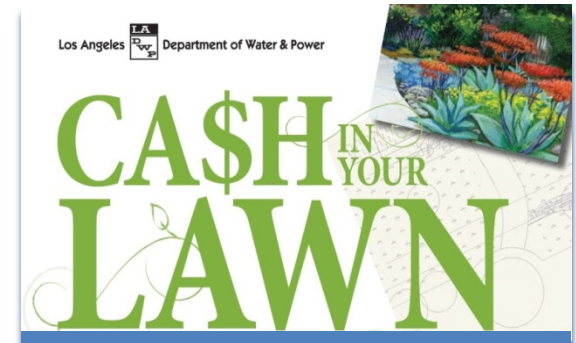
Local Water Supply Program



Recycled Water



Stormwater Capture



Water Conservation

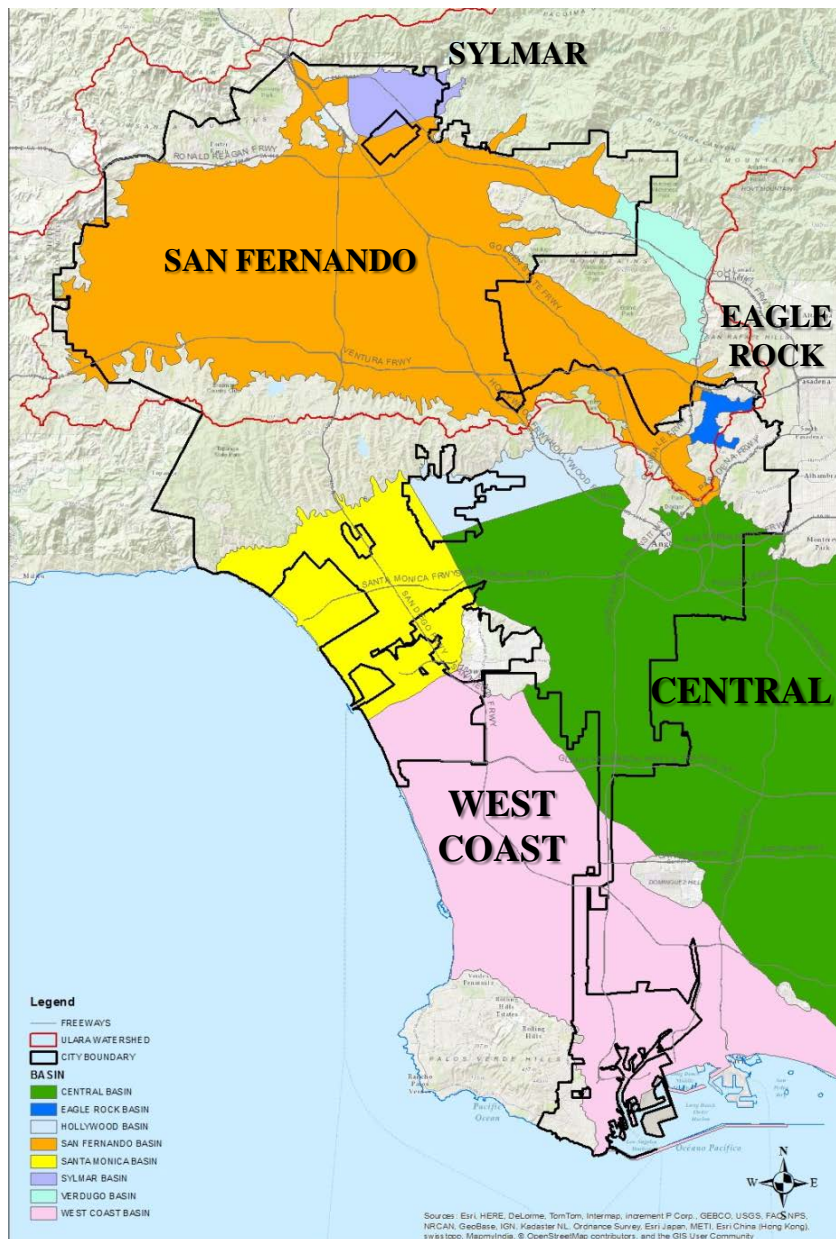


SF Groundwater Basin Remediation



Local Water Supply Reliability

LA's Groundwater Water Rights

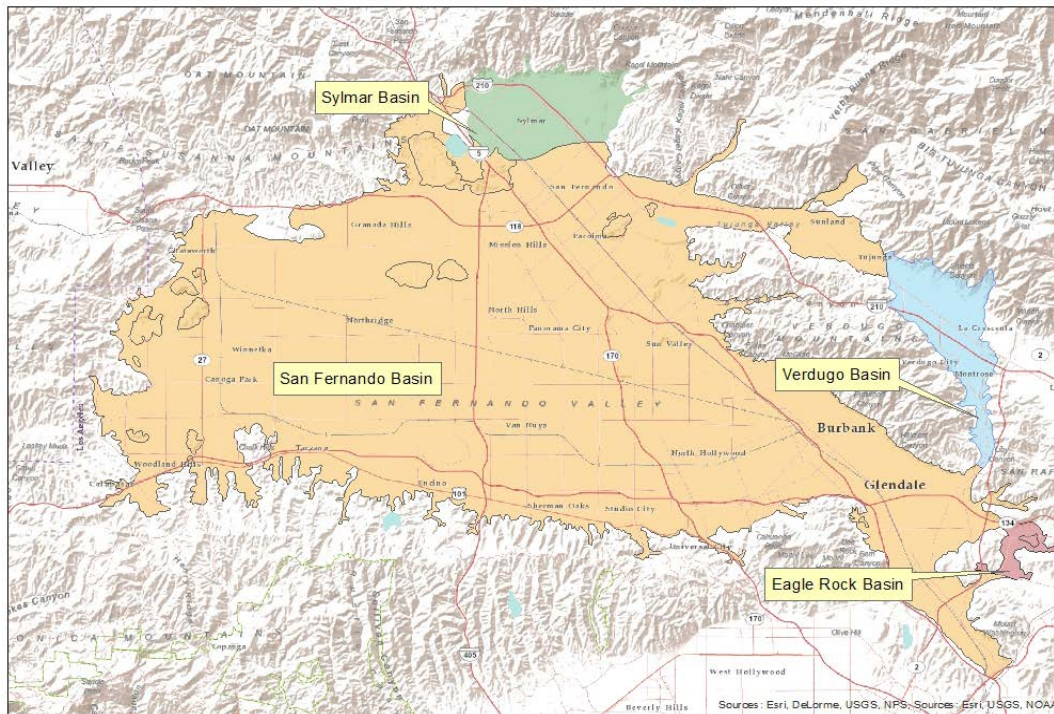


Primary Groundwater Basins		
	San Fernando Basin	87,000 AFY
	<i>Central Basin</i>	<i>17,236 AFY</i>
	Sylmar Basin	3,570 AFY
	<i>West Coast Basin</i>	<i>1,503 AFY</i>

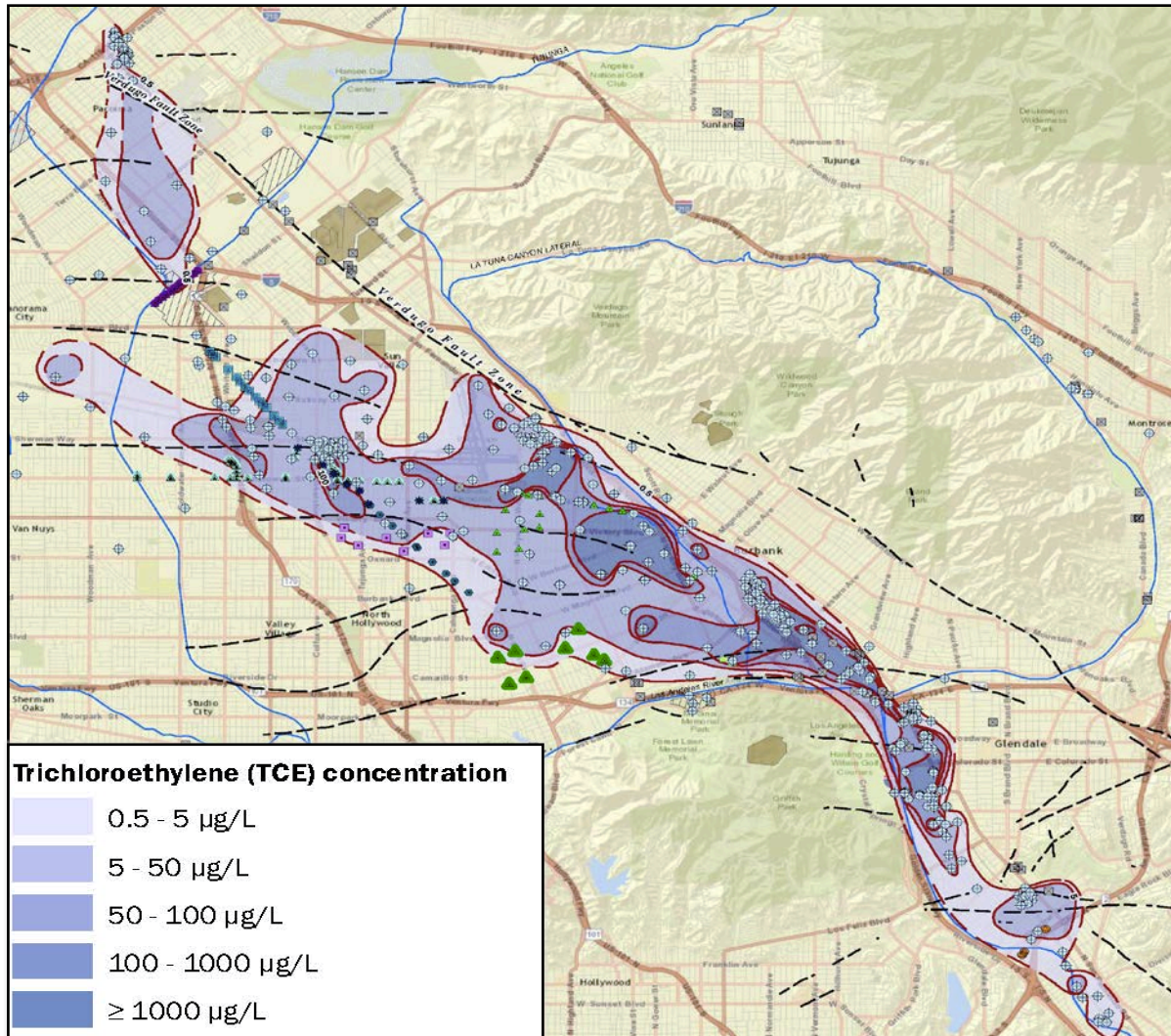
LA's Total Groundwater **109,309 AFY**

SF Groundwater Basin Remediation

Planned groundwater basin remediation will be crucial to restoring the health and beneficial uses of the San Fernando Basin



San Fernando Groundwater Basin Multiple Plumes and Contaminates



OTHER CHEMICALS OF CONCERN

Volatile Organic Compounds (VOC's)

- Tetrachloroethylene (PCE)
- 1,1-Dichloroethene (1,1 DCE)
- cis-1,2-Dichloroethylene (cis-1,2DCE)
- 1,2-Dichloroethane (1,2 DCA)
- Trichlorofluoromethane (Freon 11)
- Carbon Tetrachloride

Inorganic Compounds

- Chromium
- Perchlorate
- Nitrate

Other Chemicals

- n-nitrosodimethylamine (NDMA)
- 1,2,3-Trichloropropane (1,2,3 TCP)
- 1,4-Dioxane

Site Characterization

Characterized basin

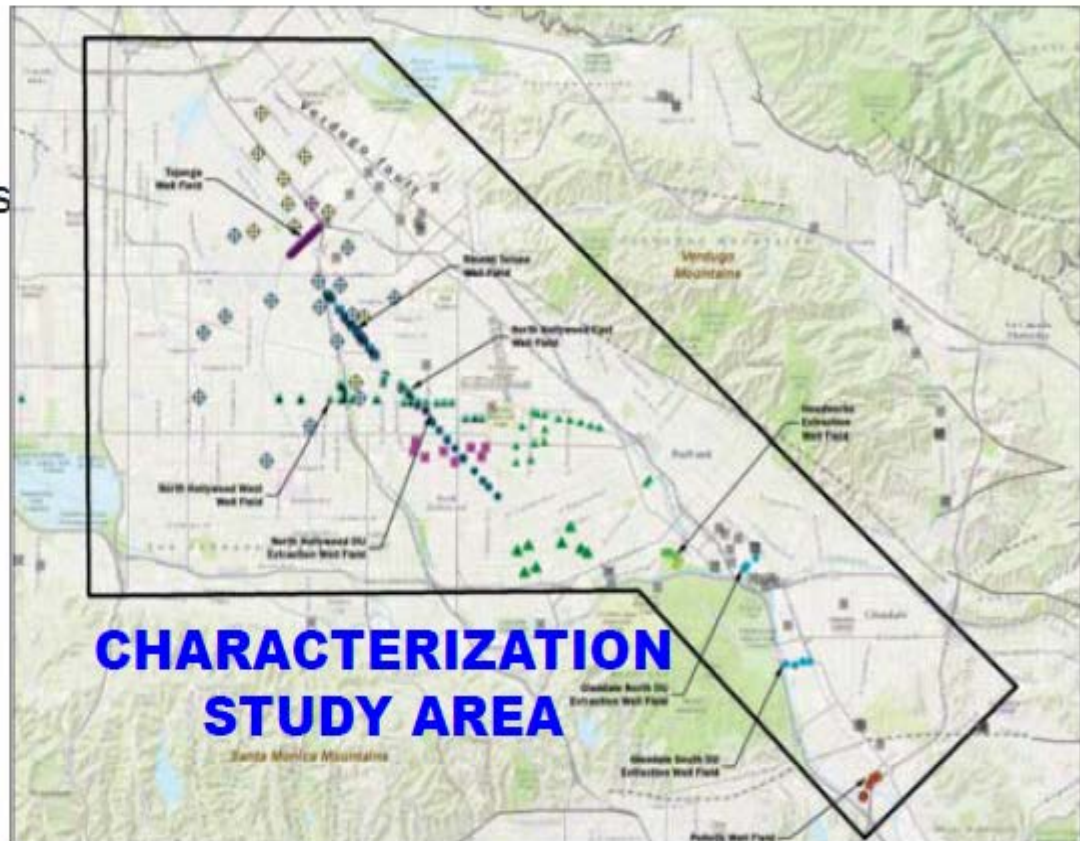
- 6-year study (2015)
- Identified contaminants
- 70,000 data points

New Monitoring Wells

- 26 Monitoring Wells

**Updated 1992
Remedial Investigation**

Community Involvement



SFB Proposed Projects

(Pending completion of Remedial Investigation /Feasibility)

Tujunga Central
VOC & 1,4-Dioxane

North Hollywood Central
VOC & 1,4-Dioxane

North Hollywood West Wellhead
1,4-Dioxane

Pollock
1,4-Dioxane

TCE/PCE BOUNDARY

0 0.5 1 2 3 Miles

Local Supply Development - Recycled Water

Goal: 75,400 AFY

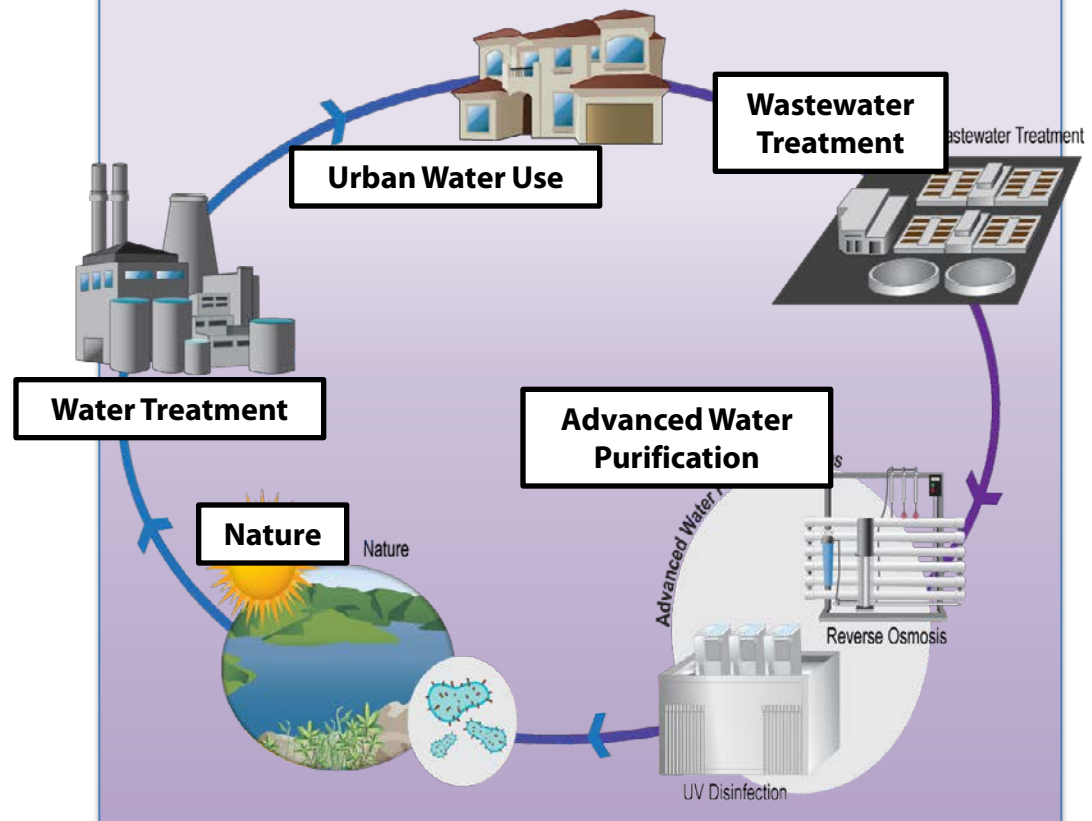
NPR: 45,400 AFY

Non-Potable Reuse



IPR/GWR: 30,000 AFY

Indirect Potable Reuse



Local Supply Development - Stormwater Capture

SW Capture Potential: 68,000 – 114,000 AFY

Dam Improvements



Centralized



Spreading Basins

Dry Wells



Cisterns



Distributed



Green Streets



Rain Barrels

Thank You



Questions?

