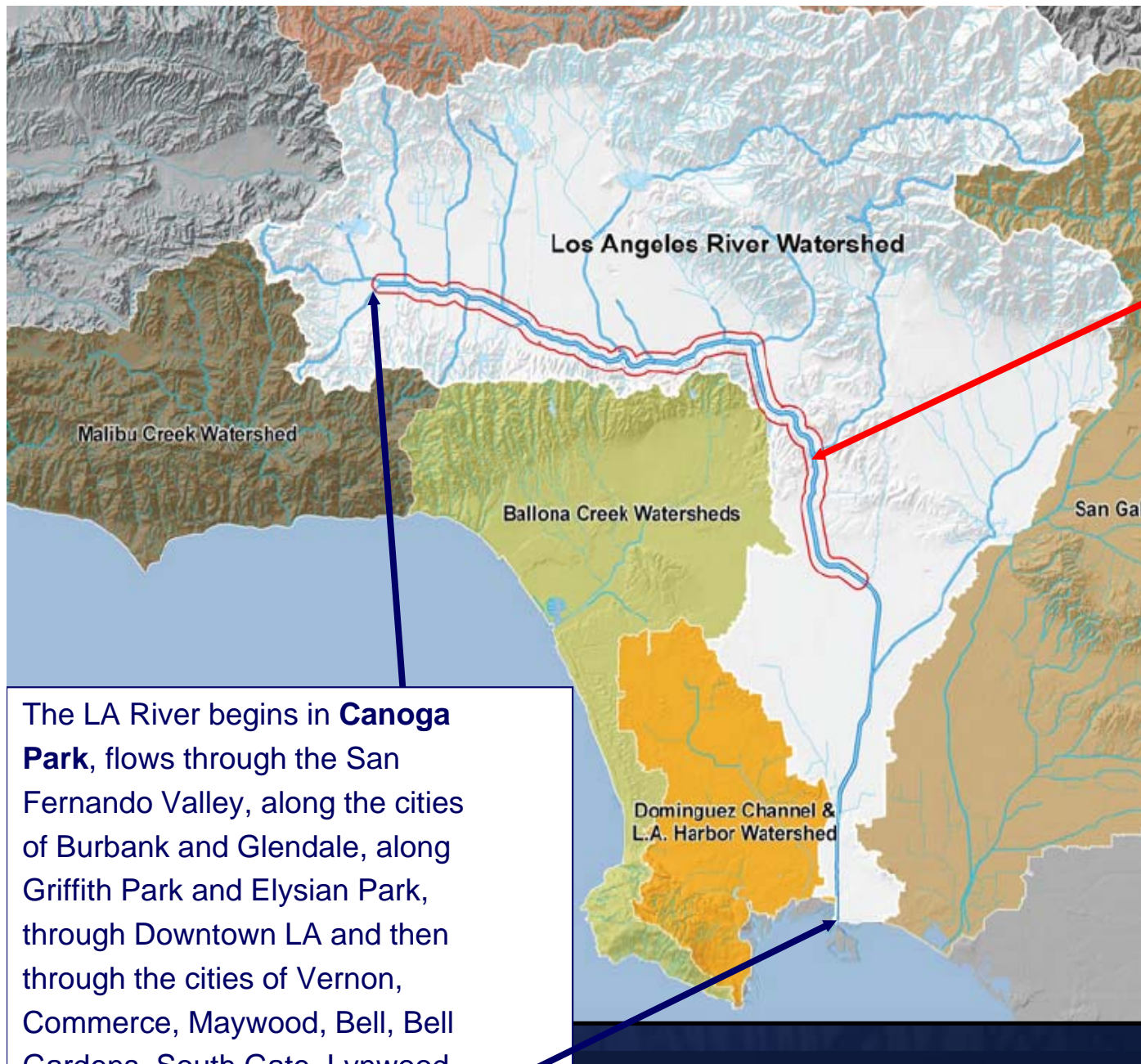


Los Angeles River Revitalization

“River Stewardship”: Presentation at the Southern California Water Dialogue
September 26, 2012





LA River Watershed:
870 square miles

LA River:
51 miles

1st 32 miles in City of LA

Elevation at Origin
(Canoga Park):
772 feet

Elevation at Outlet
(Pacific Ocean):
0 feet

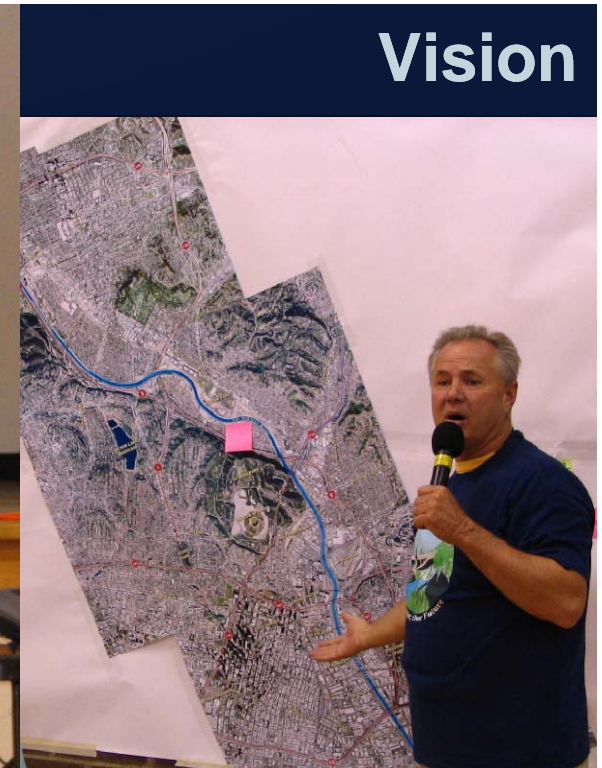
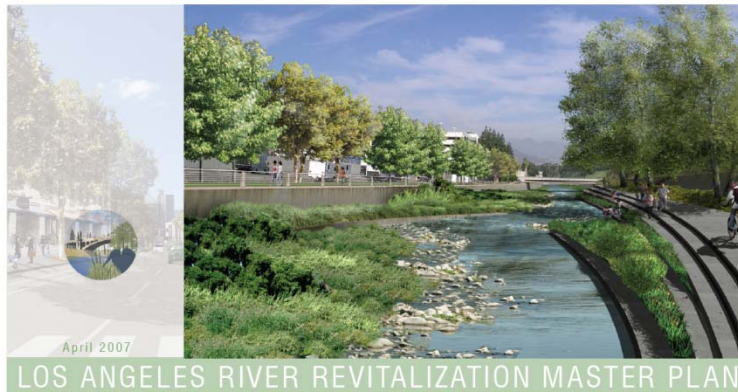
Avg. Slope:
0.29%

Avg. Annual
Precipitation:
15 inches

Avg. Daily Discharge:
320 cfs or 207 mgd

The LA River begins in **Canoga Park**, flows through the San Fernando Valley, along the cities of Burbank and Glendale, along Griffith Park and Elysian Park, through Downtown LA and then through the cities of Vernon, Commerce, Maywood, Bell, Bell Gardens, South Gate, Lynwood, Compton, Paramount, Carson, and **Long Beach**

The LA River flows through the nation's 2nd largest urban region, into 2 of the world's busiest port regions, and into the world's largest water body.



- **Oversight/Direction:** Mayor and City Council Ad Hoc Committee on the River
- **Project Manager:** Department of Public Works, Bureau of Engineering
- **Funding:** Los Angeles Department of Water and Power
- **Consultants:** Team led by Tetra Tech, Inc.
- **Key Agency Partners:** US Army Corps of Engineers, State of California, LA County



Adopted May 9, 2007

- 18 formal public meetings; 40 informal; 3 advisory committees
- First 32 miles of 51-mile river
- 240+ potential projects





- 20 areas of targeted focus and 5 detailed opportunity areas
- 3 new management entities
- Prioritizes a 32-mile (64 miles—both sides) trail system that will connect to the Metro **Orange**, **Gold**, and **Red** Lines, Union Station, and the County's LA River Bike Path)
- Calls for LA River Improvement Overlay district (LA-RIO)
- Proposes changes to the river's concrete channel for the first time...

Within the City of LA, the LA River Corridor (1/2 mile from each bank) is Home to:

More than 1 million people

More than 390,000 housing units

More than 480,000 workers

More than 35,000 businesses

More than 80 schools

LA State Historic Park/Cornfields: Connecting to the River Under the Rail



LA State Historic Park/Cornfields: Connecting to the River Under the Rail



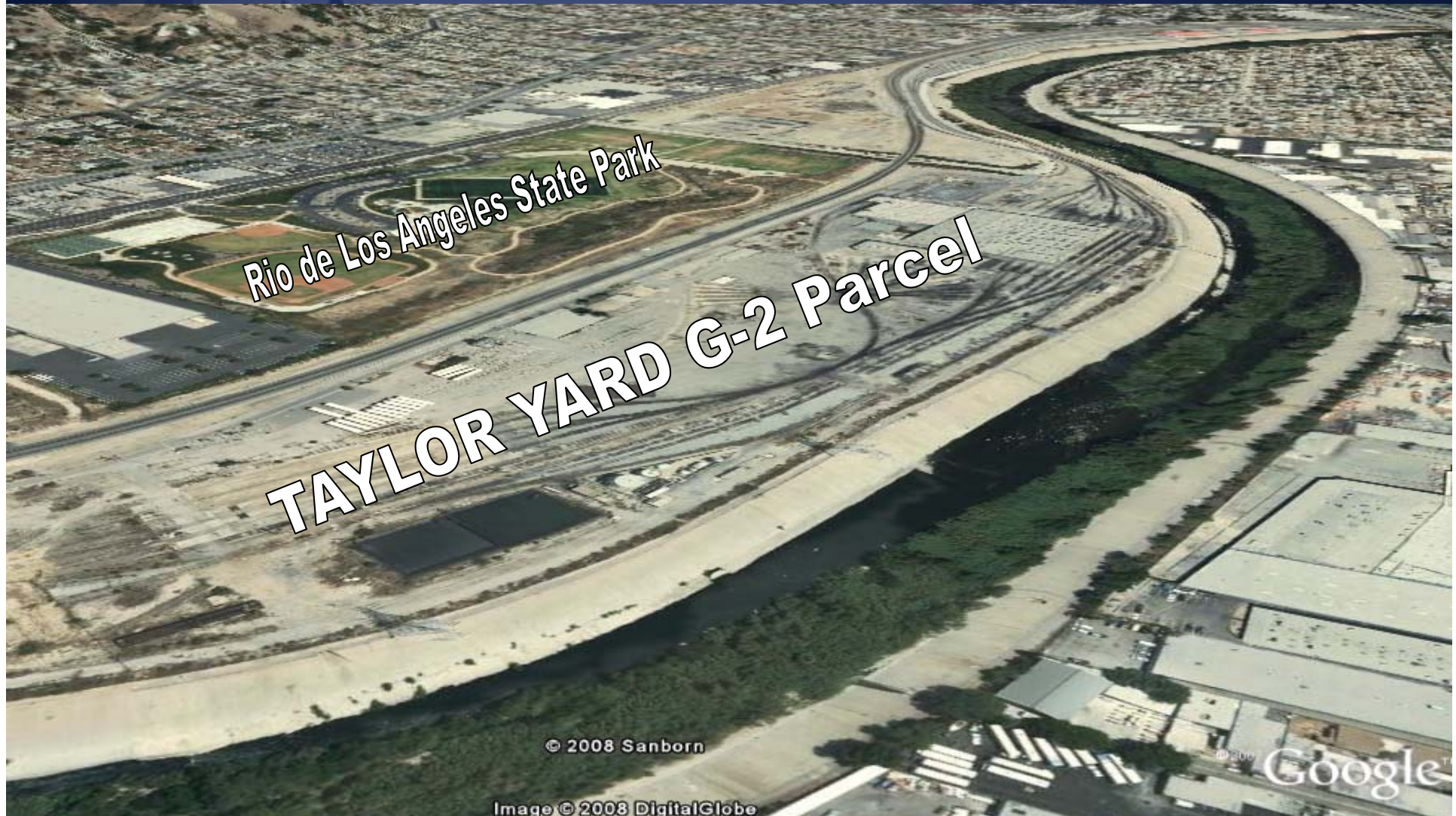


THE LOS ANGELES RIVER REVITALIZATION MASTER PLAN

OUR RIVER, OUR FUTURE

Most Significant Change

Acquisition of the 42-acre "G-2" rail yard parcel is critical to LA River revitalization.





THE LOS ANGELES RIVER REVITALIZATION MASTER PLAN

OUR RIVER, OUR FUTURE

Most Significant Change

Acquisition of the 42-acre “G-2” rail yard parcel is critical to LA River revitalization.



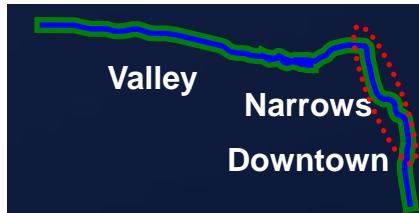


Bringing Nature Back to the Post-Industrial Landscape

- From a near-absence of environmental value...



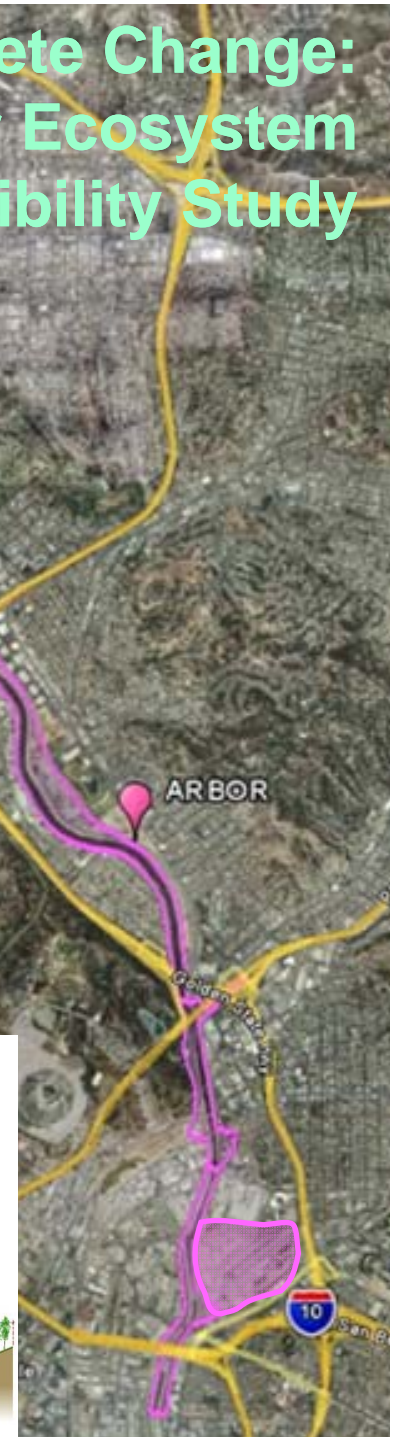
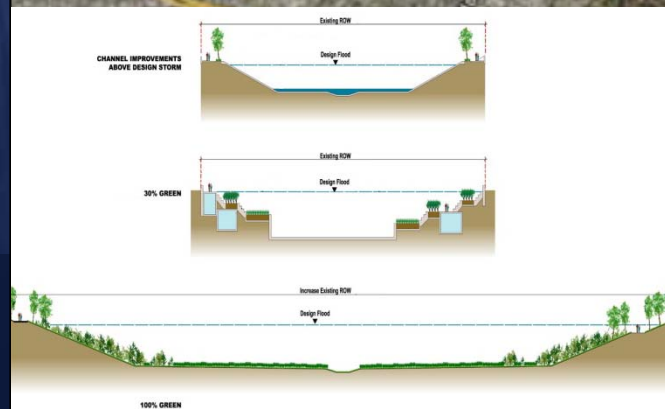
Bringing Nature Back to the Post-Industrial Landscape
• to a re-envisioned, rejuvenated habitat corridor

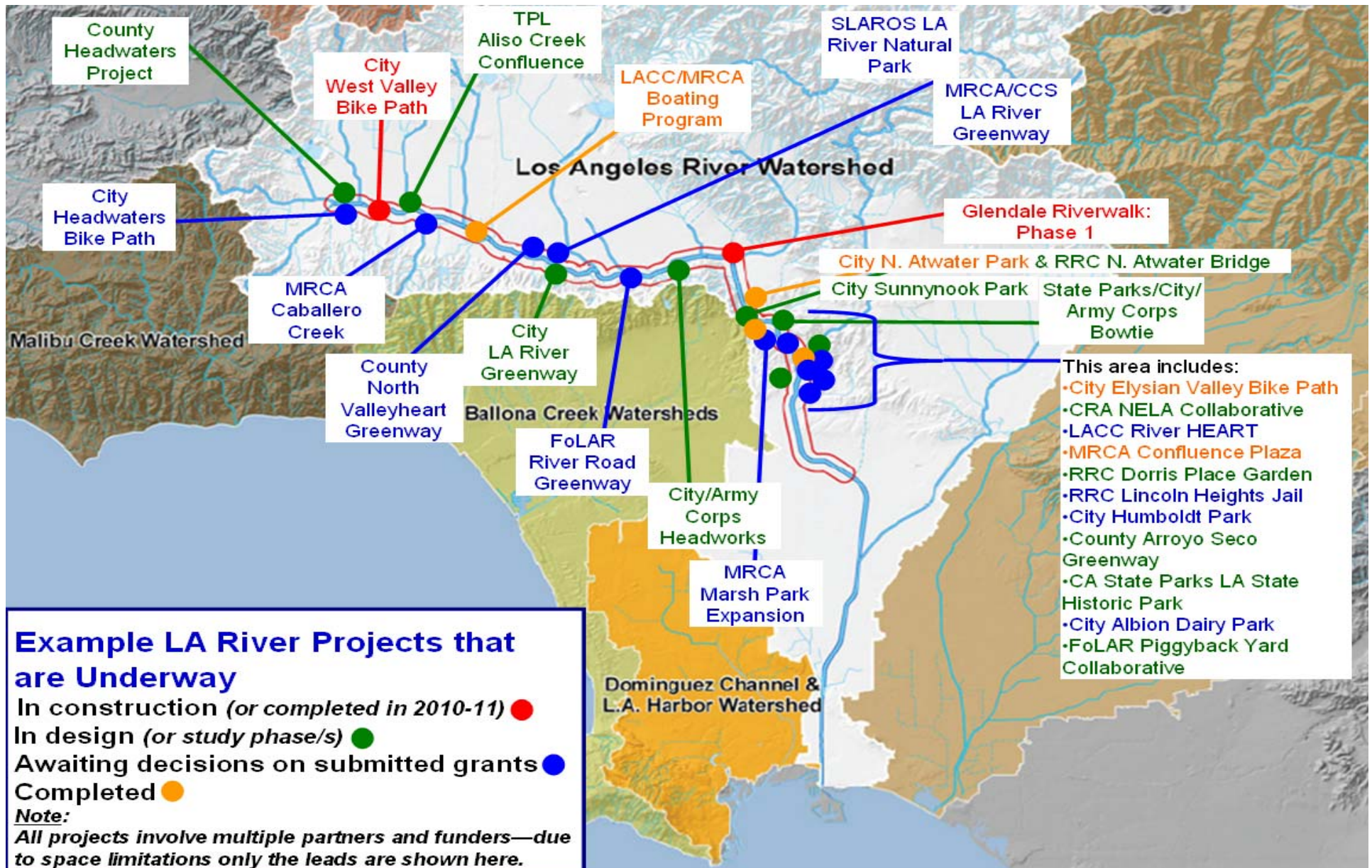


Concrete Change: LA River Ecosystem Restoration Feasibility Study

- 50%-50% cost-share between the US Army Corps of Engineers and the City of LA
- Completion expected 2013
- Focuses on 11-mile stretch of the river known as the “ARBOR” area
- Will propose strategies to restore ecological value by connecting up- and downstream and in-stream to outer-bank habitat
- Key sites: Verdugo Wash Confluence, Taylor Yard, Arroyo Seco, Cornfield/LA State Historic Park, Piggyback Yard
- The Study’s recommended project will be cost-shared at 65% (federal) to 35% local and is projected to cost between \$550M and \$1.6B

Area with
Restoration
Benefits and
Opportunities for
Revitalization





The Plan recommended more than 240 projects—many are underway now, involving the entire City family in partnership with the Federal government, the State of California, the County of Los Angeles, other cities, many nonprofit and private sector organizations, a diverse variety of stakeholder groups, and countless individuals...

PEOPLE



- LA River Corps starts work
- LA River Revitalization Corporation established
- LA River Cooperation Committee founded
- State committees established and hearings held
- LA River Urban Waters group comes together



PARKS



- North Atwater Park opened
- Aliso Creek Confluence underway
- Marsh Park expansion underway
- Humboldt Park underway
- Albion Dairy Park underway
- Bowtie Park receives funding
- Sunnynook Park in construction



PATHWAYS



- Elysian Valley Bikeway opened
- West Valley Bikeway under construction
- Bikeway in Studio City next to break ground
- LADOT prioritizing LA River Bikeway Network





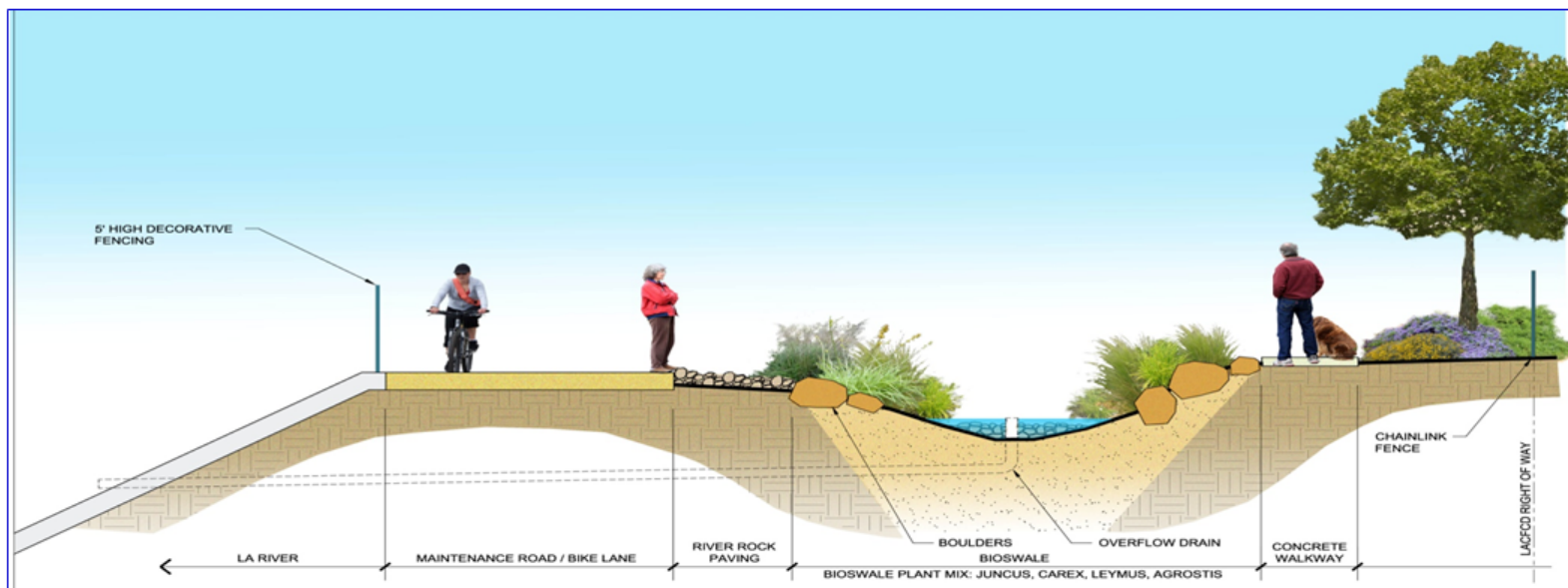
THE LOS ANGELES RIVER REVITALIZATION MASTER PLAN

OUR RIVER, OUR FUTURE

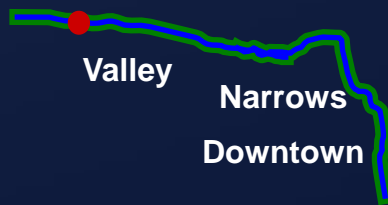
Partners



Los Angeles River Headwaters



Broke ground on September 19, 2012



Los Angeles River Revitalization Master Plan Priority Projects

Aliso Creek Confluence/Reseda River Loop,

Plan No. 29



- Operationalizes Sister River Agreement with Yarqon River in Tel Aviv
- Jewish Federation is key partner
- Jewish Home for the Aging is adjacent to the project
- Will create a park to anchor a recreational trail loop at a key LA River confluence
- Contains vibrant, active and diverse community garden—opportunity to build upon existing community energy and environmental stewardship
- Heschel Day School students participating in water quality monitoring and will create mural honoring Sister River partnership
- Trust for Public Land is lead; Mujeres de la Tierra led community engagement
- Mountains Recreation and Conservation Authority will operate and maintain



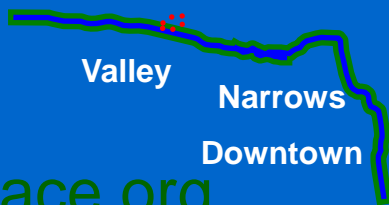


16 acres

East Side of River

Studio City

www.savelariveropenspace.org





Valley

Narrows

Downtown

Los Angeles River Revitalization Master Plan Priority Projects

Confluence Park

Plan No.183



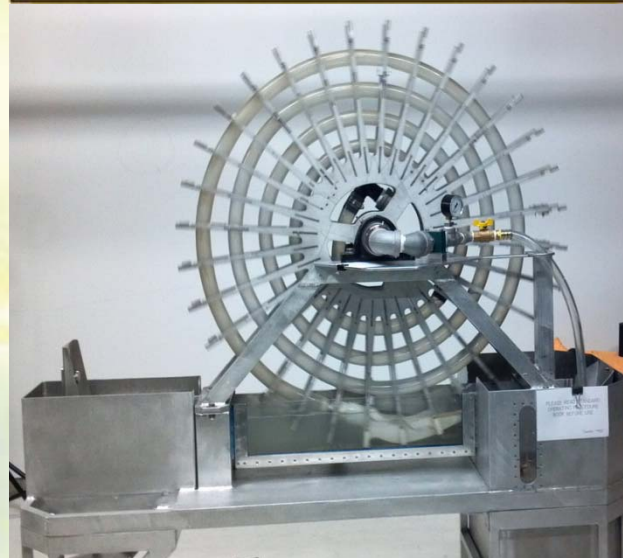
- Project of the Mountains Recreation and Conservation Authority
- Grand Opening 2011

Photo Source: www.arroyolover.blogspot.com



Siempre Agua: A Water Wheel for the Los Angeles River

Artist Lauren Bon is designing a water wheel to reconnect the River to the land. To be located on the west bank just south of the Broadway Bridge, La Noria will take water from the River and deliver it to the planned wetlands at the State Park across the street. This will be the first water wheel connected to the Los Angeles River in more than 100 years. Learn all about it and see the operating prototype.



METABOLIC STUDIO

1745 n. spring st. unit 4
los angeles, ca 90012
info@metabolicstudio.org
phone 323.226.1158

The Piggyback Group

Conceptual Site Plan



125 acres
East Side of River
Downtown LA



**Friends
of
the
Los Angeles
River**

Pro Bono Design Collaborative

C S A O
CHEE SALETTE ARCHITECTURE OFFICE

Pro Bono Technical Advisors

MIA LEHRER
+associates
landscape architecture

Tt
TETRA TECH

**MICHAEL
MALTZAN
ARCHITECTURE**



**PERKINS
+ WILL**





US Army Corps allows first-ever boating program in LA River (August 2011)

**Friends
of
the
Los Angeles
River**



**US Army Corps
of Engineers**
Los Angeles District



Celebration at the newest river park: North Atwater—opened in 2012



Ruth Coleman, Director of CA State Parks; Gen. Michael Wehr, South Pacific Division Commander, US Army Corps of Engineers; Omar Brownson, Executive Director, LA River Revitalization Corporation; Councilman Tom LaBonge; USDOL Secretary Ken Salazar; Mayor Villaraigosa; Congresswoman Lucille Roybal-Allard; Congressman Adam Schiff; Councilman Reyes (at North Atwater Park on the LA River on January 12, 2012)

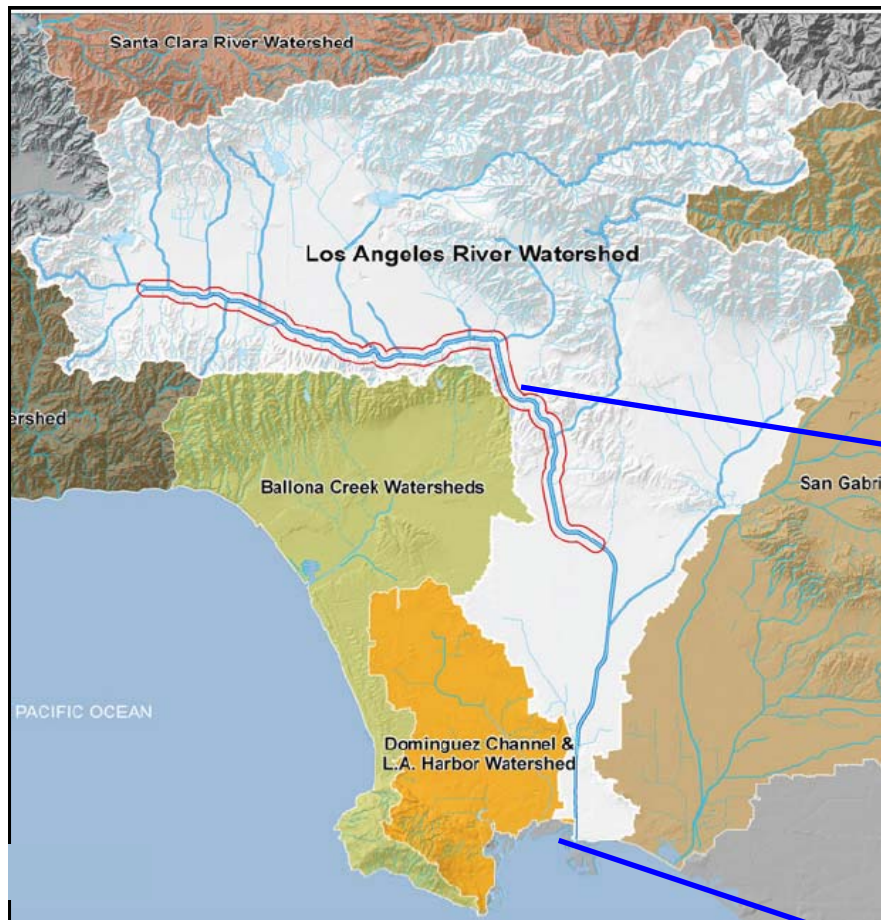
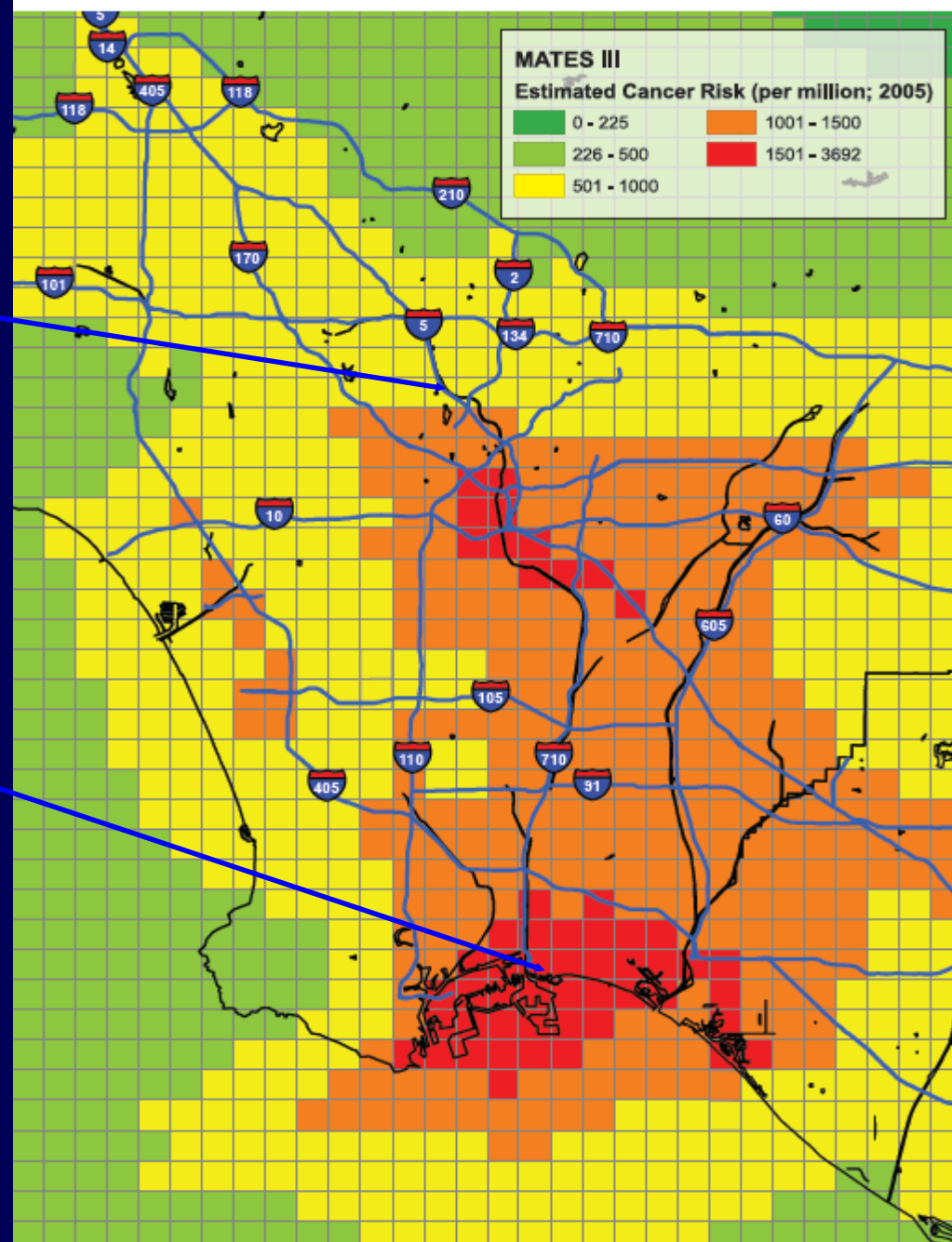
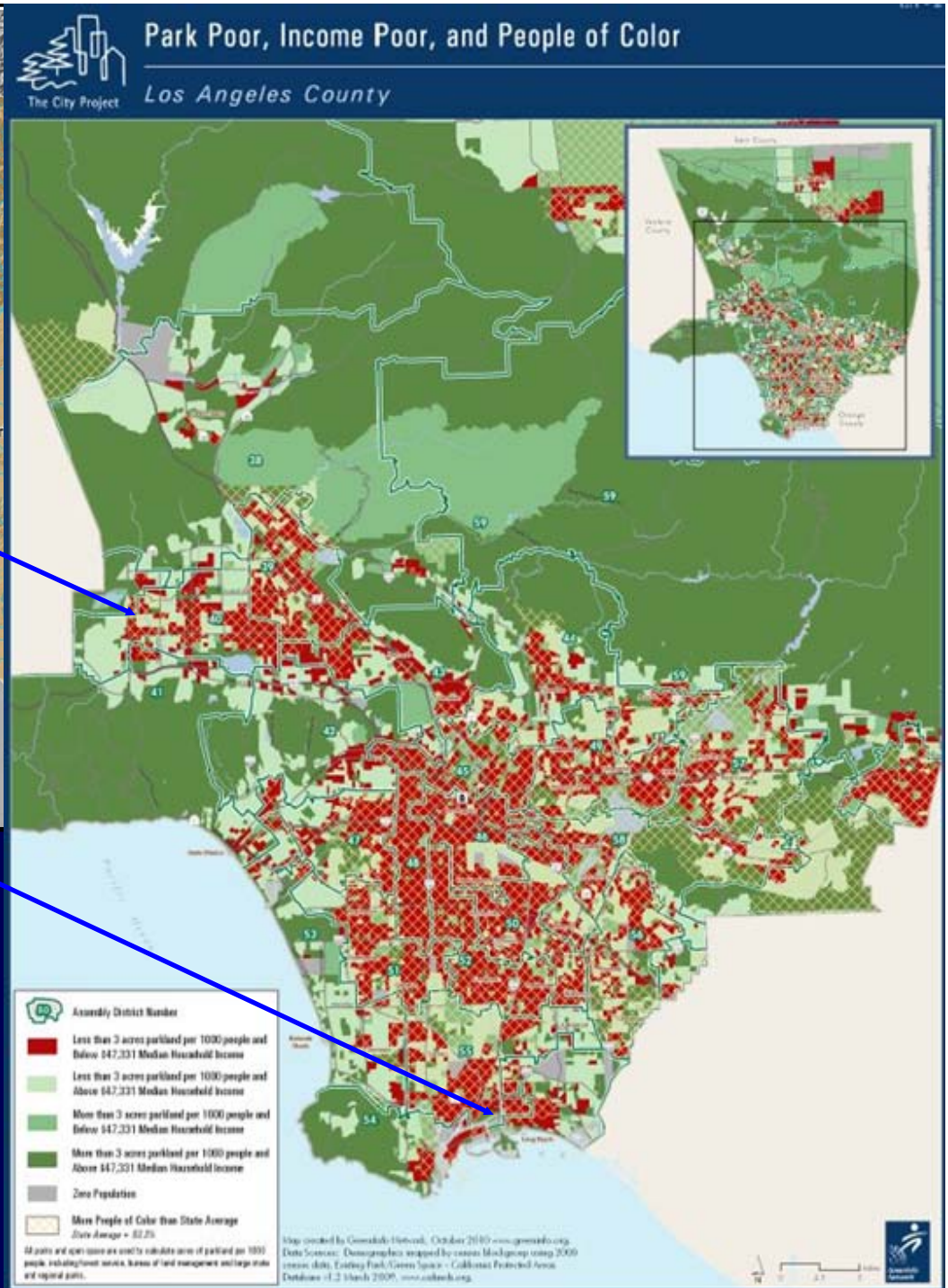
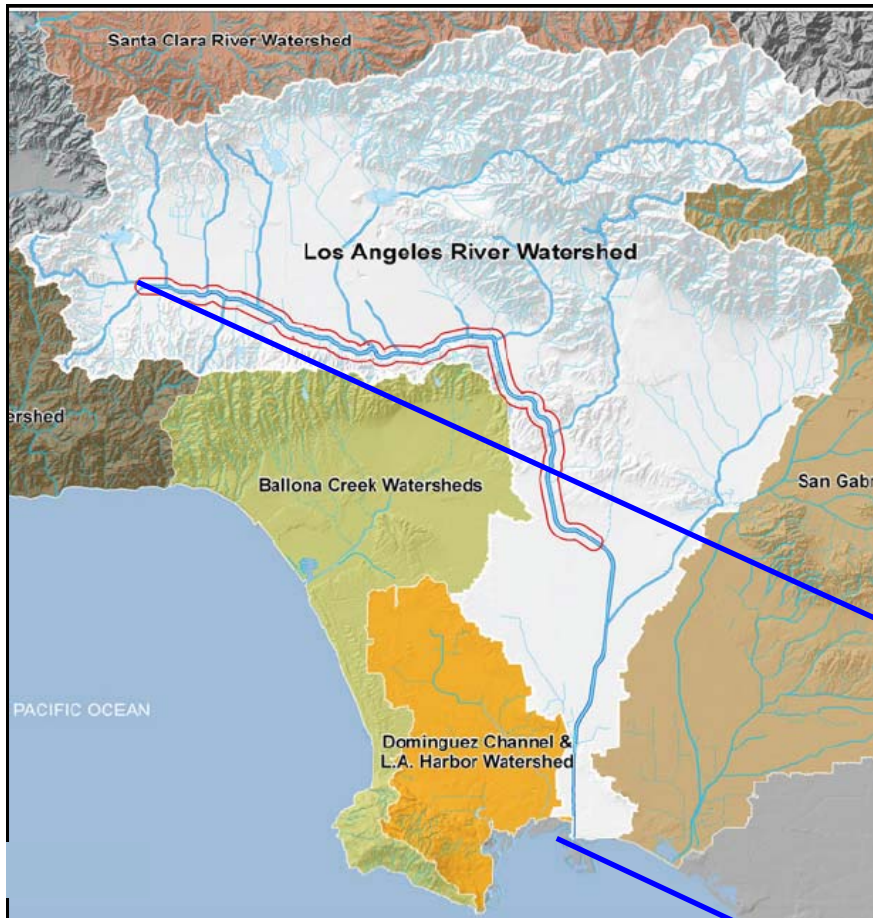


Figure 1. Los Angeles' Epicenter of Cancer Risk



A significant portion of the LA River falls within the “Epicenter of Cancer Risk” in terms of air toxics.

Source: *Hidden Hazards: A Call to Action for Healthy, Livable Communities*, Los Angeles Collaborative for Environmental Health and Justice, Liberty Hill Foundation, 2010



The LA River flows through many low-income communities of color that lack access to parks.

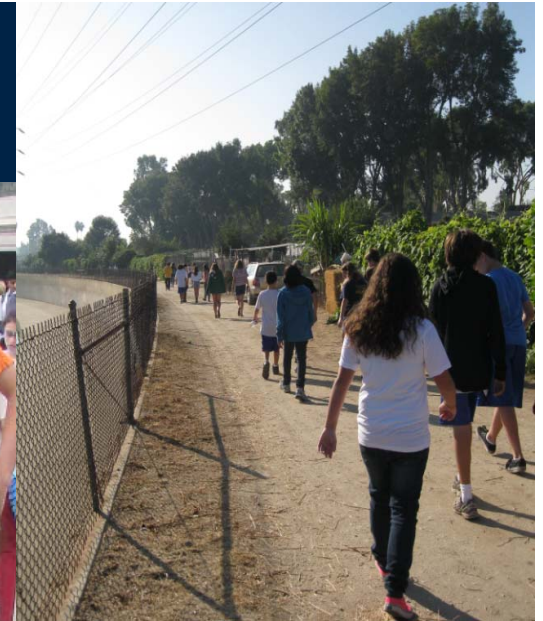
Source: The City Project, www.cityprojectca.org



LA River Revitalization



Photo: FoLAR



Real Progress for LA's Future



The LA River Needs All of Us:

Millions of People!

300 Street Interfaces

(just in the City of LA!)

2200 Storm Drains

102 Miles of Riverfront

Dozens of Neighborhoods 870 Square Mile Watershed



www.lariver.org



Thank You

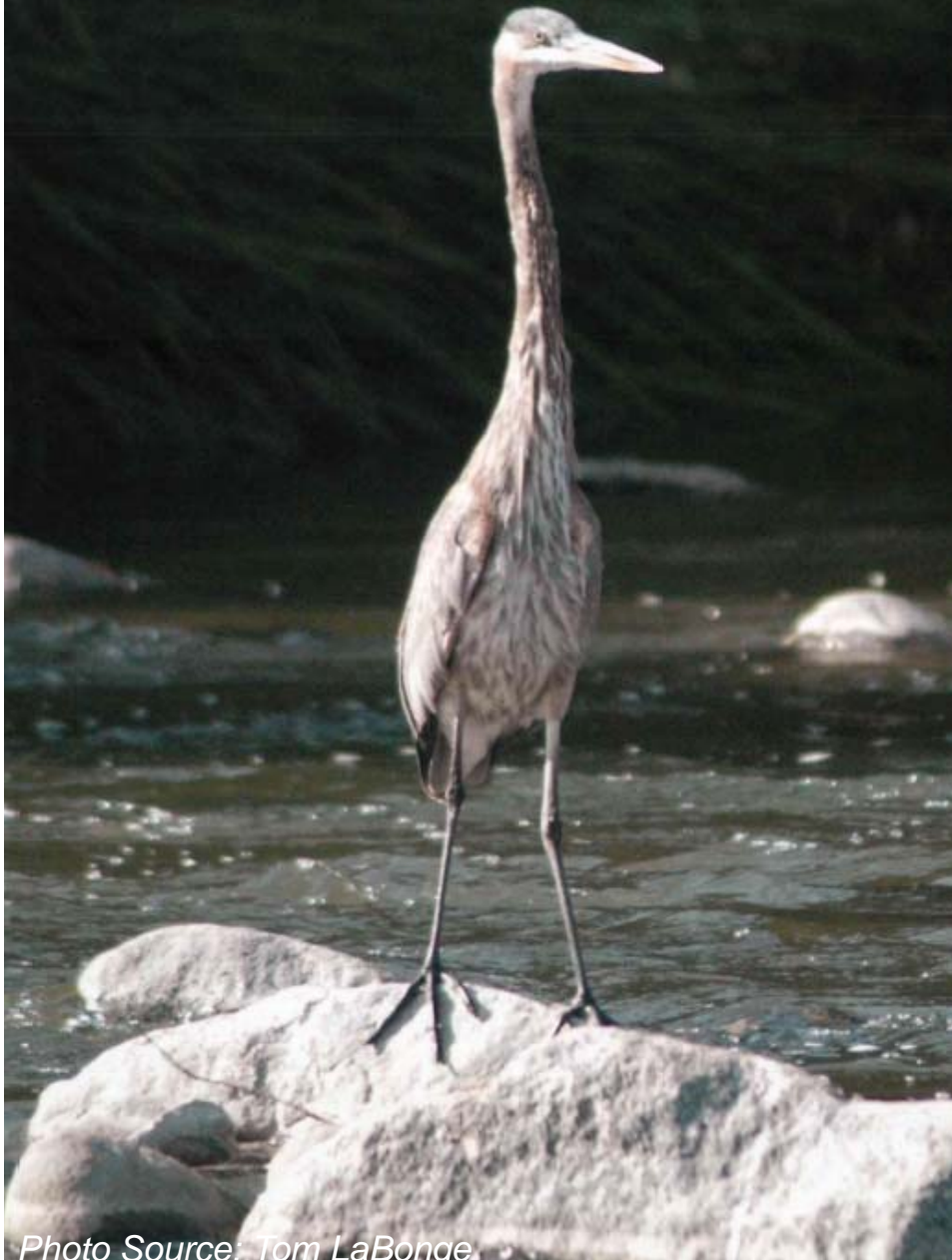


Photo Source: Tom LaBonge

Contact

Carol.Armstrong@lacity.org
(213) 485-5762

Michael.Affeldt@lacity.org
(213) 485-5733

Megan.Whalen@lacity.org
(213) 485-4560



Photo Source: MRCA