



Southern California Water Dialogue:
Sustainable Groundwater Management

April 23, 2014

Presentation Outline

- Outreach Efforts
- Draft Findings
- Draft Recommendations
- Challenging issues
- Next steps



Outreach Efforts



- Stakeholder Steering Committee
- Multiple Interest Group meetings
- Individual Stakeholder discussions
- State Agency discussions
- State Administration and Legislative discussions

Draft Findings



- Groundwater resources are essential to California's economy, environment and public health and safety
- Current groundwater management trends are not sustainable
- Groundwater is most effectively managed at the local and regional level ["Subsidiarity"]
- Local groundwater management entities require new authorities



Draft Findings (cont.)



- Clear and meaningful state roles are needed to protect state interests
- Sufficient time is necessary to achieve sustainability
- Funding is needed to support sustainable groundwater management
- Groundwater management needs to be inclusive and transparent
- Respect for water rights is fundamental to groundwater management



Sustainable Groundwater Management Draft Recommendations



1. Adopt a definition of sustainable groundwater management
2. Develop a prioritized statewide program covering all subbasins
3. Establish local groundwater management entities
4. Provide local entities with sufficient groundwater management authorities

Sustainable Groundwater Management Draft Recommendations (cont'd)



5. Develop local sustainable groundwater management plans
6. Establish a clear and coordinated state role for assistance, oversight, and enforcement
7. Reduce time and cost of adjudications
8. Establish funding for groundwater management

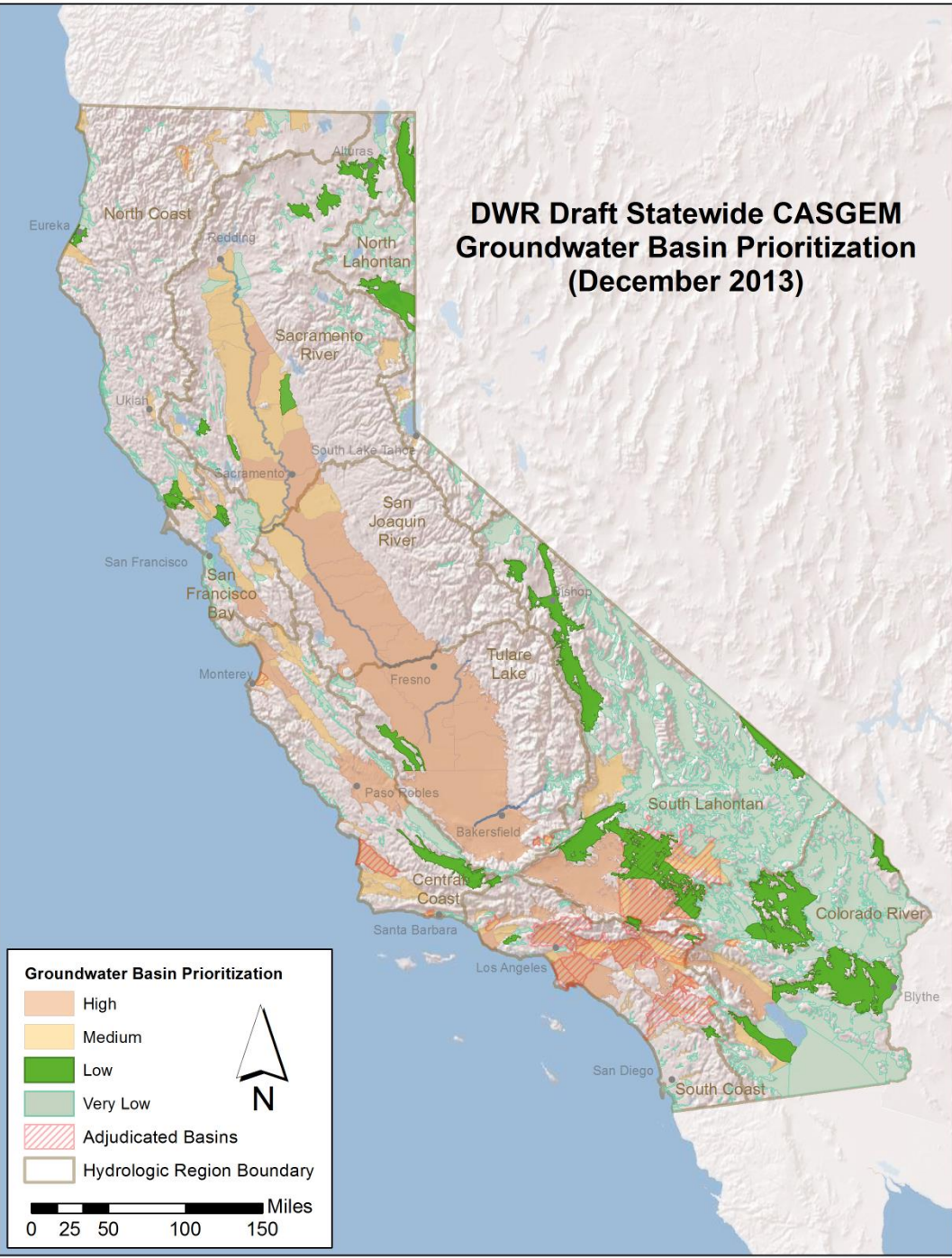
Definition of sustainable groundwater management



To protect the resource for future generations, sustainable groundwater management means the management of a groundwater subbasin to provide for multiple long-term benefits without resulting in or aggravating conditions that cause significant economic, social, or environmental impacts, such as:

- long-term overdraft*
- land subsidence*
- ecosystem degradation*
- depletions from surface water bodies*
- water quality degradation*

DWR Draft Statewide CASGEM Groundwater Basin Prioritization (December 2013)

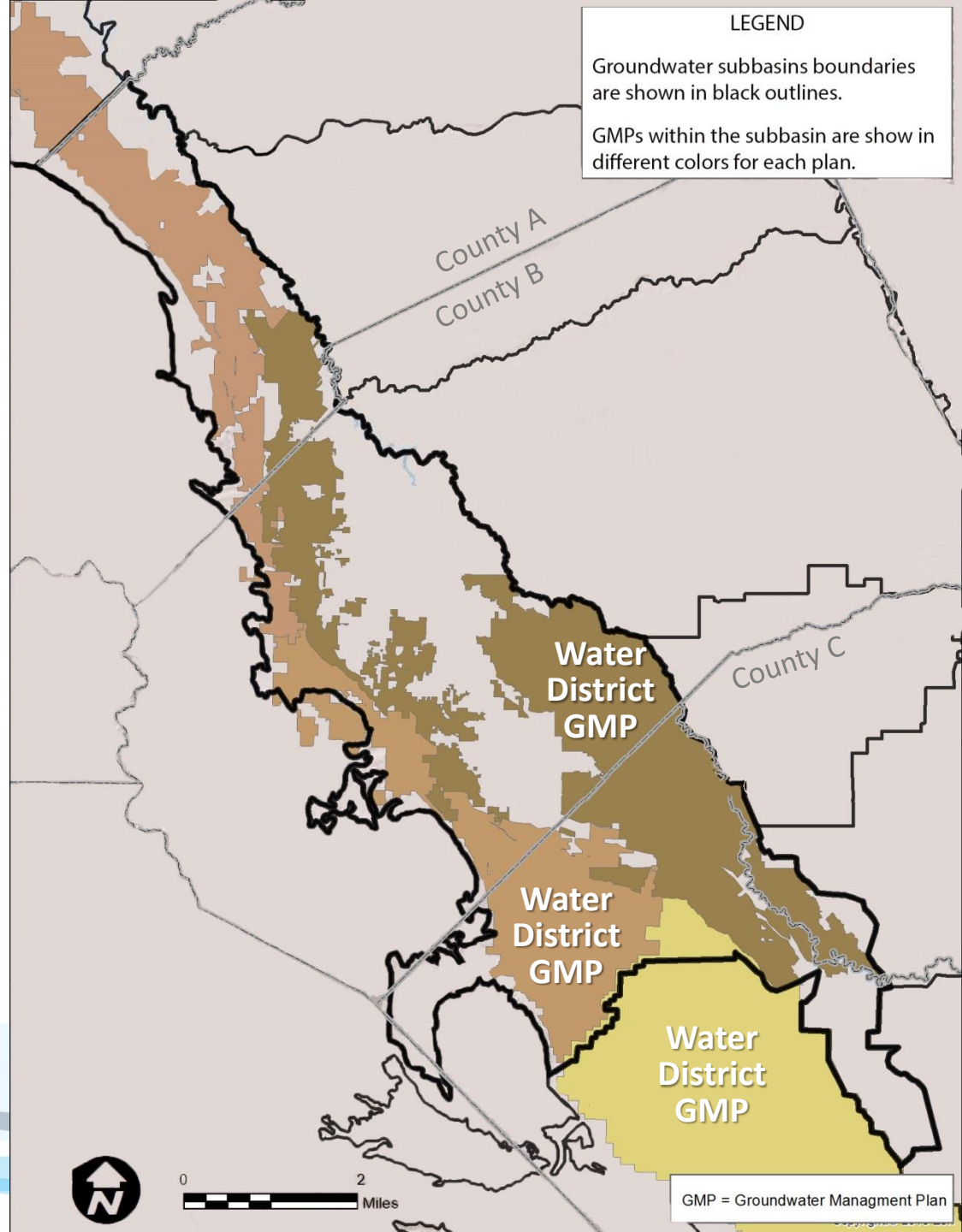


Groundwater Basin Prioritization

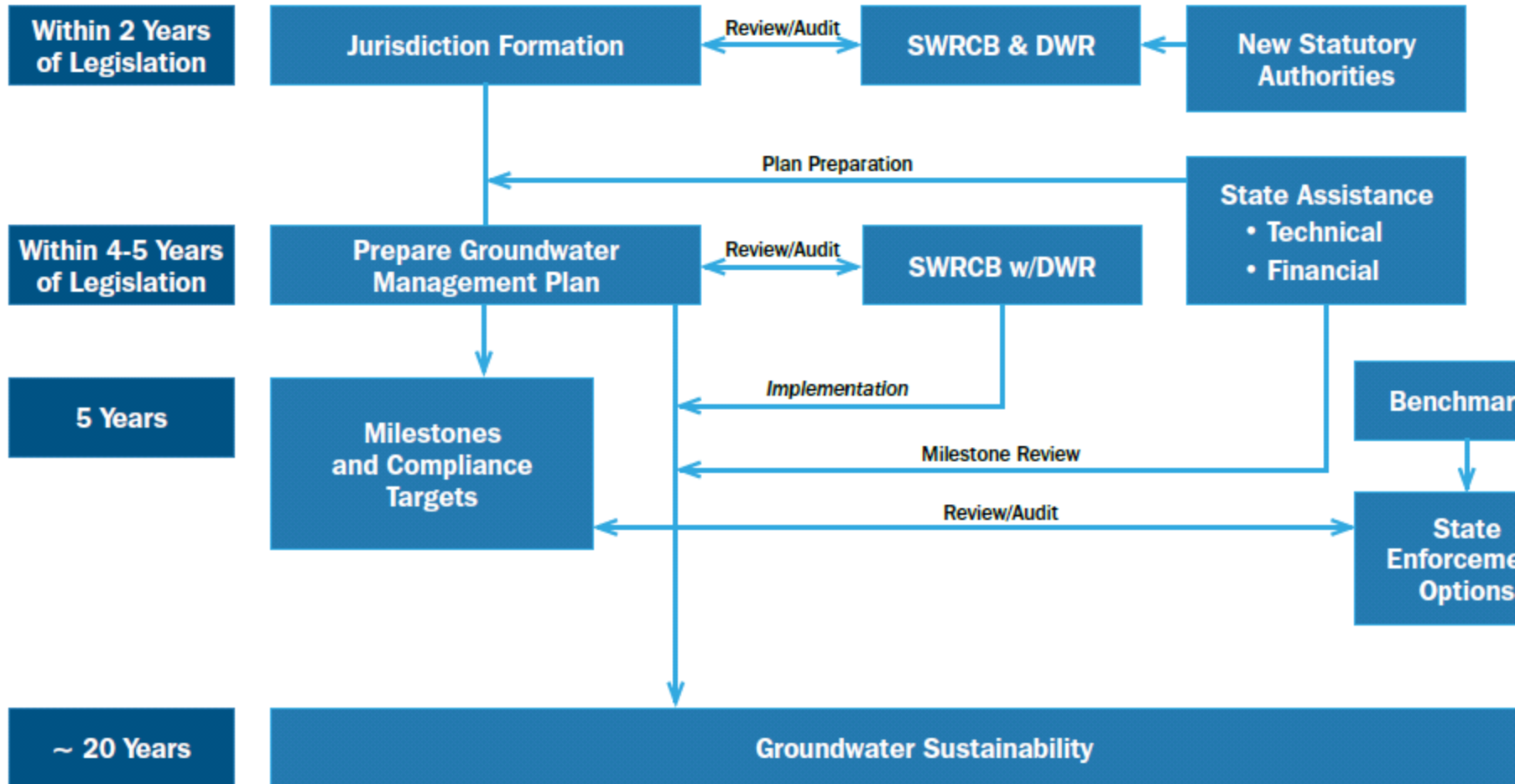
- High
- Medium
- Low
- Very Low
- Adjudicated Basins
- Hydrologic Region Boundary

Miles
0 25 50 100 150

LGME Jurisdiction Formation



CONCEPT FOR: Groundwater Act of 2014 for *priority basins*



Challenging Issues

- Establishing the jurisdiction
- Protecting of water rights
- Managing for water quality
- Ensuring inclusiveness and transparency
- Integrating water and land management
- Preventing vs. reacting (tipping points)



Moving Forward

- 100 years to get here
- Critical issue for everyone
- Must avoid the slow moving disaster
- Now is the time

