

IRWD's State Mandated Reduction

Southern California Water Dialogue

July 22, 2015



Presentation Overview

- IRWD's Mandated Reduction Target
- Challenges Faced
 - Significant Growth
 - Extensive Recycled Water Distribution System
- Investments in Reliability
 - Extraordinary Supply
 - Indirect Potable Reuse
- June 2015 Reporting
- How IRWD Will Meet its Goal

IRWD's Mandated Reduction

- 16 % reduction in potable production from 2013 baseline
- Based on average residential GPCD of 91 for July – September 2014
- Total reduction required = **7,565 acre-feet**
- Assumes summer provides greatest opportunity to achieve savings from outdoor potable use
- Assumes the non-residential sector has similar or greater outdoor potable savings opportunities as residential sector

Challenges Faced

- **Significant Growth**
 - 7% Growth Rate; one of most rapidly growing areas
 - Key to maintaining strong economy
 - No adjustment for growth in potable production
- **Extensive Recycled Water Distribution System**
 - Majority of non-residential and multi-family outdoor use served by recycled water
 - (Only 3 medians in Irvine served by potable irrigation)
 - Limited opportunity for IRWD to achieve savings reduction from discretionary potable outdoor use

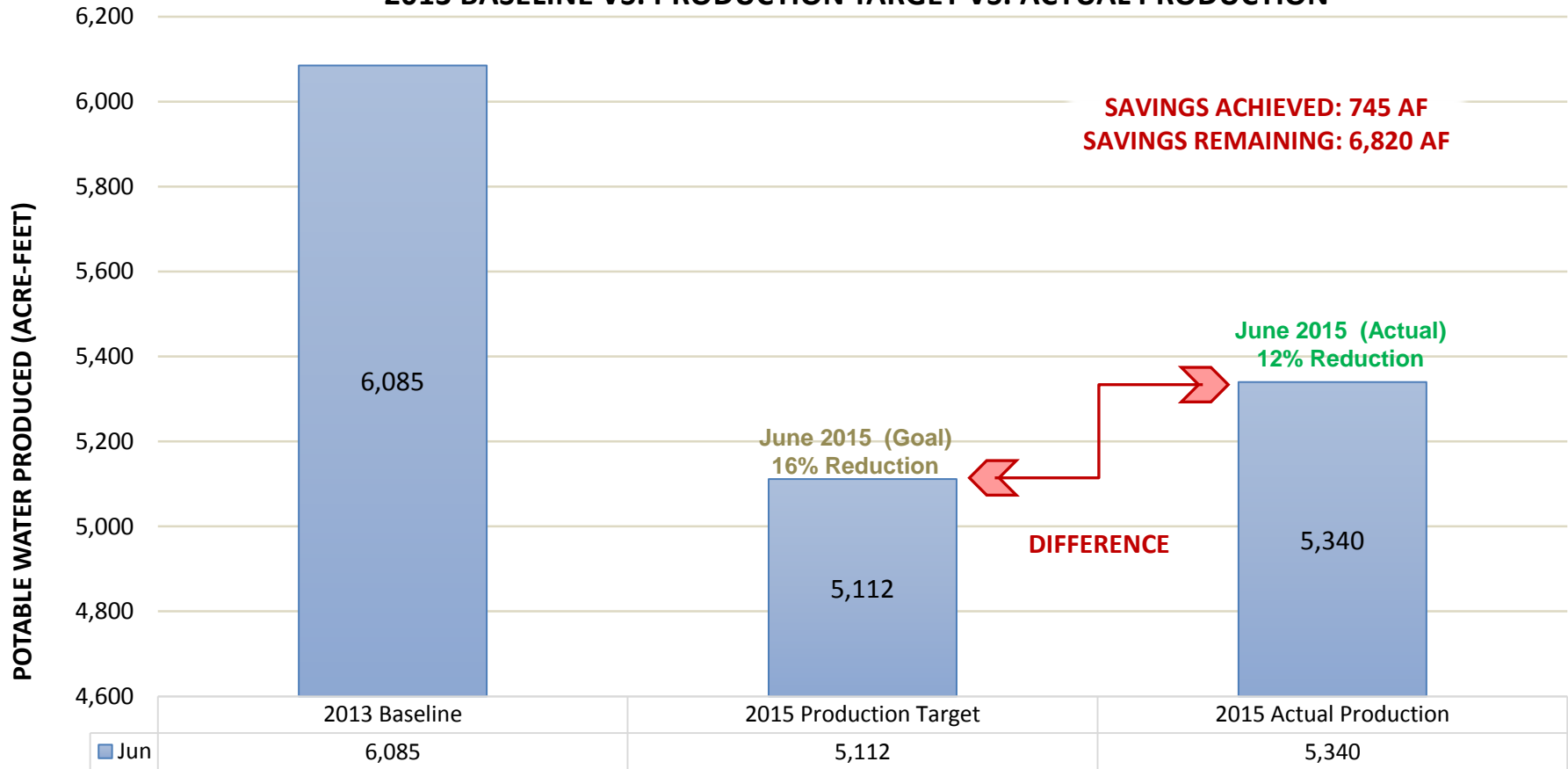
Investments in Reliability – No Credits Given

- **Extraordinary Supply**
 - IRWD's water banking program
 - Water is stored to provide additional reliability in drought or system disruption
- **Indirect Potable Reuse**
 - Orange County made significant investments in the Ground Water Replenishment System (GWRS)
 - June 2015 GWRS supplied 34% of local groundwater production countywide
 - GWRS provided 21% of IRWD's potable production

June 2015 - Potable Water Production

No adjustment made to account for IRWD's 7% growth from June 2013 to June 2015.
 With adjustment, savings for June reduction in potable production would be 18%.

**IRWD POTABLE WATER PRODUCTION
 2013 BASELINE VS. PRODUCTION TARGET VS. ACTUAL PRODUCTION**

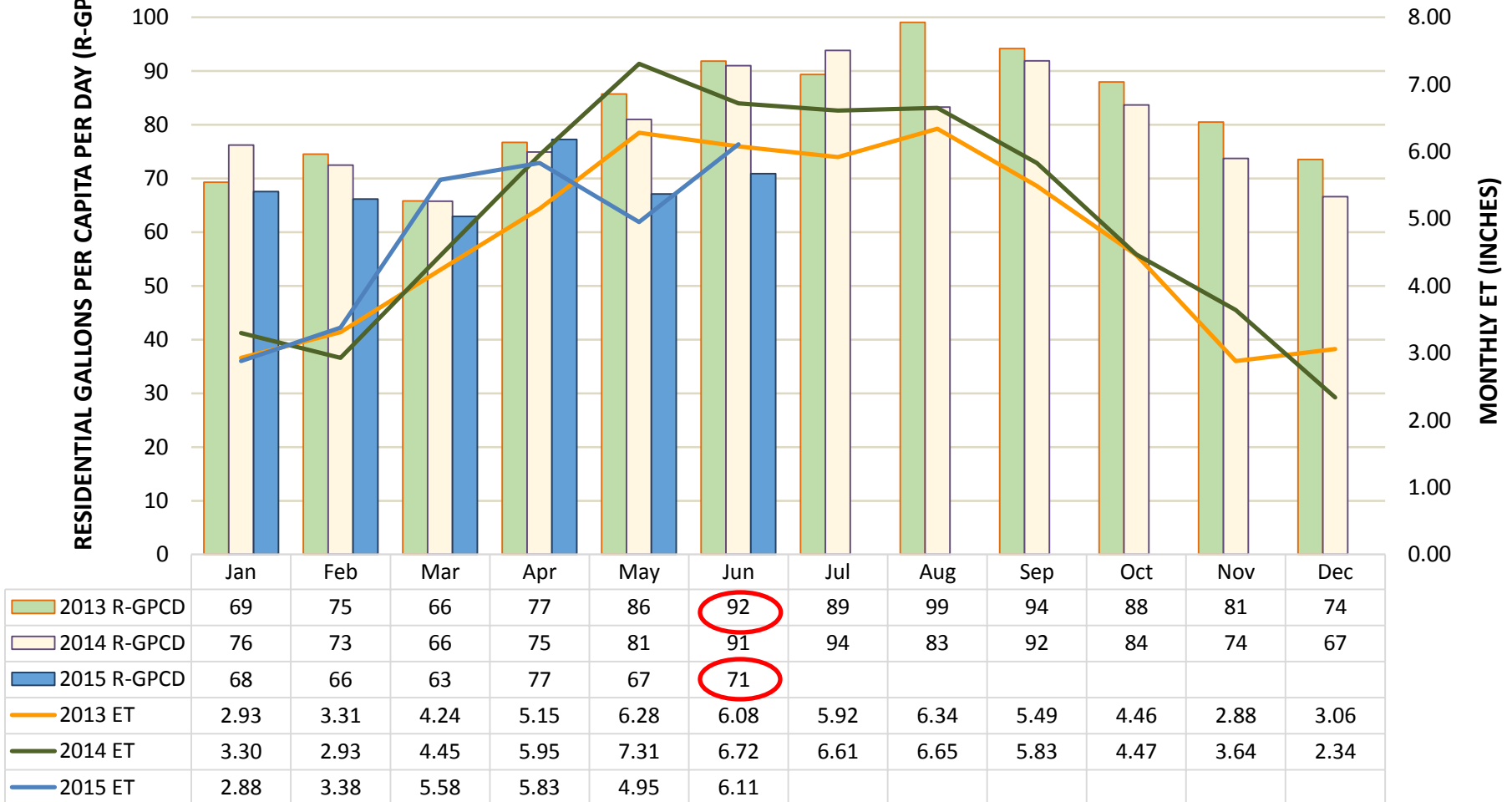


RUNNING TOTALS FOR BASELINE, TARGET & ACTUAL PRODUCTION (ACRE-FEET)

Residential Gallons Per Capita per Day and ET

22% reduction in residential per capita comparing June 2013 with June 2015.

IRWD MONTHLY RESIDENTIAL-GPCD & ET



How IRWD Will Meet its Target

Rate Changes:

- Reduced outdoor allocations for potable water by 30%
- Based on drought tolerant plants and drip
(ET Adjustment factor reduced: 0.9 to 0.6)
- Potential second step rate increase in October 2015
- Stage 2 Drought Declaration



How IRWD Will Meet its Target

Key Conservation Initiatives:

- “Brown is the New Green”
- Reduce Outdoor Watering by 50%
- Drought Response Center
- Increased Conservation Incentives
- Targeted efficiency program to commercial customers



How IRWD Will Meet its Target

District-wide Initiatives:

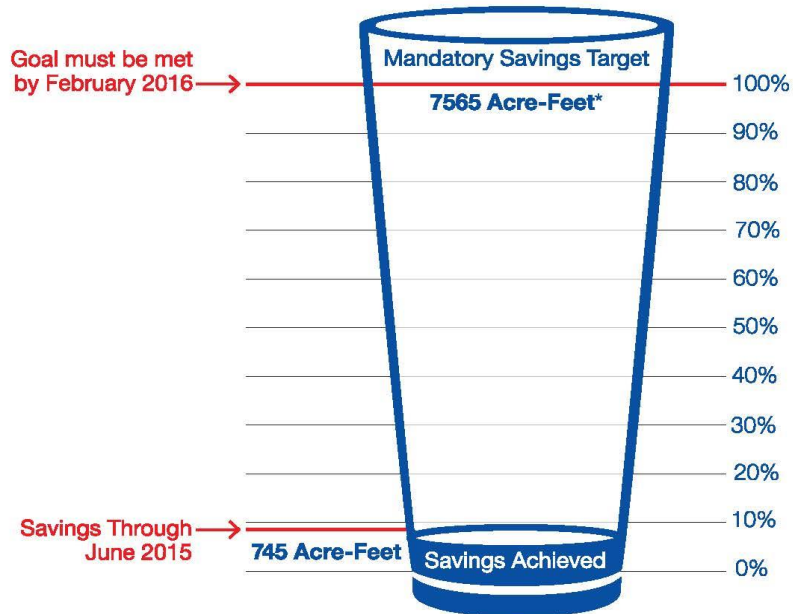
- Drought team
- Operational changes
- Expansion of recycled water uses
- Targeted coordination with largest users (e.g., cities and key customers)



Meeting the Goal

Working Together to Achieve the Goal

IRWD Drinking Water Savings
(Through June 2015)



*One acre-foot = 325,851 gallons

Paul Cook
General Manager

cook@irwd.com

949 453-5590

