



The Role of Philanthropy - Community Foundations - in the Colorado River Basin

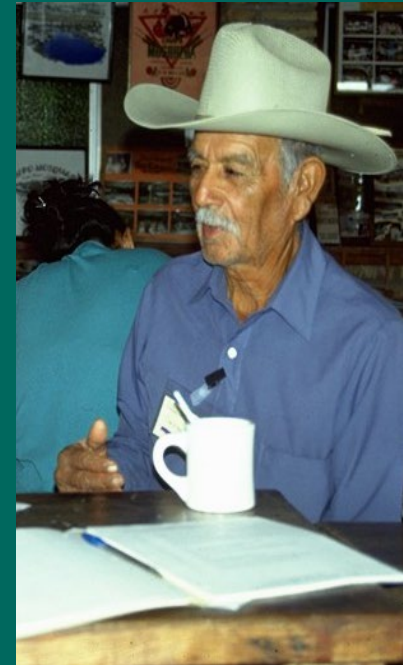
Yamilett Carrillo, Ph.D.



“ Before, there used to be a lot of water,
Everything was good, there were beavers,
We gathered herons’ eggs to eat,
There were plenty of deer, fish, birds,
We cultivated squash, watermelon, yurimuri beans...

And with time, everything changed,
The river disappeared,
The fish disappeared,
People suffered much...

We dug the riverbed to find water,
And we found only salty water to drink.
The river was gone...”



Onesimo Gonzalez,
Cucapa Tribe Chief,
Mexicali, 1999

The Role of Philanthropy in the Colorado River Basin

Conservation and Society 19(3): 190-194, 2021

Short communication

Can Philanthropy Enable Collective Action to Conserve Rivers? Insights from a Decade of Collaboration in the Colorado River Basin

Gina G. Gilson^{a,#}; Dustin E. Garrick^{a,b}

^aSchool of Geography and the Environment, University of Oxford, Oxford, UK

^bSchool of Environment, Resources and Sustainability, University of Waterloo, Ontario, Canada

[#]**Corresponding author. e-mail:** gina.gilson@gtc.ox.ac.uk

Abstract

Philanthropy plays an important but often invisible role in conserving rivers. We examine the influence of philanthropy on collective action and collaborative governance within the Colorado River Basin, a region where philanthropic support has been growing to achieve conservation objectives. Our short communication combines

Role of Philanthropy -Community Foundations - in the Colorado River Basin

- Community Foundations are dedicated to improving the lives of people in a defined local geographic area.
- They bring together the financial resources of individuals, families, and businesses to support effective nonprofits in their communities.
- Attract a diversity of funding even from outside the region, pooling resources to address critical issues (i.e., their region's water security).
- Community Foundations have strongest connections to all stakeholders in a region.





Colorado River Headwaters Byway - Maricopa County, AZ
mwa.dot.gov



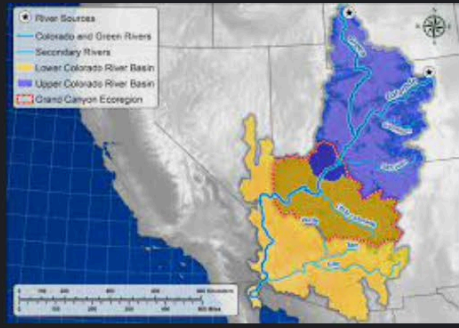
Part 2: Explore the Colorado River Basin
serc.carleton.edu



Map Gallery - Colorado River Dist...
coloradoriverdistrict.org



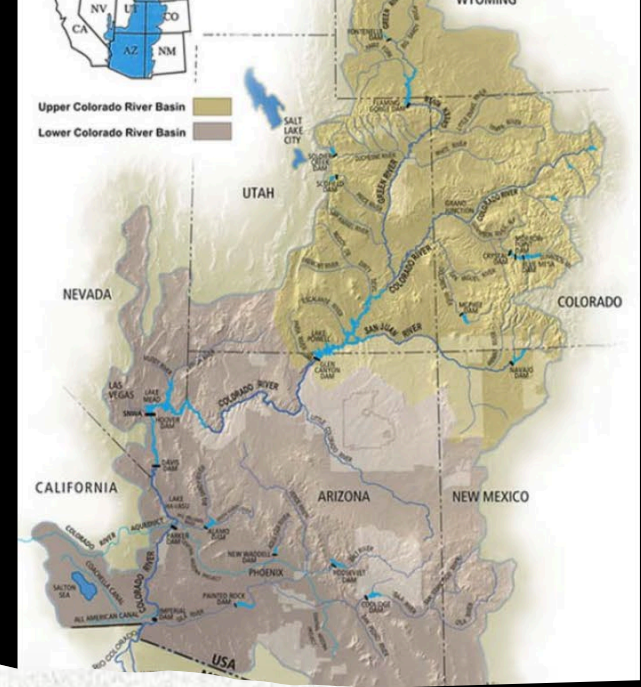
Part 2: Explore the Colorado River Basin
serc.carleton.edu



General map of the Colorado River Basin ...
researchgate.net



Colorado river, Map, Lakes in california
pinterest.com



Water Managers and Community Foundations can further collaborate in the CR Basin.

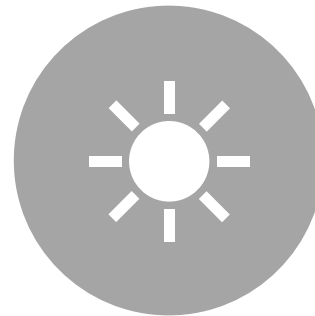
- Community Foundations play a key role in local disaster response.
- Support information flow and civic engagement
- Can further help change local perception and actions: drought is impacting each CR community.
- Co-invest in informing, mitigating, and adapting to impacts region by region...because drought will impact all regions in the basin.



The Environmental Initiatives of San Diego Foundation prioritize leadership and philanthropic investment to guide our region to a more sustainable path of economic growth and a higher quality of life.



OUTDOOR ACCESS



CLIMATE & EQUITY
INITIATIVES



BINATIONAL
RESILIENCE INITIATIVE

BINATIONAL
RESILIENCE
INITIATIVE



INICIATIVA DE
RESILIENCIA
BINACIONAL

Identifying and leveraging our strengths in the Cali Baja region to adapt to the effects of climate change and thrive.

Why as a binational region?

- Freshwater, groundwater, and coastal resources are fluid across boundaries
- Water security determines food security and economic prosperity
- Social and economic interconnectedness is as highest along the US-MX border.
- This is a unique strength for our region to adapt and thrive.

Thank You

Yamilett Carrillo, Ph.D.
Senior Program Manager
Binational Resilience Initiative (BRI)
ycarrillo@sdfoundation.org
858.500.2026

[SDFoundation.org](https://www.sdfoundation.org)

