



# **Southern California Water Dialogue**

September 27, 2023

Stephan Tucker

***SECURING OUR WATER FUTURE TODAY***

# WRD is a special government district that manages groundwater



WRD monitors and replenishes the groundwater in the Central & West Coast Basins



Groundwater meets nearly half of the demand within the WRD service area of southern Los Angeles County

WRD SERVES:  
420 sq. miles, 43 cities, 4 million residents



# There are about 300 active production wells in WRD's service area which are owned and operated by entities with groundwater rights

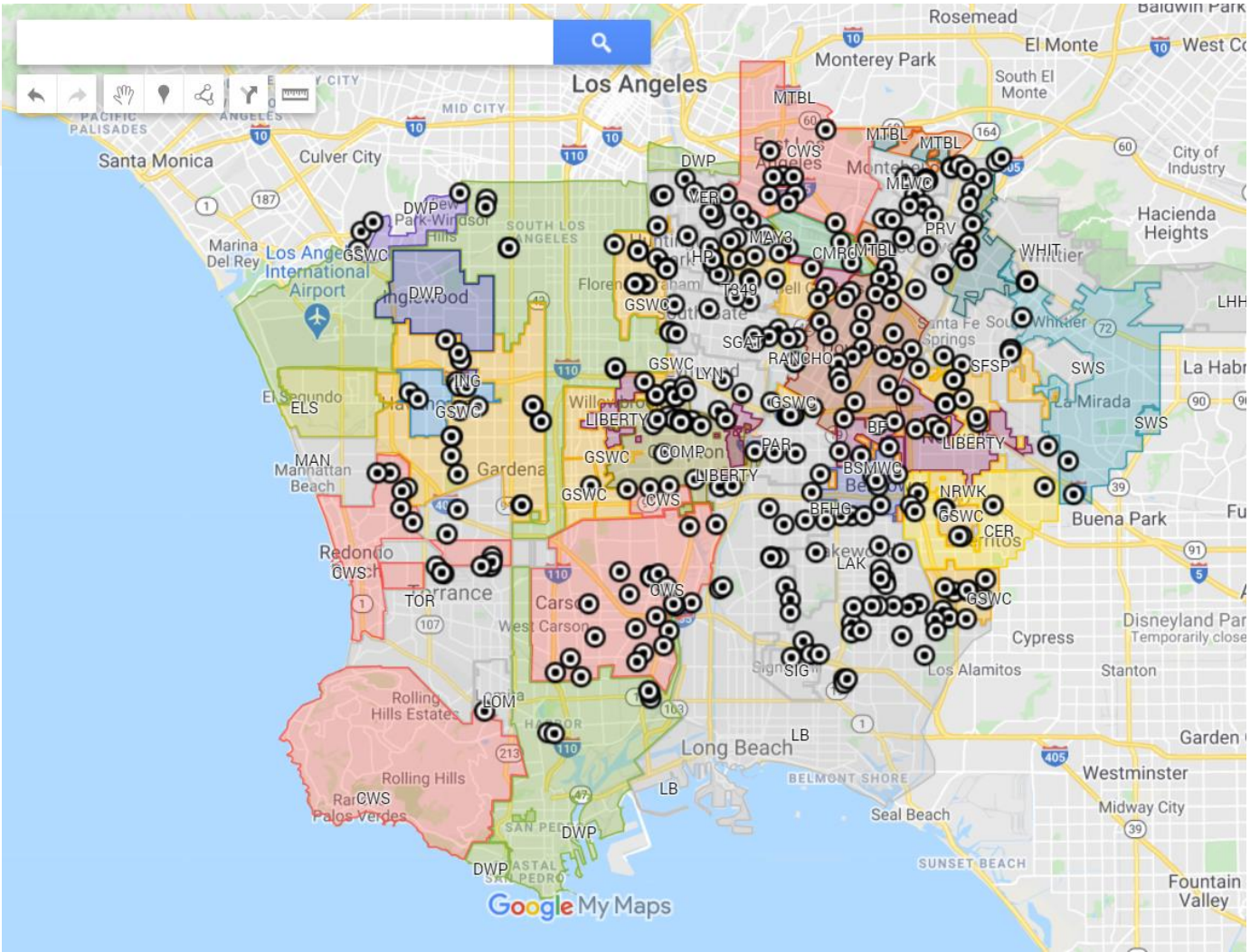
Purveyor/Well Overlay

18 views

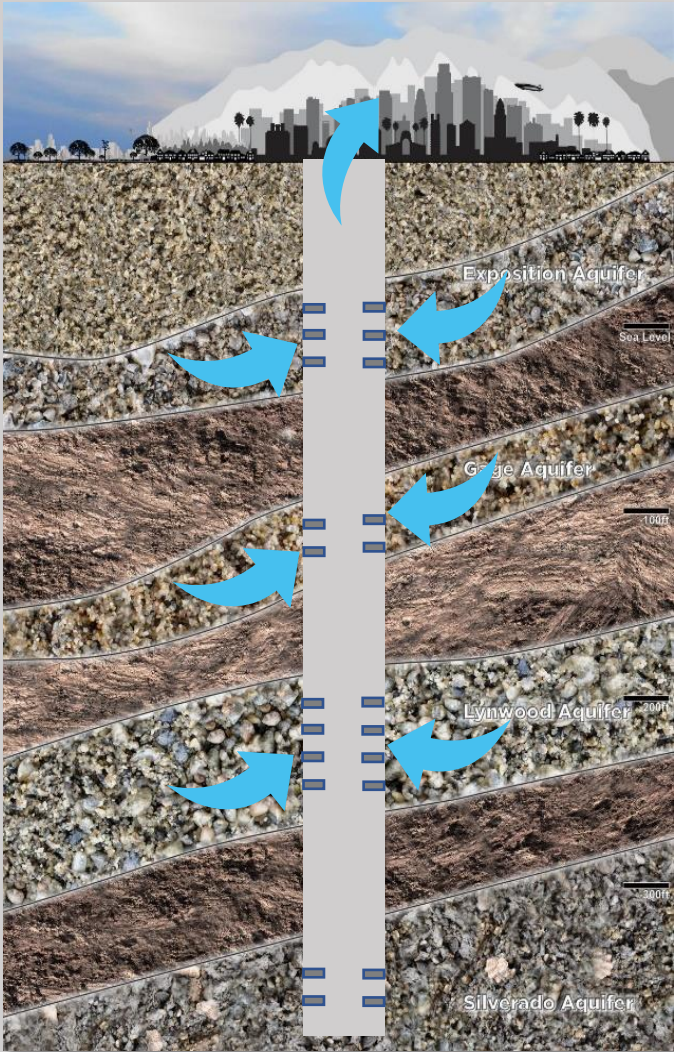
All changes saved in Drive

Add layer Share

- GSWC (18)
- LIBERTY (10)
- MTBL (8)
- BF (7)
- CWS (7)
- NRWK (7)
- DWP (5)
- CER (3)
- SGVWC (3)
- BGDN (2)
- ING (2)
- SWS (2)
- BFHG (1)
- BSMWC (1)
- CAW (1)
- CMRC (1)
- COMP (1)
- DOW (1)



Production Well



Ex: City of Bell Gardens has pumping rights for 1,914-acre-feet (623M gallons) of water per year



# WRD manages groundwater through multiple roles



Replenishment



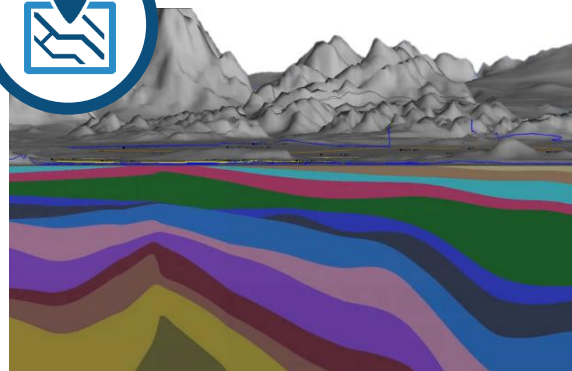
Monitoring



Cleanup



Water Recycling



Basin Modeling



Regional Watermaster



# WRD operates three water treatment facilities which benefit the basins

*Albert Robles Center  
for Water Recycling &  
Environmental Learning*



*Leo J. Vander Lans  
Advanced Water  
Treatment Facility*



*Robert W. Goldsworthy  
Groundwater  
Desalter*

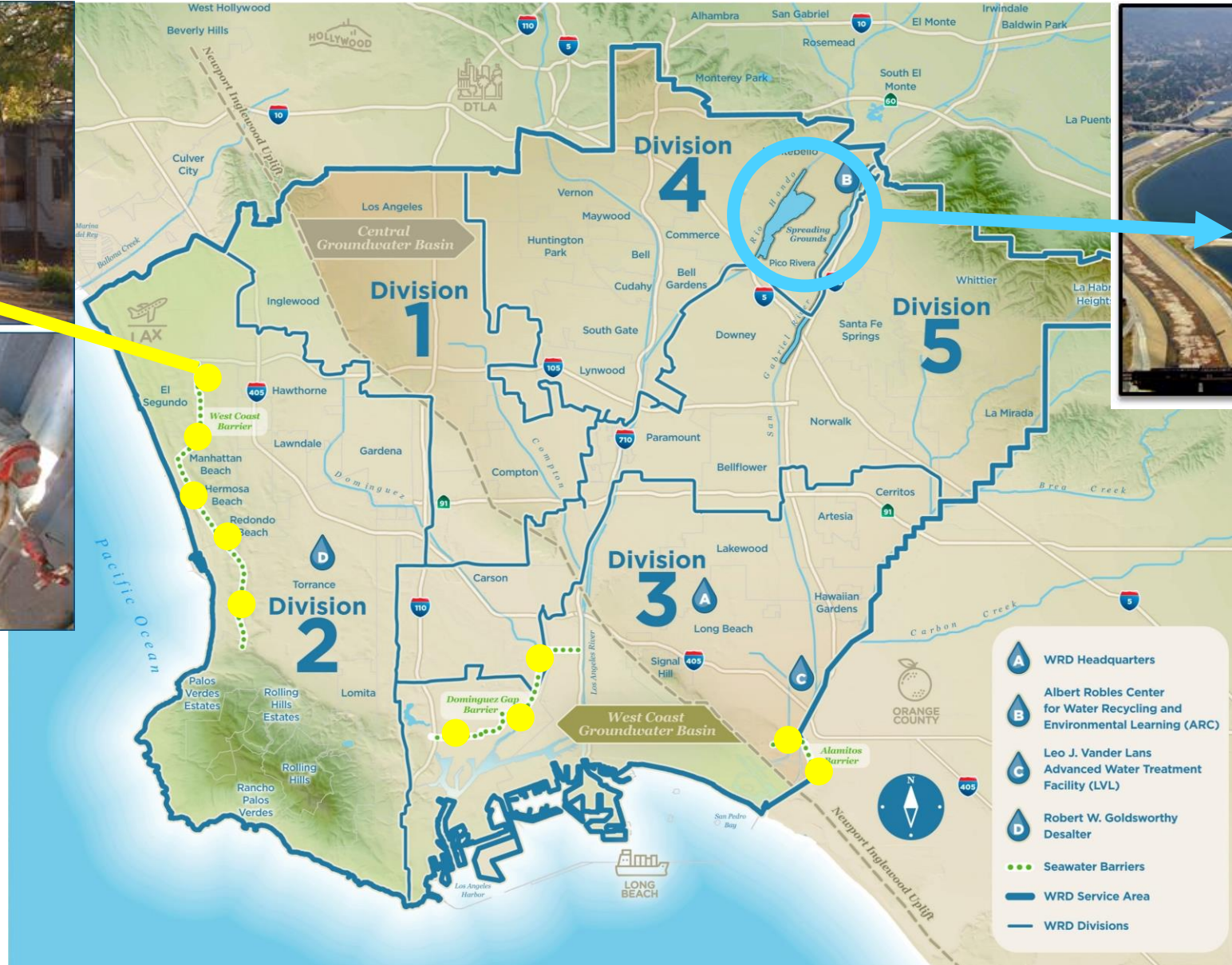




# WRD replenishes the basins using two important LA County infrastructure systems



Seawater Barrier  
Injection Wells



San Gabriel &  
Rio Hondo  
Spreading Grounds





# Different water sources are used to replenish the basins



Stormwater



Imported Water



Recycled Water

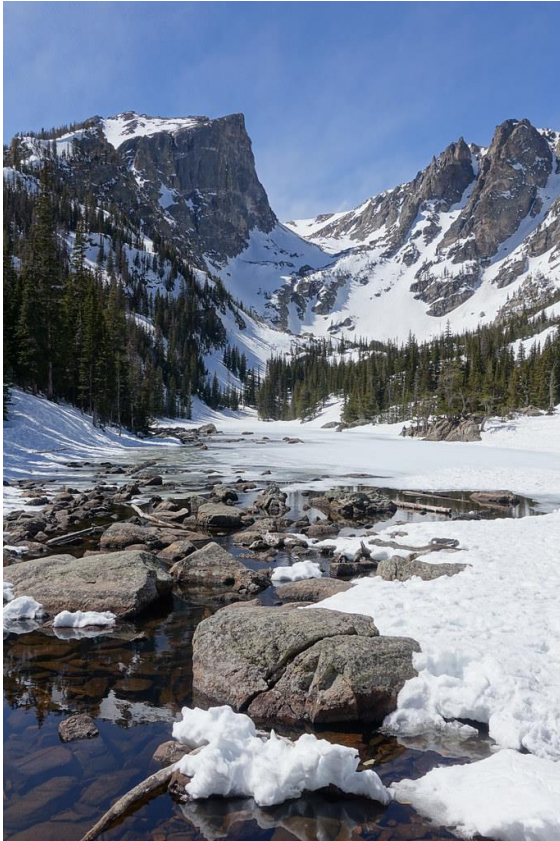




# Climate change has impacted the traditional water supply for replenishment



Imported Water is largely snowmelt transported from other watersheds

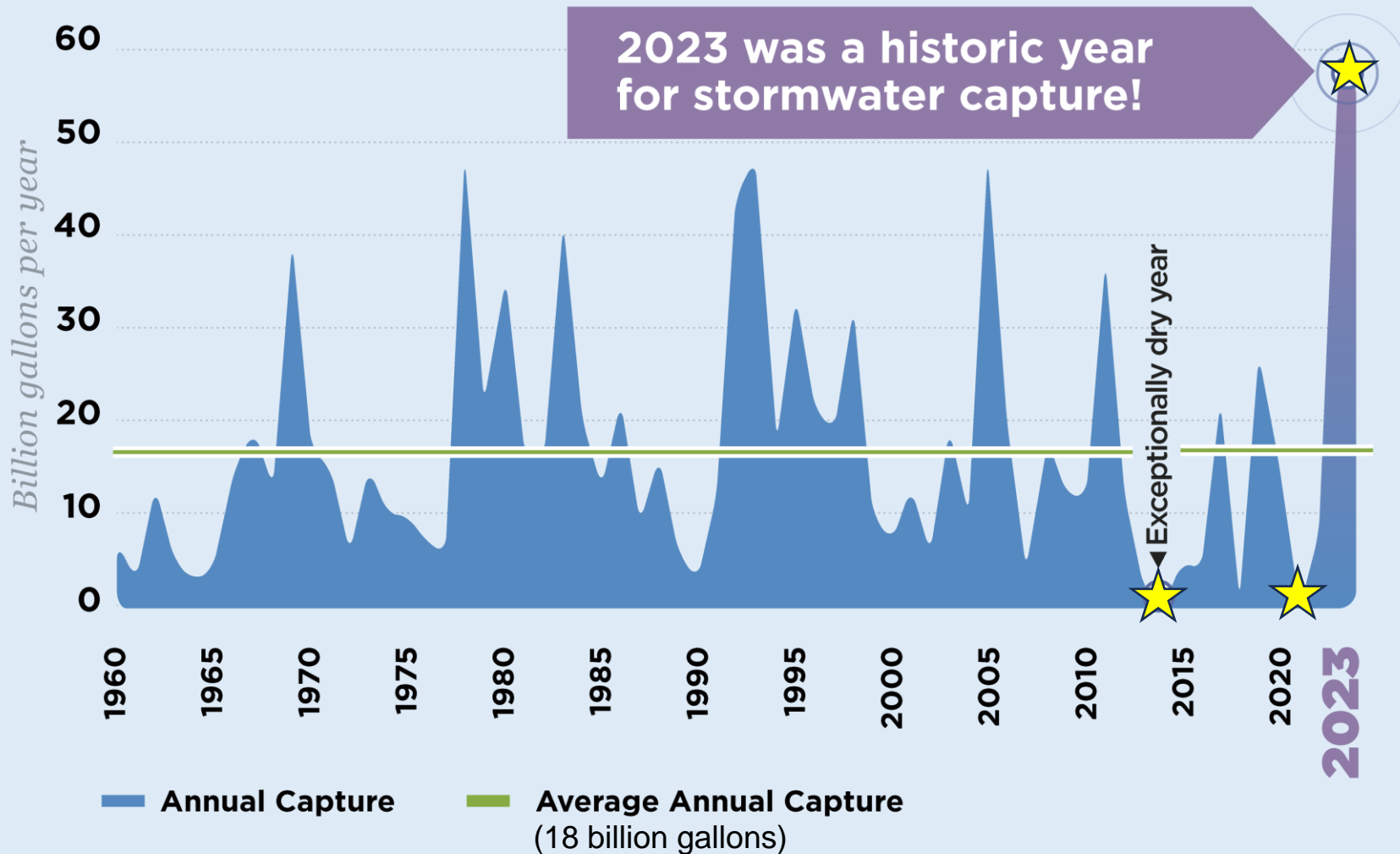


- Climate forecasts predict more rainfall than snowfall in the coming years
- Drought cycles are already frequent and more extreme



# Seasonal extremes have been experienced in the past decade

## ANNUAL STORMWATER CAPTURE IN THE WRD SERVICE AREA



- In the 2022-23 Water Year, the WRD service area captured nearly 60 billion gallons of stormwater
- In the 2013-14 and 2020-21 Water Years, the WRD service area captured ZERO gallons of stormwater
- That's why recycled water is so important to the region

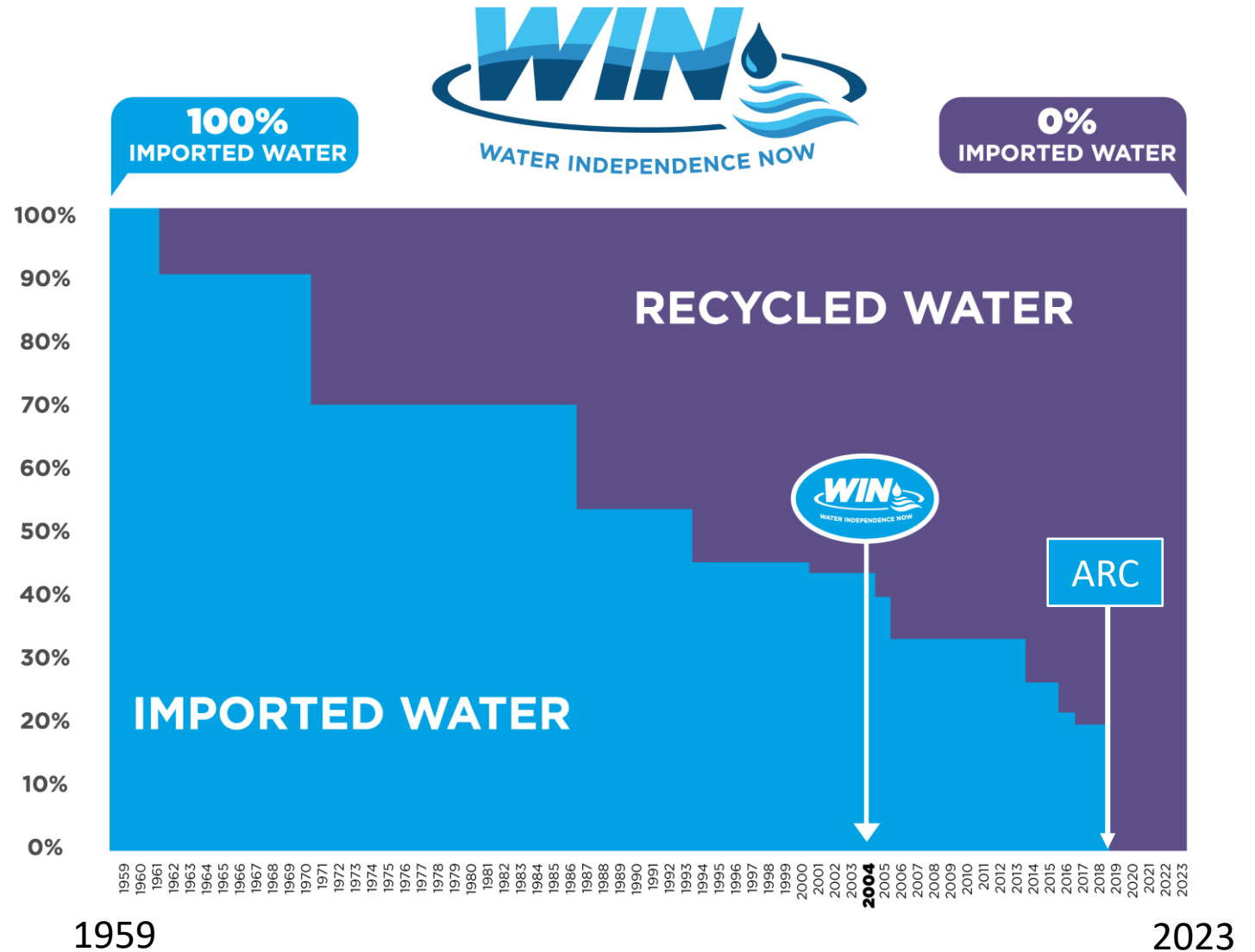


# ARC completed WRD's decade-long recycled water journey

*Albert Robles Center  
for Water Recycling &  
Environmental Learning*



WRD no longer needs  
to import water to  
replenish the Central  
Groundwater Basin

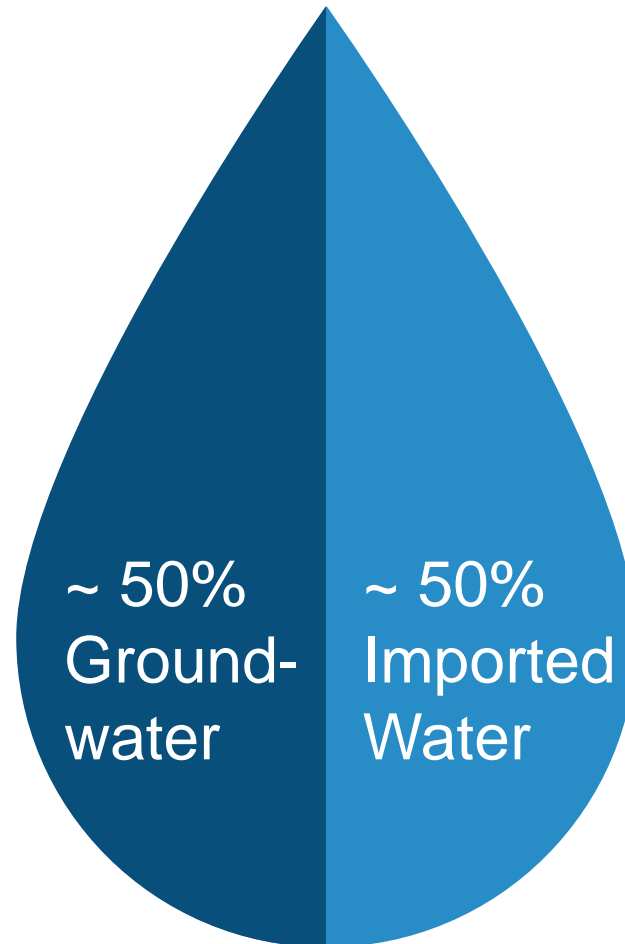




# Even with WIN complete, there's still more work to do in the basins



- The WIN Program was completed in 2019 and created a locally sustainable supply for replenishment using stormwater and recycled water



WATER SUPPLY FOR  
PROVIDERS IN THE WRD  
SERVICE AREA



- The WIN 4 ALL Program will address the remaining water supply issues within the WRD service area



# Lessons learned from WIN will be expanded into regional WIN 4 ALL

## WEST COAST BASIN



## CENTRAL BASIN

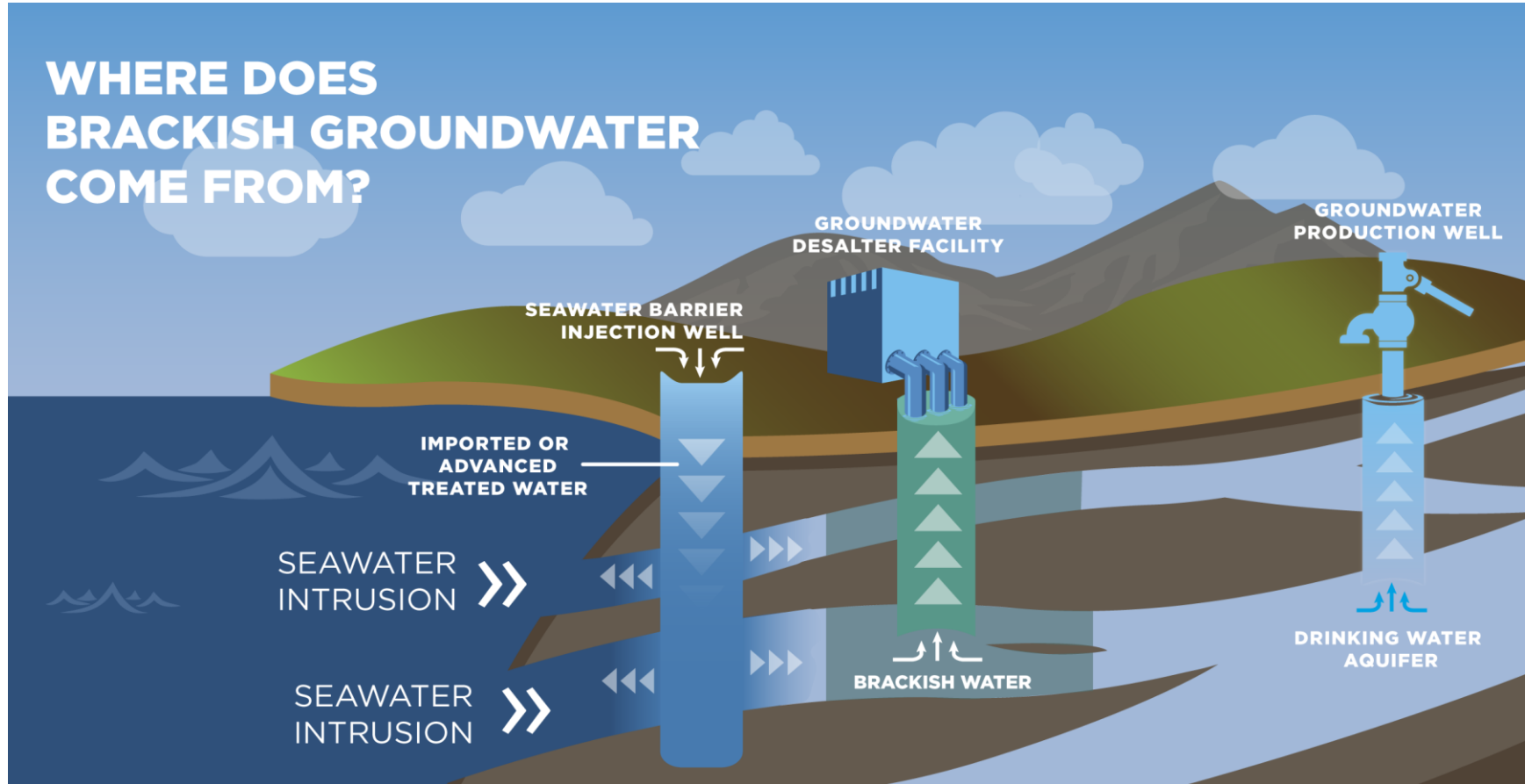


- The WIN Program created a locally sustainable supply for replenishment
- However, many groundwater pumpers don't use all their annual water rights
- There is also a lot of available groundwater storage space in the basins (450,000 AF total)
- The WRD WIN 4 ALL Program will address these issues



# The Brackish Groundwater Reclamation Program will clean up salty groundwater

## WHERE DOES BRACKISH GROUNDWATER COME FROM?



*Robert W. Goldsworthy*  
*Groundwater*  
*Desalter*



The Desalter in Torrance  
will be expanded for continued  
cleanup of salty groundwater  
from historical seawater intrusion



# The Desalter Expansion Project has multiple benefits

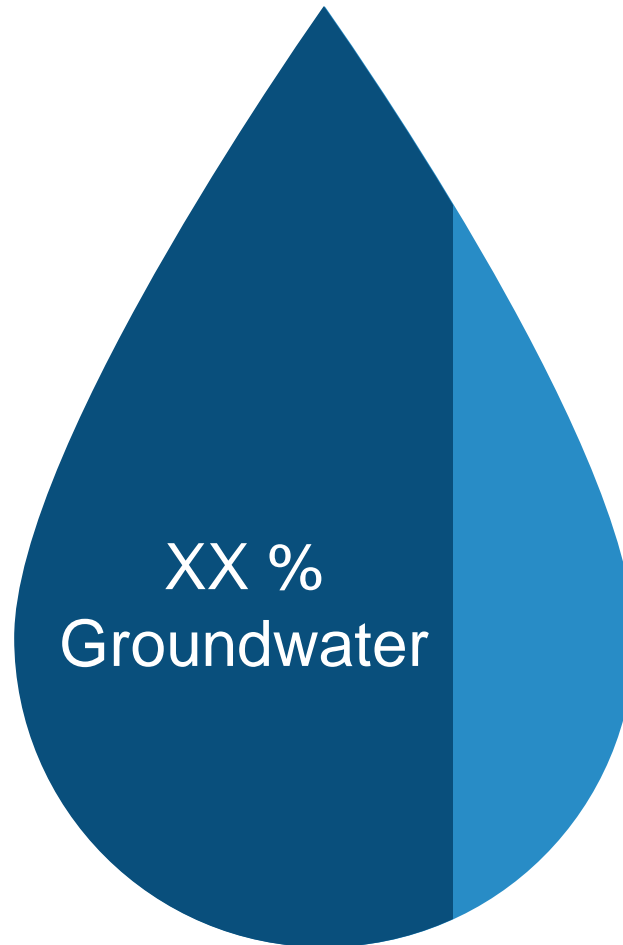


## *Desalter Expansion Project*



By cleaning up the salty groundwater, you create a new water supply, allow groundwater pumpers to use their water rights, and make room for more underground storage of freshwater supplies

# A secure and sustainable water future is within reach



WATER SUPPLY FOR  
PROVIDERS IN THE WRD  
SERVICE AREA



- With the completion of WIN 4 ALL, WRD hopes to see a region fully reliant on a groundwater supply that is replenished with sustainable local supplies of recycled water and stormwater





# THANK YOU

Stephan Tucker, General Manager  
**[stucker@wrd.org](mailto:stucker@wrd.org)**



@WRDsocal



4040 Paramount Blvd.  
Lakewood, CA 90712



[www.WRD.org](http://www.WRD.org)